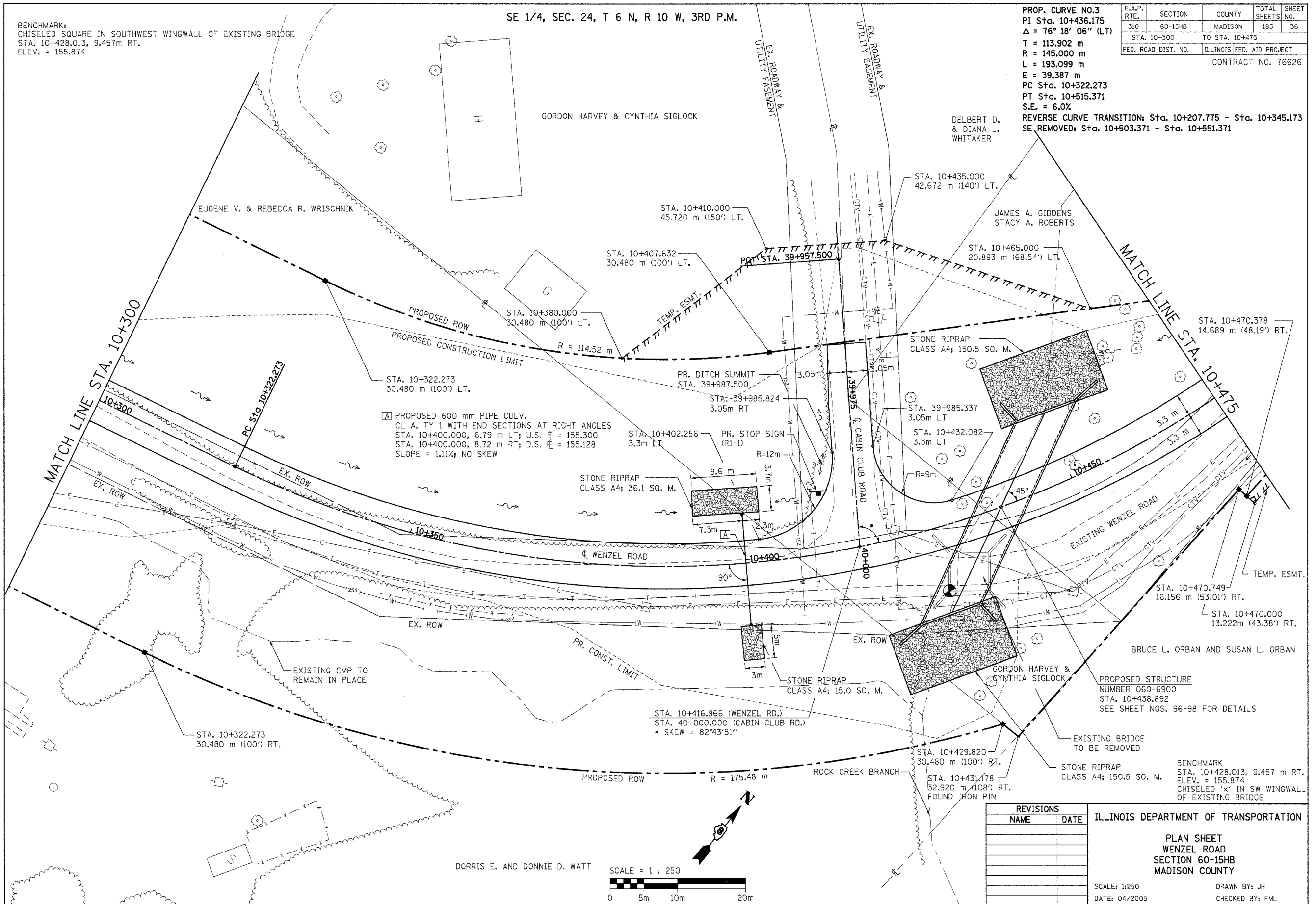


BENCHMARK:  
CHISELED SQUARE IN SOUTHWEST WINGWALL OF EXISTING BRIDGE  
STA. 10+428.013, 9.457m RT.  
ELEV. = 155.874

SE 1/4, SEC. 24, T 6 N, R 10 W, 3RD P.M.

F.A.P. RTE.	SECTION	COUNTY	TOTAL SHEETS	SHEET NO.
310	60-15HB	MADISON	185	36
STA. 10+300		TO STA. 10+475		
FED. ROAD DIST. NO.		ILLINOIS FED. AID PROJECT		
CONTRACT NO. 76626				

PROP. CURVE NO.3  
PI Sta. 10+436.175  
 $\Delta = 76^\circ 18' 06''$  (LT)  
T = 113.902 m  
R = 145.000 m  
L = 193.099 m  
E = 39.387 m  
PC Sta. 10+322.273  
PT Sta. 10+515.371  
S.E. = 6.0%  
REVERSE CURVE TRANSITION: Sta. 10+207.775 - Sta. 10+345.173  
SE. REMOVED: Sta. 10+503.371 - Sta. 10+551.371

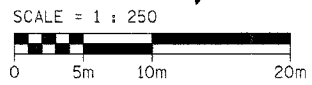


PROPOSED 600 mm PIPE CULV.  
CL A, TY 1 WITH END SECTIONS AT RIGHT ANGLES  
STA. 10+400.000, 6.79 m LT; U.S.  $\bar{H}$  = 155.300  
STA. 10+400.000, 8.72 m RT; D.S.  $\bar{H}$  = 155.128  
SLOPE = 1.11%; NO SKEW

PROPOSED STRUCTURE  
NUMBER 060-6900  
STA. 10+438.692  
SEE SHEET NOS. 96-98 FOR DETAILS

REVISIONS	
NAME	DATE

ILLINOIS DEPARTMENT OF TRANSPORTATION  
  
PLAN SHEET  
WENZEL ROAD  
SECTION 60-15HB  
MADISON COUNTY  
  
SCALE: 1:250  
DATE: 04/2005  
  
DRAWN BY: JH  
CHECKED BY: FML



PLAN SHEET - WENZEL ROAD - STA. 10+300 TO STA. 10+475