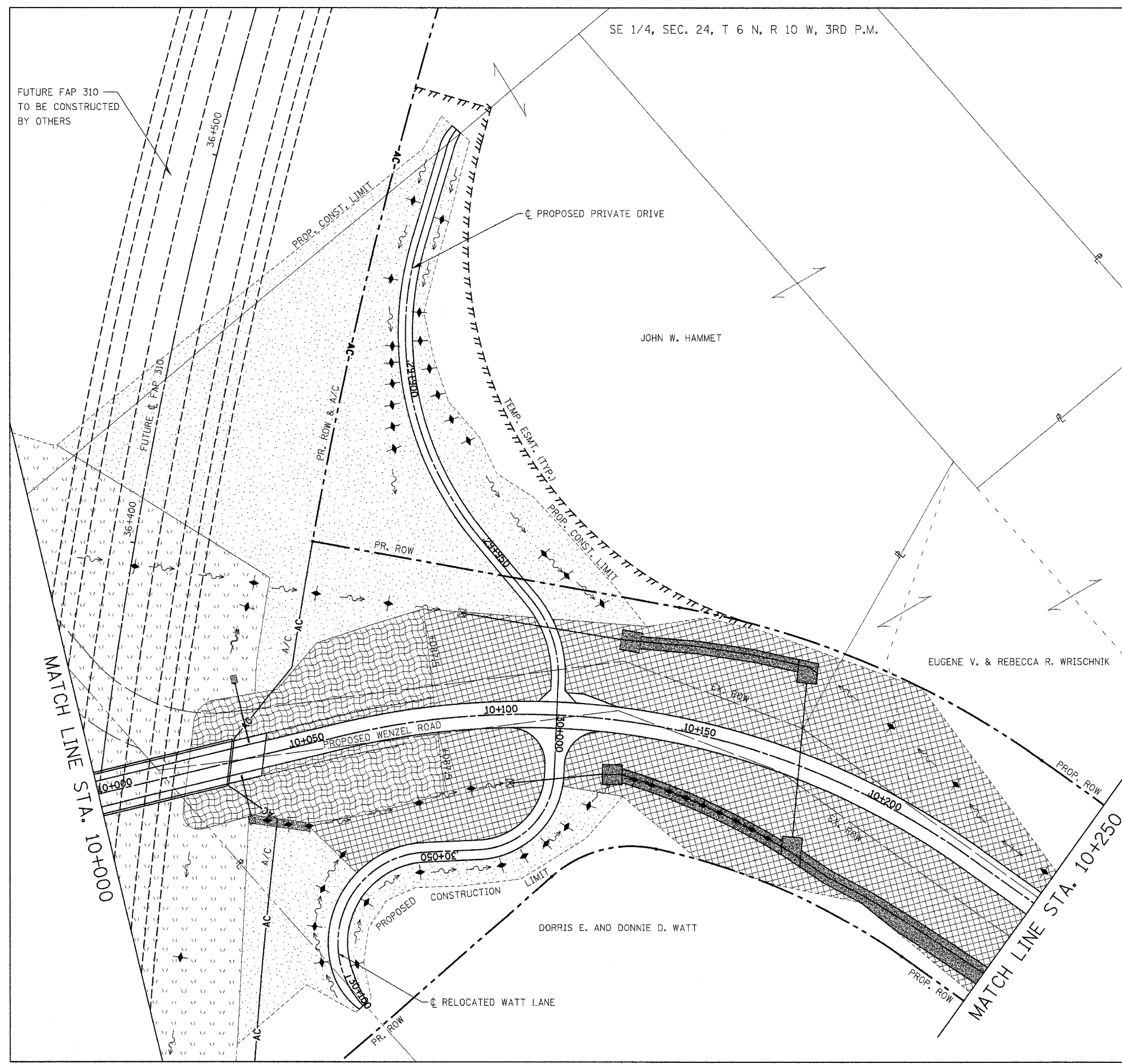


SE 1/4, SEC. 24, T 6 N, R 10 W, 3RD P.M.

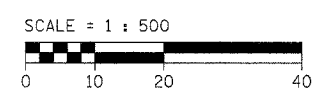
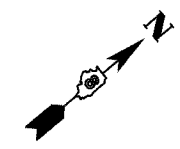
F.A.P. RTE.	SECTION	COUNTY	TOTAL SHEETS	SHEET NO.
310	60-15HB	MADISON	185	57
STA. 10+000		TO STA. 10+250		
FED. ROAD DIST. NO. -		ILLINOIS FED. AID PROJECT		
CONTRACT NO. 76626				

FUTURE FAP 310
TO BE CONSTRUCTED
BY OTHERS



LEGEND

- ◆ TEMPORARY DITCH CHECK
- ⊕ INLET & PIPE PROTECTION
- ▬ PERIMETER EROSION BARRIER
- ▨ RIPRAP
- ▩ EROSION CONTROL BLANKET WITH SEEDING, CLASS 3
- ▧ SEEDING, CLASS 2
- ▦ SEEDING, CLASS 3
- ▤ SEEDING, CLASS 7



REVISIONS	
NAME	DATE

ILLINOIS DEPARTMENT OF TRANSPORTATION
 STORM WATER POLLUTION PREVENTION PLAN
 WENZEL ROAD
 SECTION 60-15HB
 MADISON COUNTY
 SCALE = 1:500 DRAWN BY: IYL
 DATE: 04/2005 CHECKED BY: FML

STORM WATER POLLUTION PREVENTION PLAN - WENZEL ROAD - STA. 10+000 TO STA. 10+250