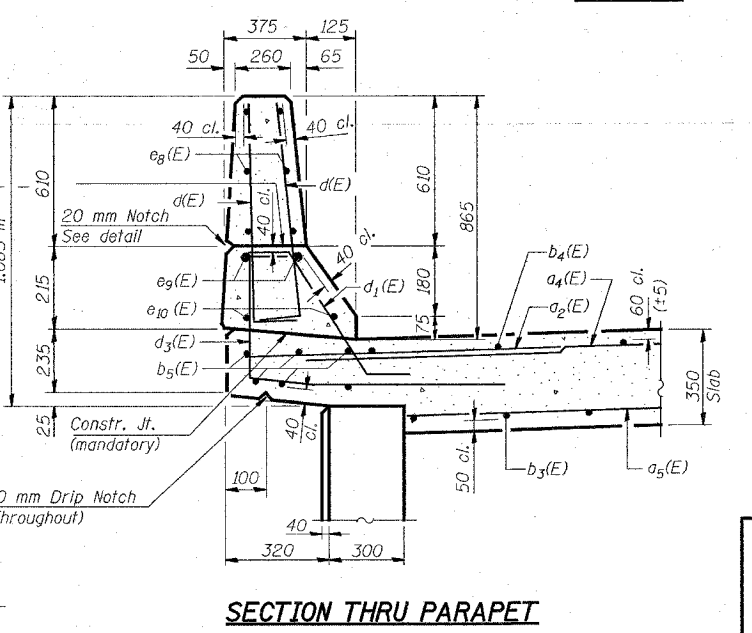


**BILL OF MATERIAL**

Bar	No.	Size	Length (m)	Shape
a2(E)	48	#20	1.50	—
a4(E)	15	#15	11.40	—
a5(E)	27	#15	10.50	—
b3(E)	50	#30	7.89	U
b4(E)	23	#15	7.09	—
b5(E)	12	#15	8.83	—
d(E)	126	#15	0.91	—
d1(E)	54	#15	0.73	—
d3(E)	48	#15	1.42	—
d4(E)	18	#15	0.87	—
d5(E)	6	#15	0.94	—
e8(E)	24	#15	4.40	—
e9(E)	4	#25	8.89	—
e10(E)	4	#15	8.89	—
x(E)	23	#15	1.28	—
Reinforcement Bars, Epoxy Coated			kg	4270
Concrete Superstructure			m <sup>3</sup>	34.5

Reinforcement bars designated (E) shall be epoxy coated.



**REVISIONS**

NO.	DESCRIPTION	DATE

ILLINOIS DEPARTMENT OF TRANSPORTATION  
**SOUTH APPROACH SPAN**  
**WENZEL ROAD OVER F.A.P. RTE 310**  
**SECTION 60-15HB**  
**MADISON COUNTY**  
**STA. 36+335.990 (FAP 310)**  
**STA. 10+000.000 (WENZEL ROAD)**  
**STRUCTURE NO. 060-0306**

**LIN ENGINEERING, LTD.**  
 20 N. Duane Street  
 Chicago, Illinois 60629  
 Tel: (312) 463-8888  
 Fax: (312) 463-1126  
 Designed By: WY Checked By: JSM (Drawn By: JMD)  
 Date: 02/93 File: 020306.DGN