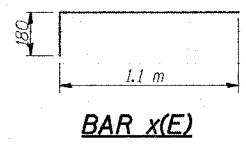


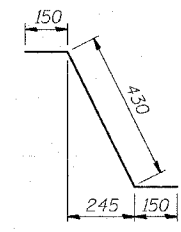
SECTION B-B
(at Rt. L's)

SECTION A-A
(at Rt. L's)

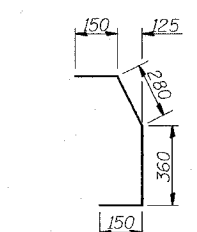
See Sheet #8 of 20 for Parapet Joint Details.



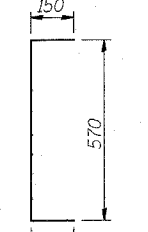
BAR x(E)



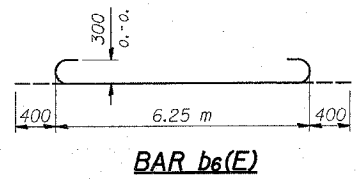
BAR d1(E)



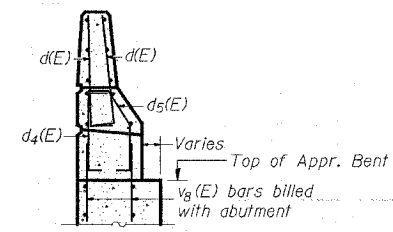
BAR d5(E)



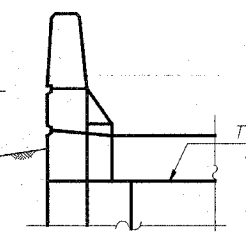
BAR d4(E)



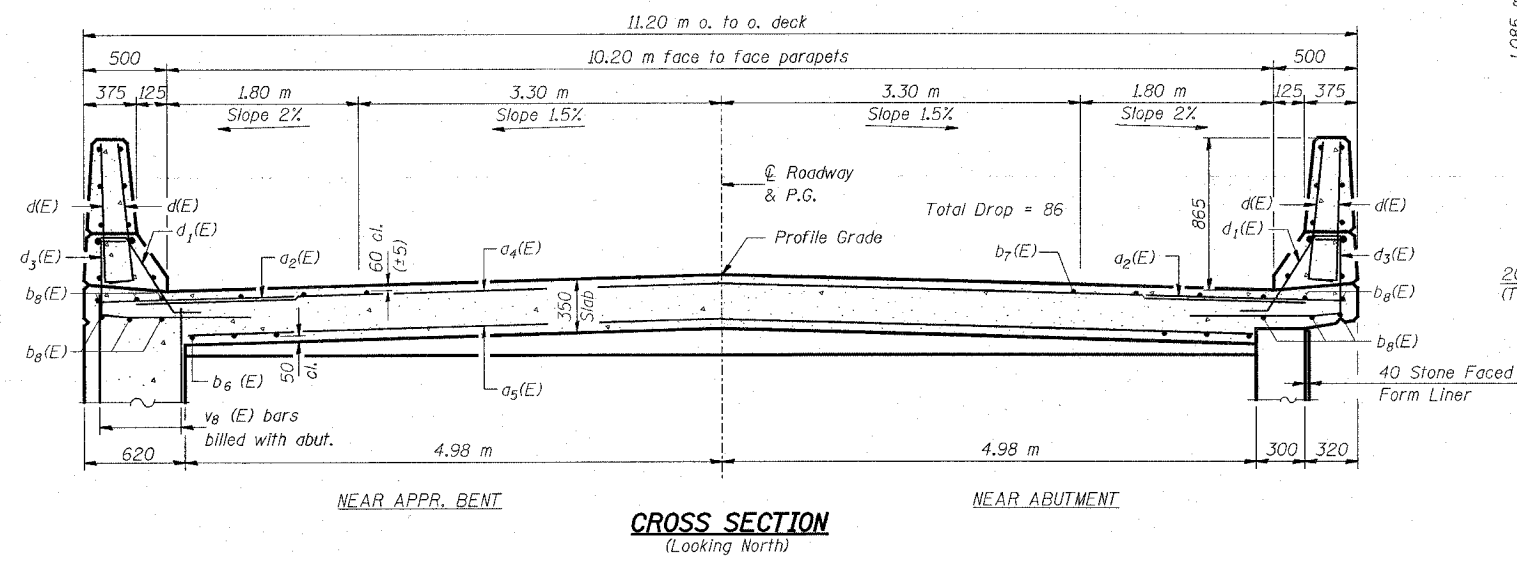
BAR b6(E)



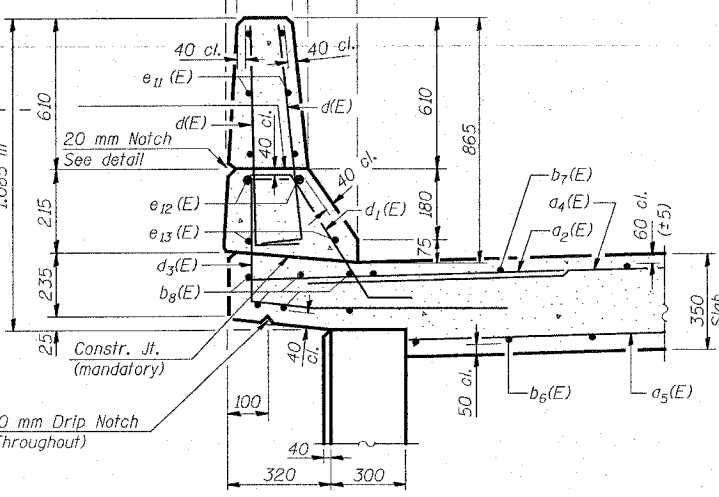
SECTION D-D



VIEW C-C



CROSS SECTION
(Looking North)



SECTION THRU PARAPET

BILL OF MATERIAL

Bar	No.	Size	Length (m)	Shape
a2(E)	42	#20	1.50	—
a4(E)	14	#15	11.40	—
a5(E)	24	#15	10.50	—
b6(E)	50	#30	7.05	—
b7(E)	23	#15	6.25	—
b8(E)	12	#15	7.99	—
d(E)	114	#15	0.91	—
d1(E)	48	#15	0.73	—
d3(E)	42	#15	1.42	—
d4(E)	18	#15	0.87	—
d5(E)	6	#15	0.94	—
e11(E)	24	#15	3.98	—
e12(E)	4	#25	8.05	—
e13(E)	4	#15	8.05	—
x(E)	23	#15	1.28	—
Reinforcement Bars, Epoxy Coated		kg	3830	
Concrete Superstructure		m ³	31.8	

Reinforcement bars designated (E) shall be epoxy coated.

ILLINOIS DEPARTMENT OF TRANSPORTATION
NORTH APPROACH SPAN
WENZEL ROAD OVER F.A.P. RTE 310
SECTION 60-15HB
MADISON COUNTY
STA. 36+335.990 (FAP 310)
STA. 10+000.000 (WENZEL ROAD)
STRUCTURE NO. 060-0306

LIN ENGINEERING, LTD.
 20 N. Dearborn
 Chicago, Illinois 60639
 (312) 432-4500
 Fax (312) 432-4700
 Designed By: WX
 Checked By: PDL
 Drawn By: JMD
 Date: 02/03
 File: 060306.DWG

REVISIONS
NAME