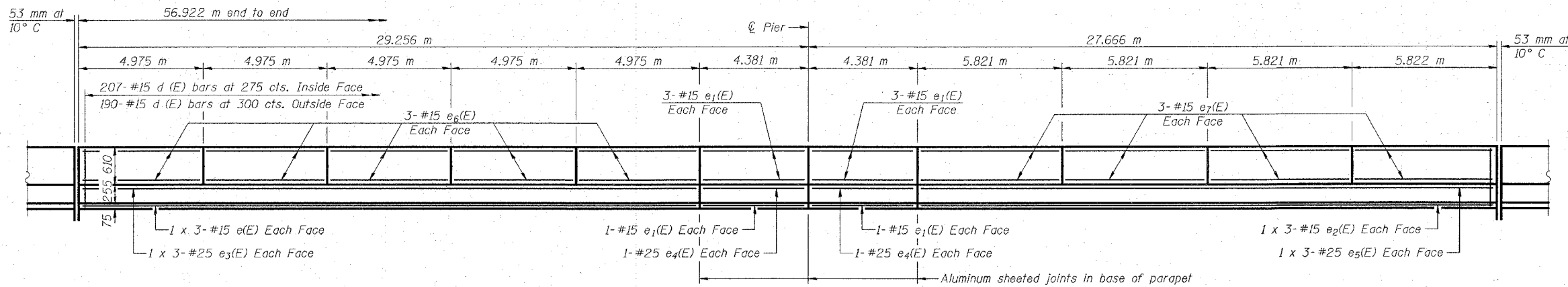


ROUTE NO.	SECTION	COUNTY	TOTAL SHEETS	SHEET NO.	SHEET NO. 8 20 SHEETS
F.A.P. 310	60-15HB	MADISON	185	83	
FED. ROAD DIST. NO.	ILLINOIS	FED. AID PROJECT	CONTRACT NO. T6626		



**INSIDE ELEVATION OF PARAPET**  
(West Side Shown, East Side Opposite Hand)

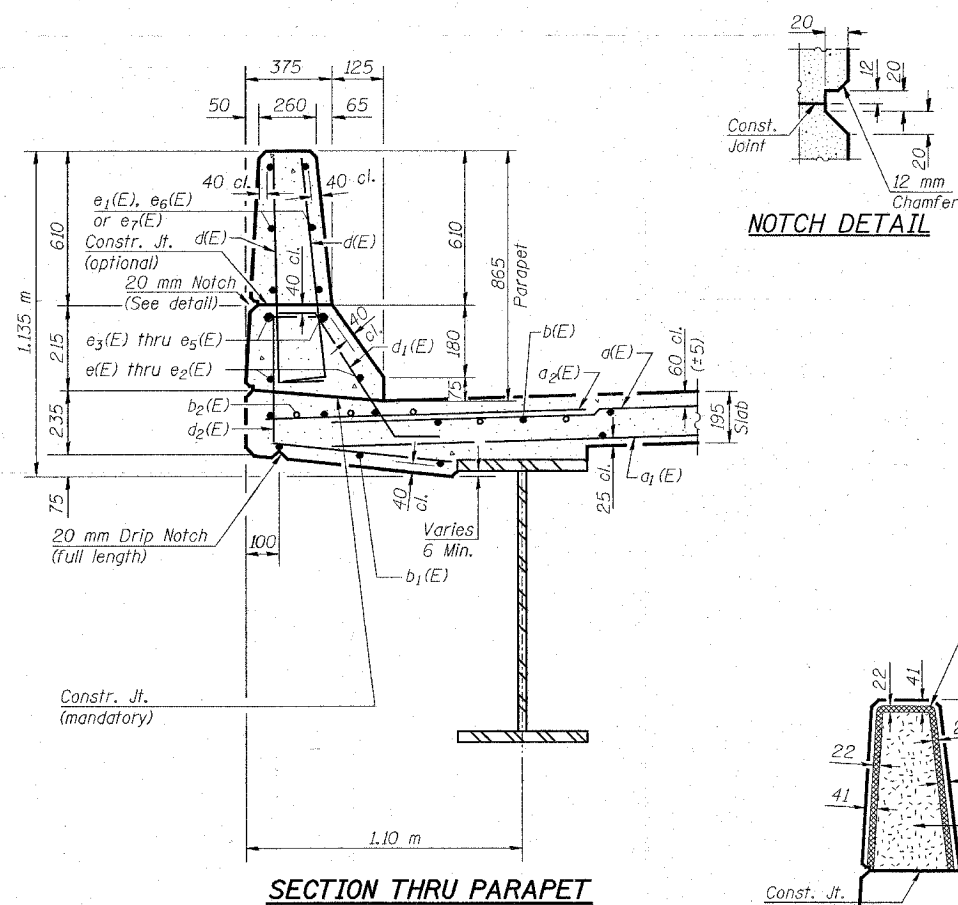
**SUPERSTRUCTURE  
BILL OF MATERIAL**

Bar	No.	Size	Length (m)	Shape
d(E)	284	#15	11.00	—
a <sub>1</sub> (E)	227	#15	10.60	—
a <sub>2</sub> (E)	568	#20	1.50	—
a <sub>3</sub> (E)	8	#15	5.70	—
b(E)	240	#15	10.00	—
b <sub>1</sub> (E)	217	#15	8.67	—
b <sub>2</sub> (E)	117	#20	6.50	—
d(E)	794	#15	0.91	—
d <sub>1</sub> (E)	414	#15	0.73	—
d <sub>2</sub> (E)	380	#15	1.28	—
e(E)	12	#15	8.72	—
e <sub>1</sub> (E)	32	#15	4.28	—
e <sub>2</sub> (E)	12	#15	8.19	—
e <sub>3</sub> (E)	12	#25	9.14	—
e <sub>4</sub> (E)	8	#25	4.28	—
e <sub>5</sub> (E)	12	#25	8.61	—
e <sub>6</sub> (E)	60	#15	4.87	—
e <sub>7</sub> (E)	48	#15	5.72	—
x(E)	68	#15	1.28	—
Reinforcement Bars Epoxy Coated		kg	24180	
Concrete Superstructure		m <sup>3</sup>	163.4	

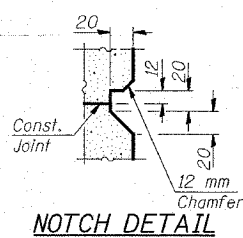
Reinforcement bars designated (E) shall be epoxy coated.

Bars indicated thus 1 x 3-#25 etc. indicates 1 line of bars with 3 lengths per line.

ILLINOIS DEPARTMENT OF TRANSPORTATION  
**SUPERSTRUCTURE DETAILS**  
WENZEL ROAD OVER F.A.P. RTE. 310  
SECTION 60-15HB  
MADISON COUNTY  
STA. 36+335.990 (FAP 310)  
STA. 10+000.000 (WENZEL ROAD)  
STRUCTURE NO. 060-0306

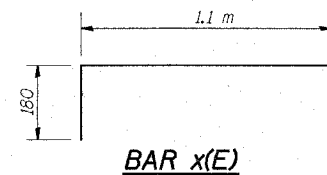


**SECTION THRU PARAPET**

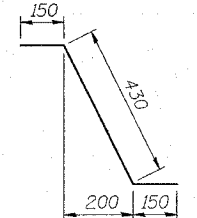


**NOTCH DETAIL**

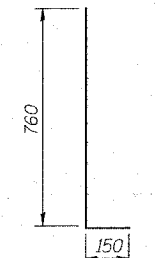
**MIN. LAP**  
#15 bars 640  
#25 bars 1.32 m



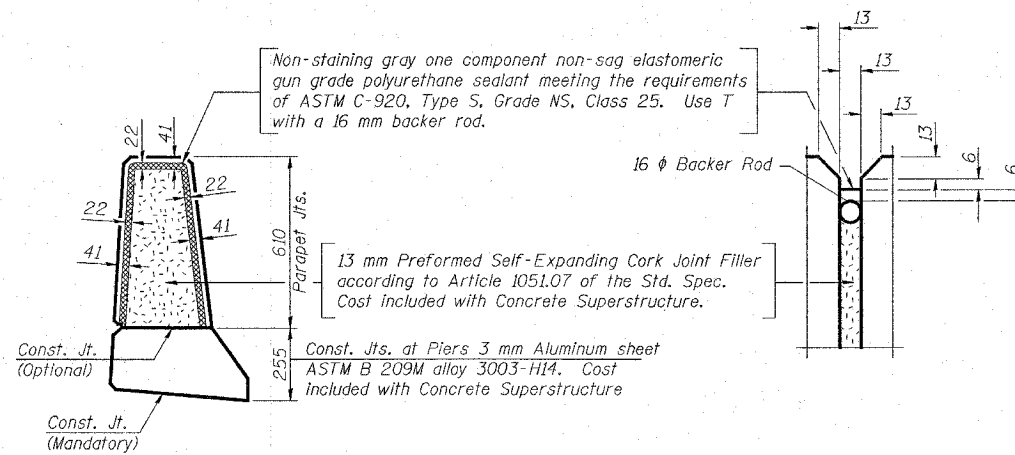
**BAR x(E)**



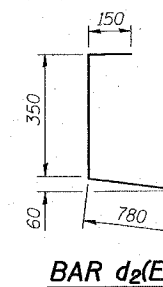
**BAR d<sub>1</sub>(E)**



**BAR d(E)**



**PARAPET JOINT DETAILS**



**BAR d<sub>2</sub>(E)**

**LIN ENGINEERING, LTD.**

210 N. CHERRY ST. CHATTANOOGA, TN 37403  
TEL: 423-483-4868 FAX: 423-483-4106  
Designed By: WY Checked By: PBL Drawn By: JMD  
Date: 02/03 File: 0600306.dwg

REVISIONS	
NO.	NAME