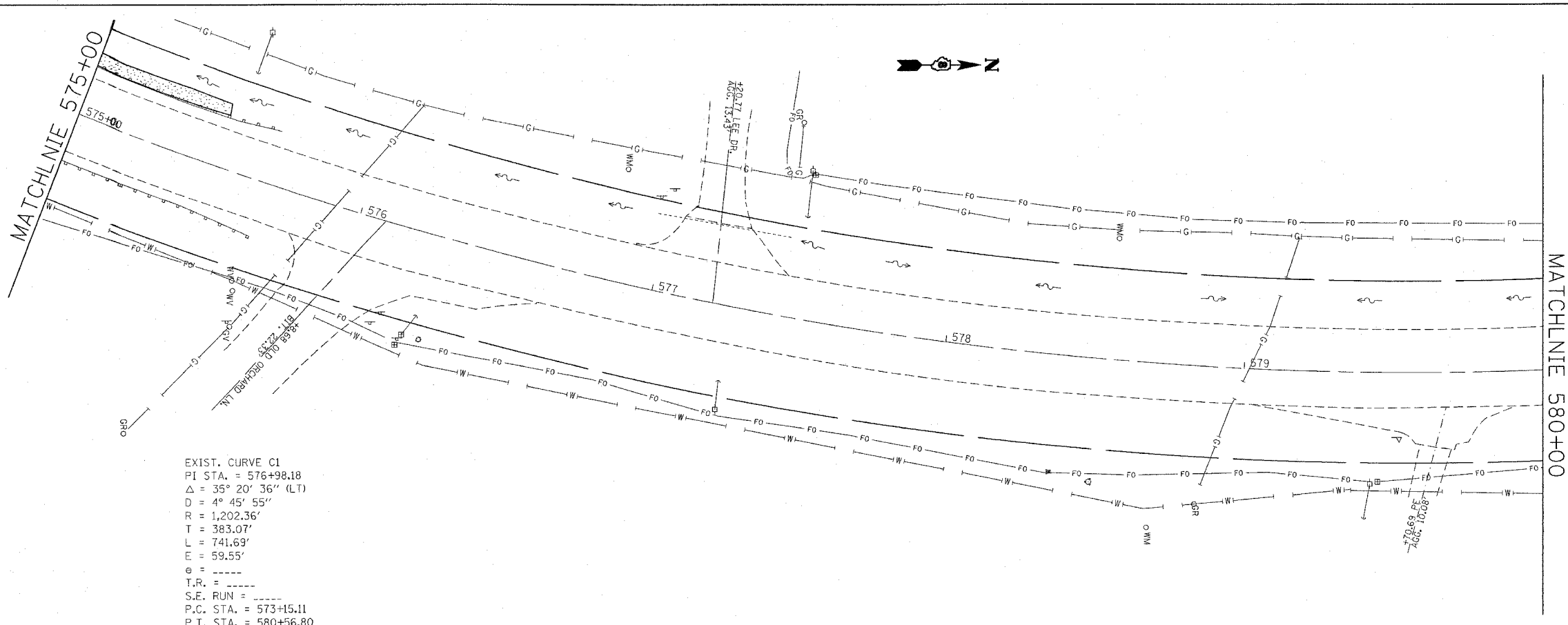


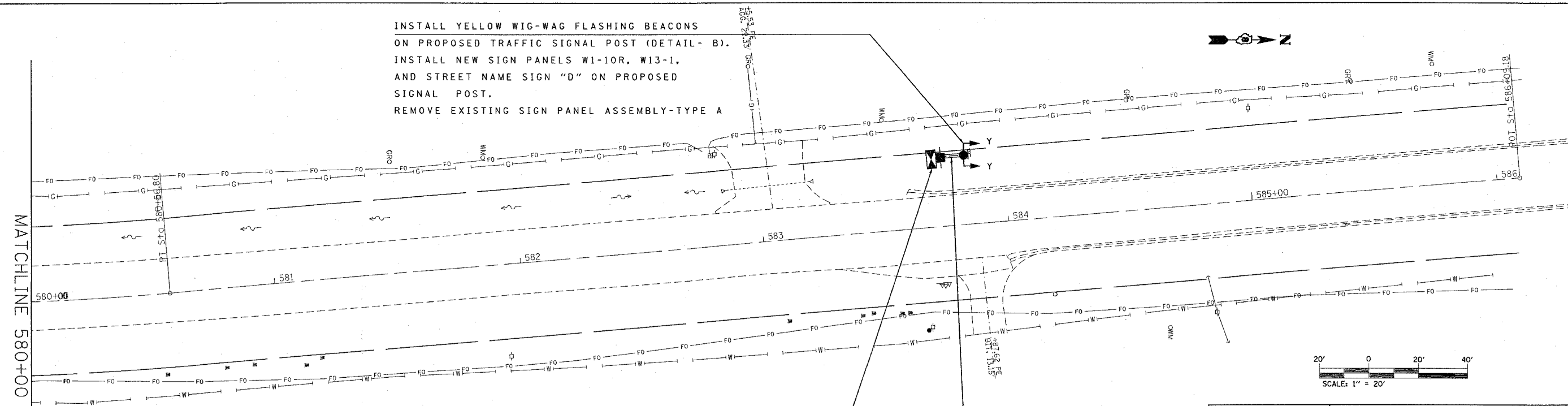
F.A. RTE.	SECTION	COUNTY	TOTAL SHEETS	SHEET NO.
*	**	***	14	5
STA.		TO STA.		
FED. ROAD DIST. NO.	ILLINOIS	FED. AID PROJECT		

- * FAP 829 / 785 / 312
- ** DIST. 8 FLASHING BEACONS 2008-1
- *** MONROE & MADISON



EXIST. CURVE C1
 PI STA. = 576+98.18
 $\Delta = 35^\circ 20' 36''$ (LT)
 $D = 4^\circ 45' 55''$
 $R = 1,202.36'$
 $T = 383.07'$
 $L = 741.69'$
 $E = 59.55'$
 $e = \text{-----}$
 $T.R. = \text{-----}$
 $S.E. \text{ RUN} = \text{-----}$
 $P.C. \text{ STA.} = 573+15.11$
 $P.T. \text{ STA.} = 580+56.80$

INSTALL YELLOW WIG-WAG FLASHING BEACONS ON PROPOSED TRAFFIC SIGNAL POST (DETAIL- B).
 INSTALL NEW SIGN PANELS W1-10R, W13-1, AND STREET NAME SIGN "D" ON PROPOSED SIGNAL POST.
 REMOVE EXISTING SIGN PANEL ASSEMBLY-TYPE A



PROPOSED SERVICE INSTALLATION, TYPE-A AND FLASHER CONTROLLER (DETAIL- A)
 1 1/2" GSC-ATS-8'

1 1/2" PVCC-T-10'

REVISIONS	
NAME	DATE

ILLINOIS DEPARTMENT OF TRANSPORTATION
PLAN VIEW - IL 156
 FAP ROUTE 829 / 785 / 312
 SECTION DIST. 8 FLASHING BEACONS 2008-1
 COUNTY MONROE & MADISON
 SCALE: VERT. _____
 DATE _____ HORIZ. _____
 DRAWN BY _____
 CHECKED BY _____

PLT DATE = *DATE*
 PLOT NAME = *NAME*
 PLOT SCALE = *SCALE*
 REFERENCE = *REF*