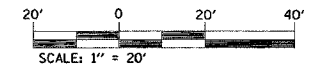
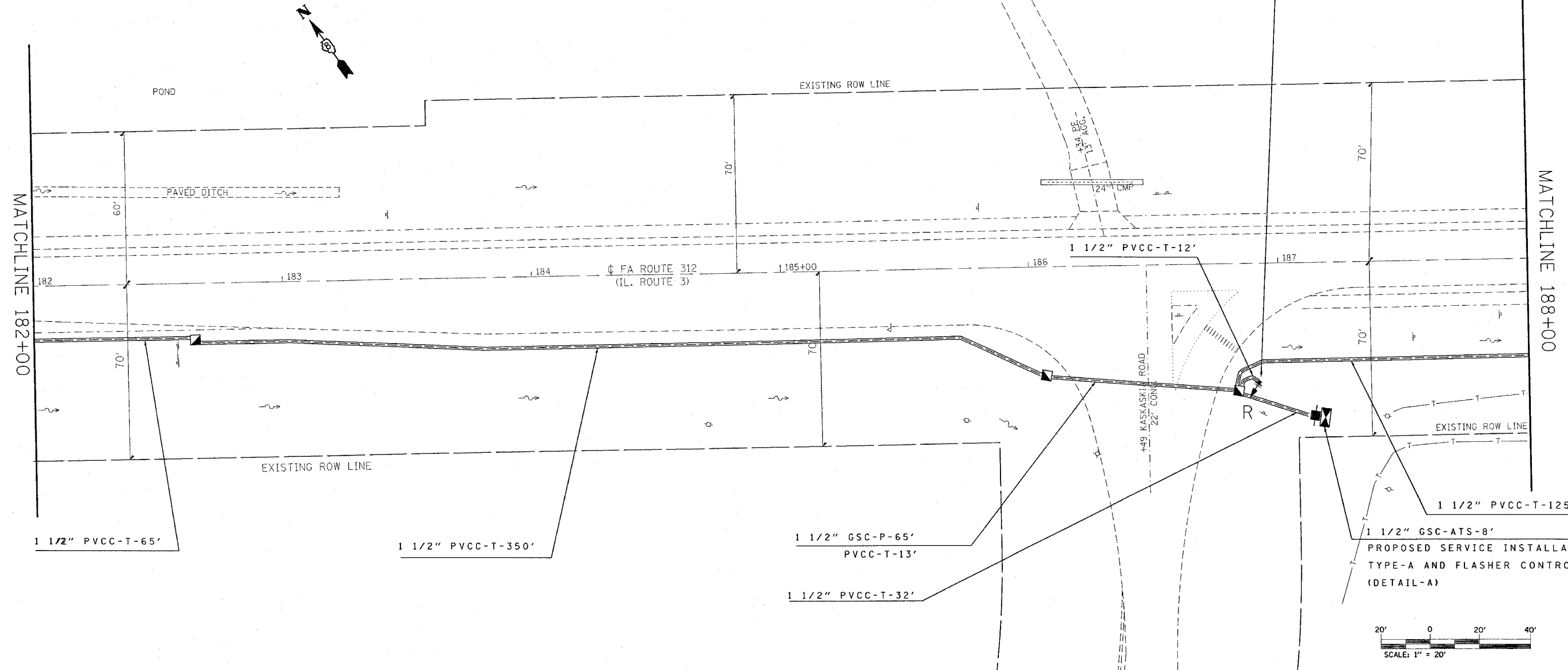


F.A. RTE.	SECTION	COUNTY	TOTAL SHEETS	SHEET NO.
*	**	***	14	10
STA.		TO STA.		
FED. ROAD DIST. NO.	ILLINOIS	FED. AID PROJECT		

- * FAP 829 / 785 / 312
- ** DIST. 8 FLASHING BEACONS 2008-1
- *** MONROE & MADISON

1 1/2" GSC-ATS-14'
 INSTALL RED FLASHING BEACON ON PROPOSED WOOD SIGN POST (DETAIL- C).
 INSTALL NEW SIGN PANEL R1-1 ON PROPOSED SIGN POST.
 REMOVE EXISTING SIGN PANEL ASSEMBLY- TYPE A



BM* 38 - RR SPIKE IN P.P. OF S.W. CORNER OF
 IL 3 AND KASKASKIA RD. STA. 187+47, 62' RT.; ELEV. 651.99

REVISIONS	
NAME	DATE

ILLINOIS DEPARTMENT OF TRANSPORTATION
PLAN VIEW - IL 3
 FAP ROUTE 829 / 785 / 312
 SECTION DIST. 8 FLASHING BEACONS 2008-1
 COUNTY MONROE & MADISON

SCALE: VERT. _____
 HORIZ. _____
 DATE _____ DRAWN BY _____
 CHECKED BY _____

PLOT DATE = #DATE#
 FILE NAME = #FILE#
 SHEET NO. = #SHEET#
 REFERENCE = #REF#