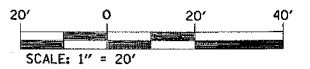
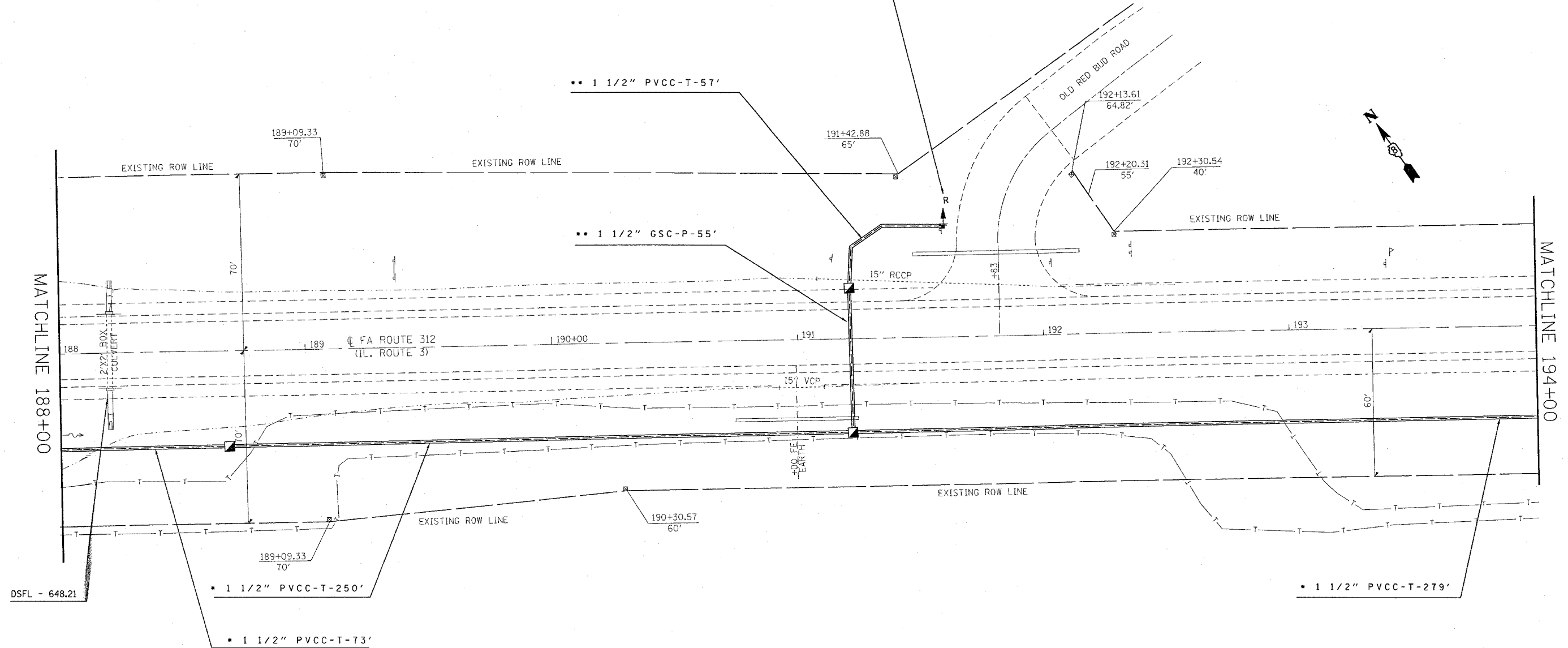


F.A. RTE.	SECTION	COUNTY	TOTAL SHEETS	SHEET NO.
*	**	***	14	11
STA.		TO STA.		
FED. ROAD DIST. NO.	ILLINOIS	FED. AID PROJECT		

- * FAP 829 / 785 / 312
- ** DIST. 8 FLASHING BEACONS 2008-1
- *** MONROE & MADISON

1 1/2" GSC-ATS-14'
 INSTALL RED FLASHING BEACON ON PROPOSED WOOD SIGN POST (DETAIL- C).
 INSTALL NEW SIGN PANEL R1-1 ON PROPOSED SIGN POST.
 REMOVE EXISTING SIGN PANEL ASSEMBLY-TYPE A



- * INSTALL CONDUITS ON BACK SLOPE OF THE DITCH.
- ** BOTTOM OF DITCH ELEVATION FROM MICROFILM IS 649.27. WHILE CROSSING THE DITCH, INSTALL CONDUITS 24" BELOW THE ABOVE ELEVATION OR EXISTING DITCH FLOW LINE ELEVATION, WHICHEVER IS LESS.

REVISIONS	
NAME	DATE

ILLINOIS DEPARTMENT OF TRANSPORTATION
PLAN VIEW - IL 3
 FAP ROUTE 829 / 785 / 312
 SECTION DIST. 8 FLASHING BEACONS 2008-1
 COUNTY MONROE & MADISON

SCALE: VERT. _____
 HORIZ. _____
 DATE _____ DRAWN BY _____
 CHECKED BY _____

PLOT DATE = #DAYS
 FILE NAME = #FILE#
 PLOT SCALE = #SCALE#
 REFERENCE = #REF#