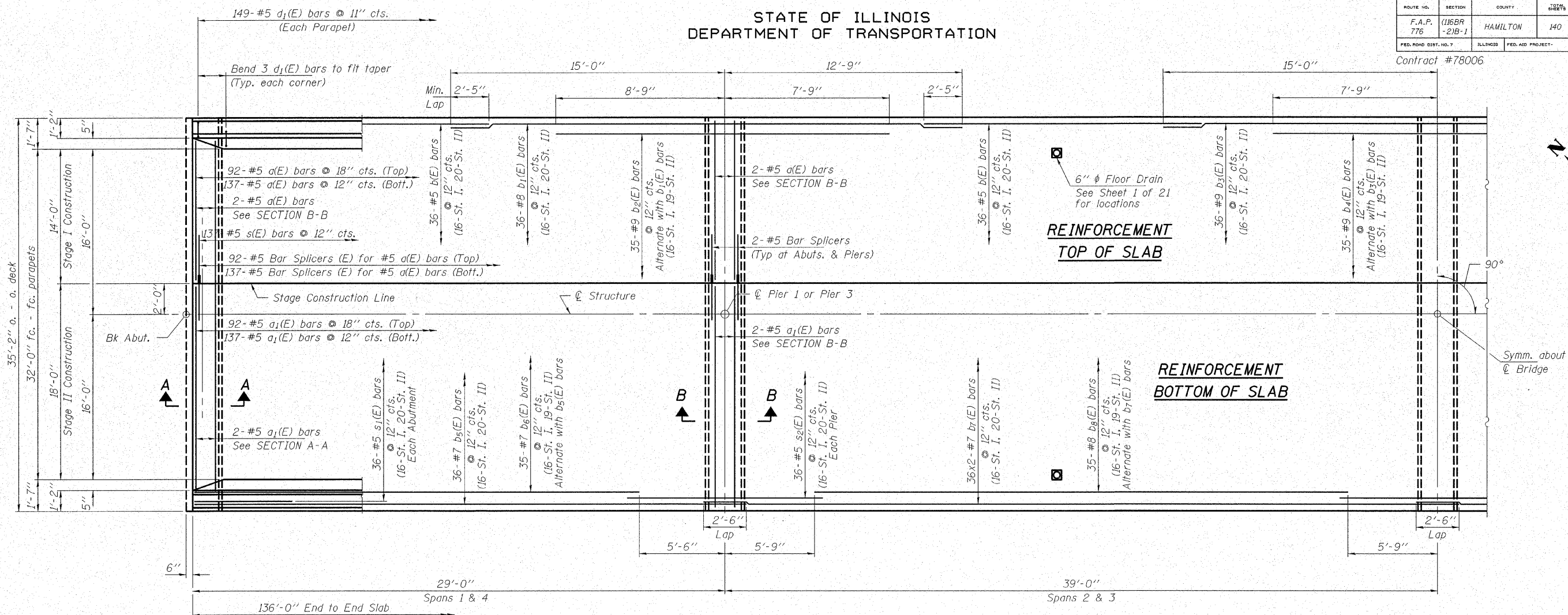


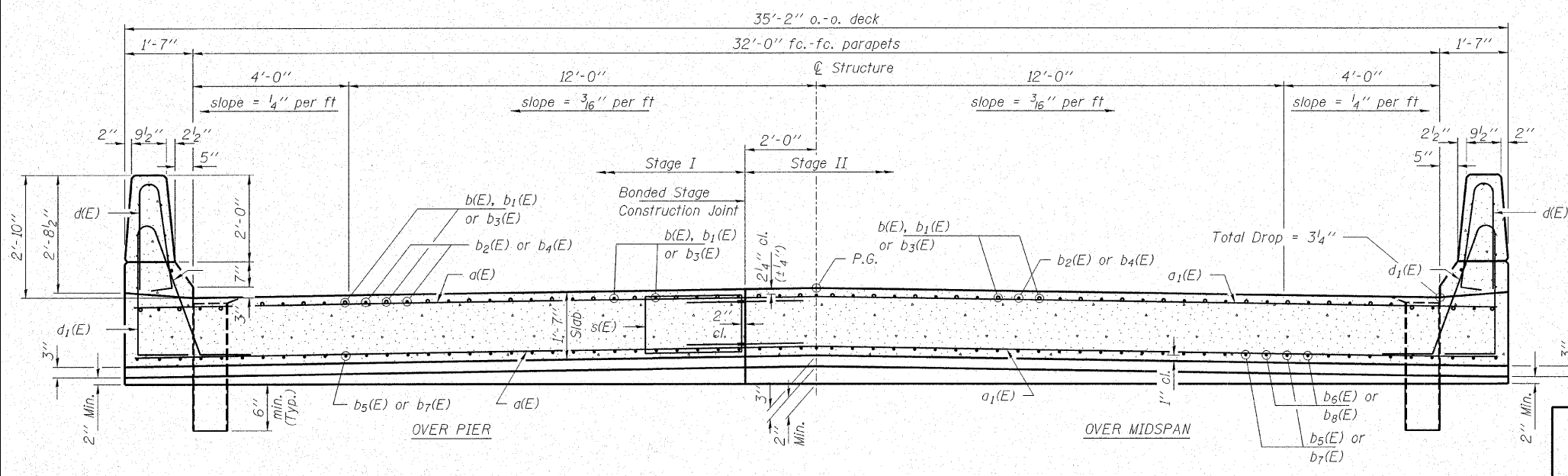
STATE OF ILLINOIS
DEPARTMENT OF TRANSPORTATION

ROUTE NO. F.A.P. 776	SECTION (116BR -2)B-1	COUNTY HAMILTON	TOTAL SHEETS 140	SHEET 53	SHEET NO. 9 21 SHEETS
FED. ROAD DIST. NO. 7		ILLINOIS	FED. AID PROJECT		

Contract #78006



HALF PLAN



CROSS SECTION
(Looking South)

Notes:
See Sheet 10 of 21 for superstructure details and Bill of Material.
Bars indicated thus 20 x 3-#5 etc. indicates 20 lines of bars with 3 lengths per line.
See Sheet 10 of 21 for parapet reinforcement.
See Sheet 10 of 21 for SECTION A-A & B-B.

MIN. BAR LAP
#7 = 2'-9"

PLOT DATE: 10/26/2007 FILE NAME: 0330051-78006-41021br.dgn

<p>HAMPTON, LENZINI & RENWICK, INC. CIVIL & STRUCTURAL ENGINEERS LAND SURVEYORS</p> <p>3085 STEVENSON DRIVE, SUITE 201 SPRINGFIELD, ILLINOIS 62703 (217) 546-3400</p> <p>ELGIN • SPRINGFIELD</p>	<p>SUPERSTRUCTURE</p> <p>IL RTE. 142 OVER CONTRARY CREEK (NORTH OVERFLOW)</p> <p>F.A.P. ROUTE 776 - SECTION (116BR-2)B-1</p> <p>HAMILTON COUNTY</p> <p>STRUCTURE NO. 033-0051 / STATION 539+14.20</p>