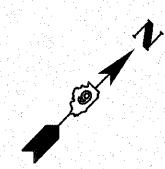
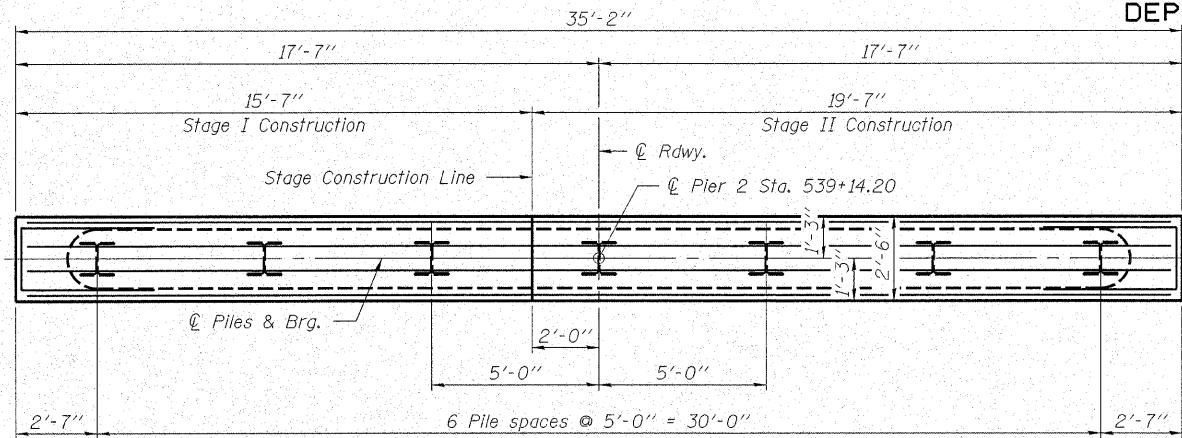


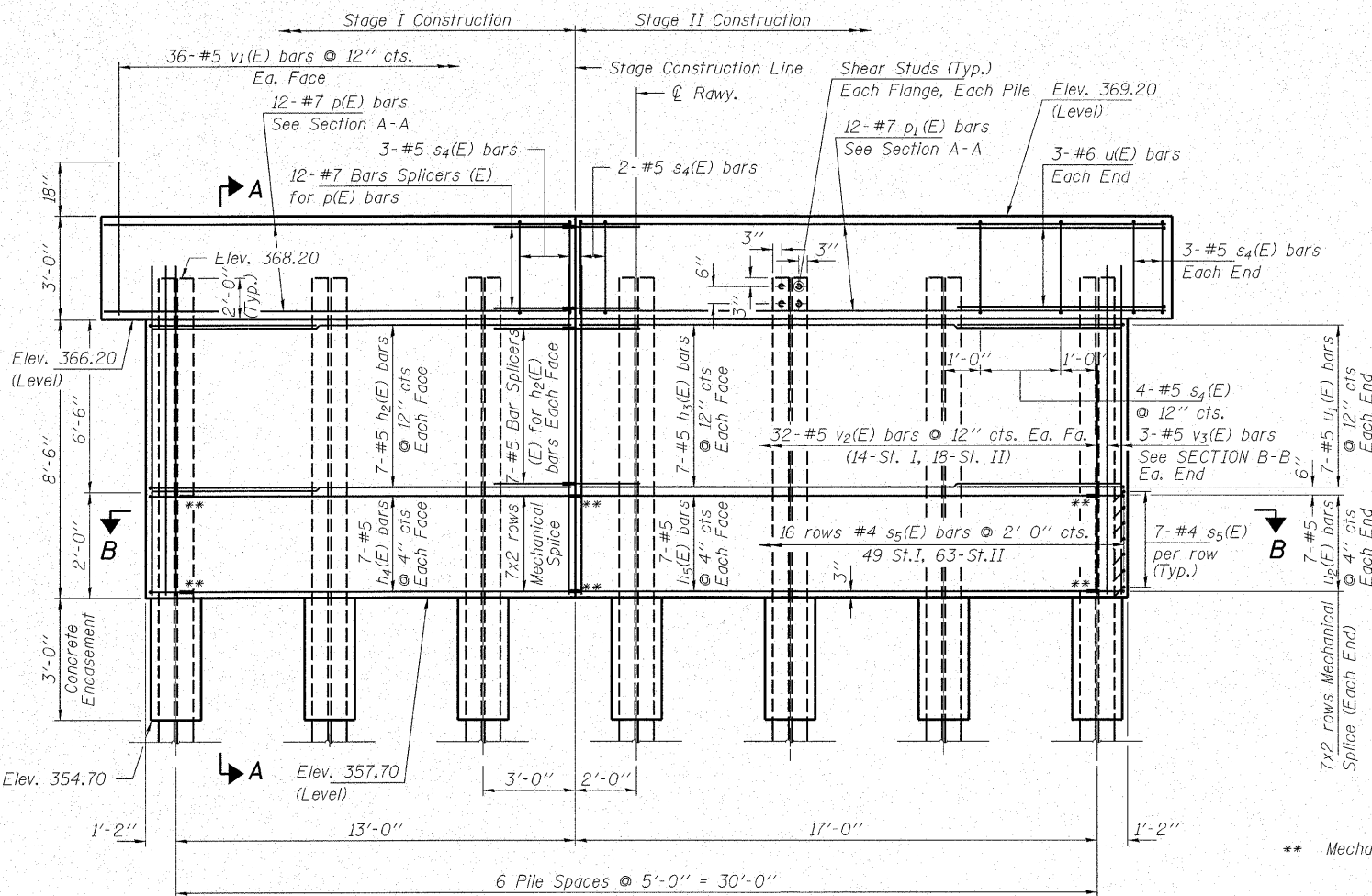
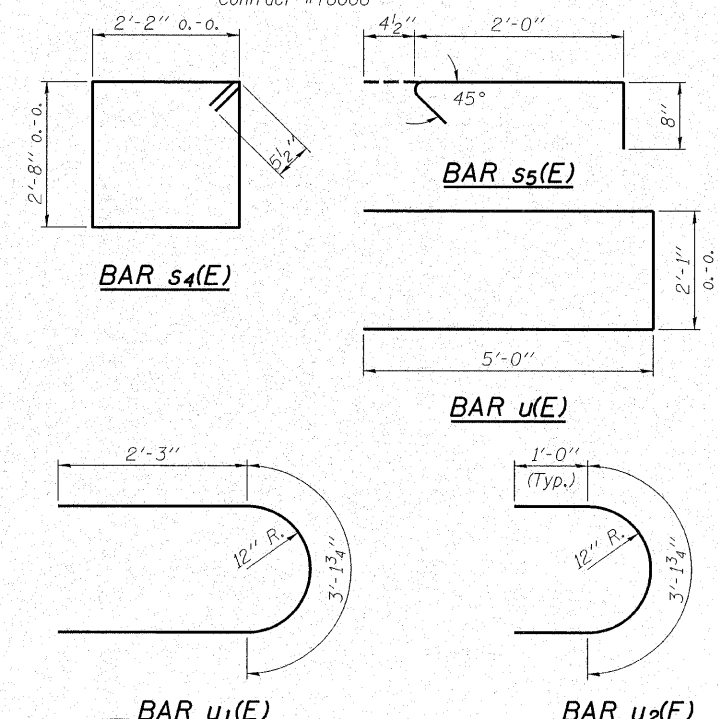
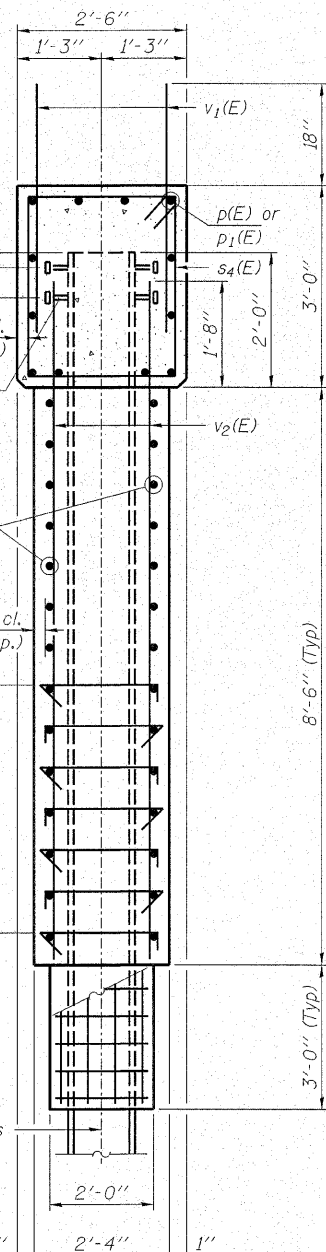
STATE OF ILLINOIS  
DEPARTMENT OF TRANSPORTATION

ROUTE NO.	SECTION	COUNTY	TOTAL SHEETS	SHEET NO.	SHEET NO. 14 21 SHEETS
F.A.P. 776	(116BR-2)B-1	HAMILTON	140	58	
FED. ROAD DIST. NO. 7		ILLINOIS	FED. AID PROJECT-		

Contract #78006



4-3/4" φ x 4" long (Min.)  
Granular or solid flux filled headed studs automatically end welded (Typ. Ea. flange, Ea. Pile)



\*\* Mechanical splice

PILE DATA

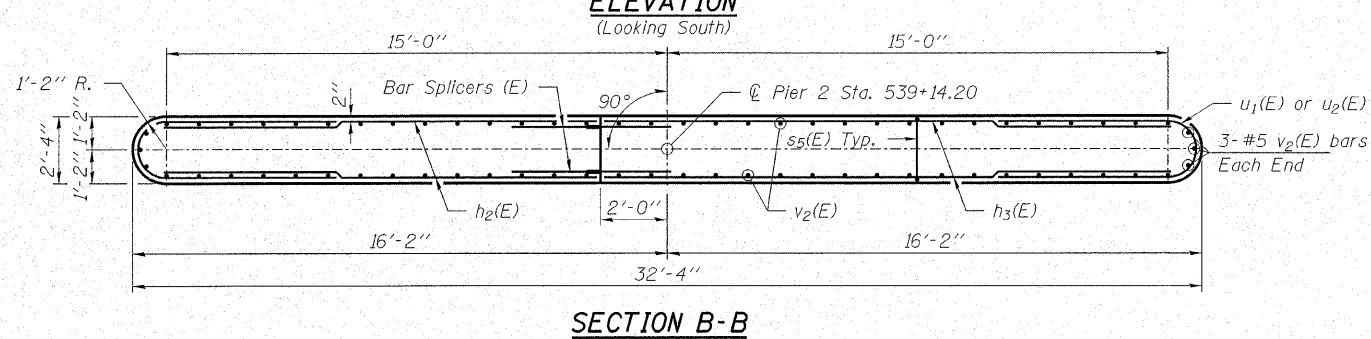
Type and Size \_\_\_\_\_ Steel HP10x57  
No. Req'd \_\_\_\_\_ 7  
Nominal Req'd Bearing \_\_\_\_\_ 453 Kips/Pile  
Allowable Resistance Available \_\_\_\_\_ 151 Kips/Pile  
Est. Lengths \_\_\_\_\_ 70 Ft/Pile

Notes: The Steel H-Piles shall be according to AASHTO M270 Grade 50.

BILL OF MATERIAL - PIER 1

BAR	NO.	SIZE	LENGTH	SHAPE
h <sub>2</sub> (E)	14	#5	12'-10"	—
h <sub>3</sub> (E)	14	#5	16'-10"	—
h <sub>4</sub> (E)	14	#5	11'-10"	—
h <sub>5</sub> (E)	14	#5	15'-10"	—
p(E)	12	#7	15'-3"	—
p <sub>1</sub> (E)	12	#7	19'-3"	—
s <sub>4</sub> (E)	31	#5	10'-7"	□
s <sub>5</sub> (E)	112	#4	3'-1"	┌┐
u(E)	6	#6	12'-1"	U
u <sub>1</sub> (E)	14	#5	7'-8"	U
u <sub>2</sub> (E)	14	#5	5'-2"	U
v <sub>1</sub> (E)	72	#5	4'-0"	—
v <sub>2</sub> (E)	70	#5	10'-3"	—
Structure Excavation			Cu. Yd.	64
Concrete Structures			Cu. Yd.	33.4
Concrete Encasement			Cu. Yd.	2.4
Stud Shear Connectors			Each	56
Reinforcement Bars, Epoxy Coated			Pound	3,600
Bar Splicers			Each	26
Steel Piles HP10x57			Foot	420
Test Pile Steel, HP10x57			Each	1
Underwater Structure Excavation Protection Location 4			Each	1
Mechanical Splice			Each	42

For details of Bar Splicers, see sheet 16 of 21.  
For details of Piles and Concrete Encasement, see sheet 17 of 21.



<p>HAMPTON, LENZINI &amp; RENWICK, INC. CIVIL &amp; STRUCTURAL ENGINEERS LAND SURVEYORS</p>	<p>3085 STEVENSON DRIVE, SUITE 201 SPRINGFIELD, ILLINOIS 62703 (217) 546-3400</p>	<p>IL RTE. 142 OVER CONTRARY CREEK (NORTH OVERFLOW) F.A.P. ROUTE 776 - SECTION (116BR-2)B-1 HAMILTON COUNTY STRUCTURE NO. 033-0051 / STATION 539+14.20</p>
	<p>ELGIN • SPRINGFIELD</p> <p>PROJECT NUMBER: 12-41-0021-1 DATE: 09/25/07 DESIGNED: S.M.S. CHECKED: S.W.M. DRAWN: D.B.</p>	

PLOT DATE: 10/26/2007 FILE NAME: 0330051-78006-41021br.dwg