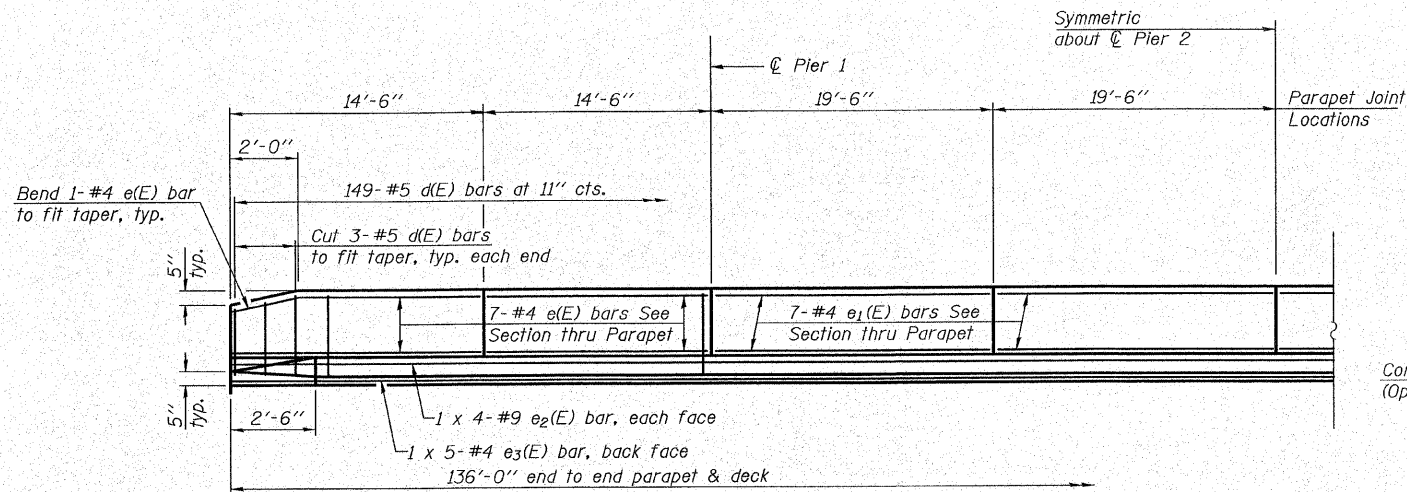


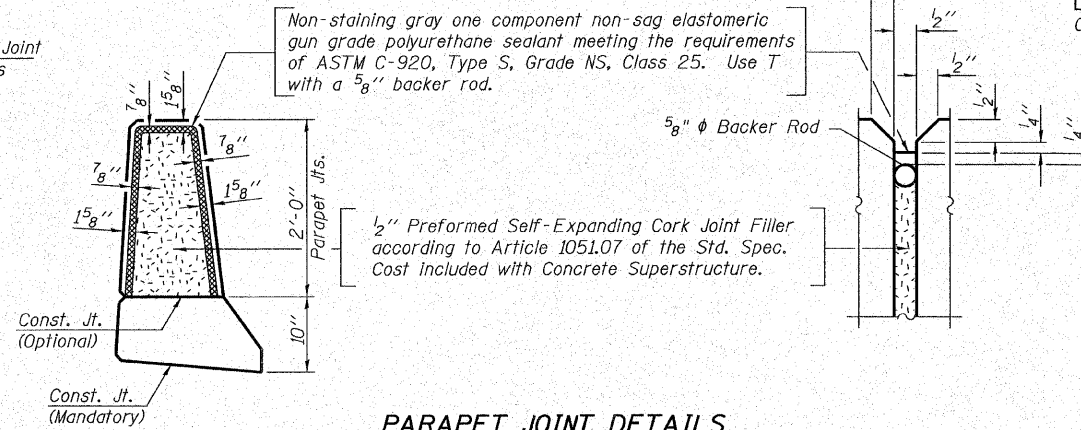
Contract #78006

**SUPERSTRUCTURE
BILL OF MATERIAL**

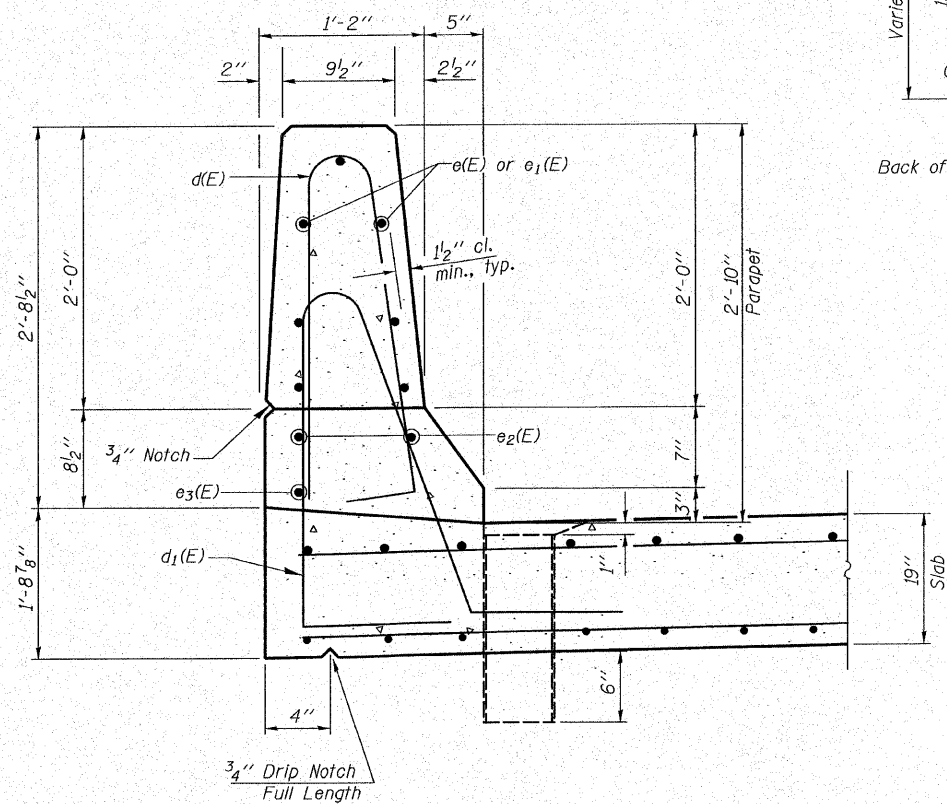
Bar	No.	Size	Length	Shape
a(E)	239	#5	15'-3"	—
a ₁ (E)	239	#5	19'-3"	—
b(E)	62	#8	31'-0"	C
b ₁ (E)	60	#8	24'-4"	C
b ₂ (E)	124	#8	22'-7"	—
b ₃ (E)	60	#8	29'-8"	—
b ₄ (E)	72	#5	16'-4"	—
b ₅ (E)	72	#9	26'-0"	—
b ₆ (E)	72	#5	17'-2"	—
b ₇ (E)	36	#9	27'-8"	—
b ₈ (E)	70	#9	12'-0"	—
b ₉ (E)	35	#9	14'-8"	—
d(E)	298	#5	5'-7"	⌒
d ₁ (E)	298	#5	8'-9"	⌒
e(E)	28	#4	14'-2"	—
e ₁ (E)	28	#4	19'-2"	—
e ₂ (E)	16	#9	37'-3"	—
e ₃ (E)	10	#4	28'-6"	—
s(E)	72	#4	5'-1"	⌒
s ₁ (E)	108	#4	5'-10"	⌒
Reinforcement Bars, Epoxy Coated	Pound		54690	
Concrete Superstructure	Cu. Yds.		320.8	
Bar Splicers	Each		239	



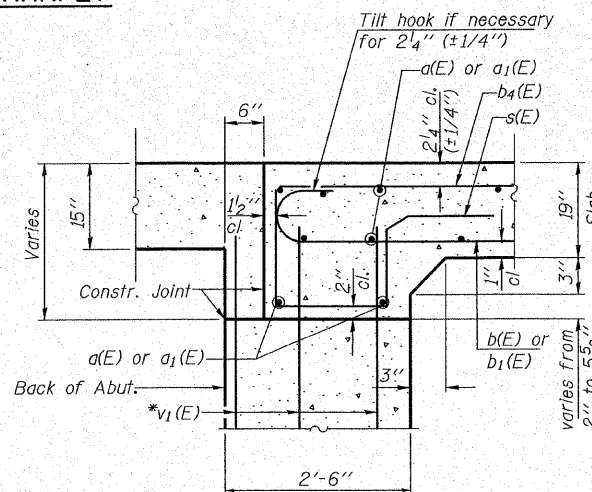
INSIDE ELEVATION OF PARAPET



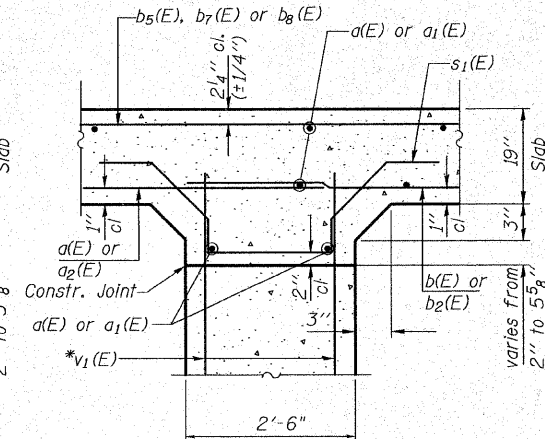
PARAPET JOINT DETAILS



SECTION THRU PARAPET

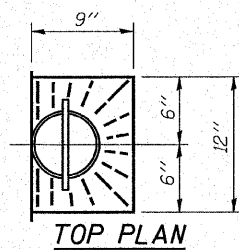


SECTION THRU ABUTMENT

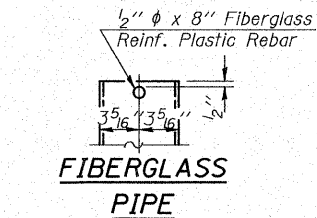


SECTION THRU PIER

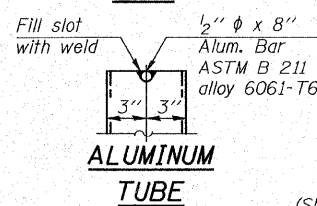
*v₁(E) bars are billed with abutments and piers. See Sheets 11 thru 15 of 21.



TOP PLAN



FIBERGLASS PIPE

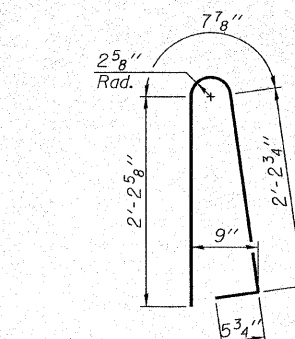


ALUMINUM TUBE

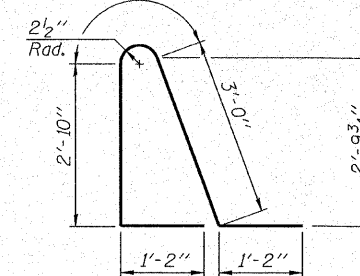
(Showing Aluminum Tube)

Min. Bar Lap

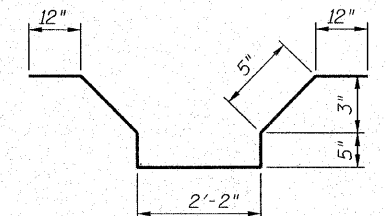
#4 bar = 1'-8"
#9 bar = 4'-5"



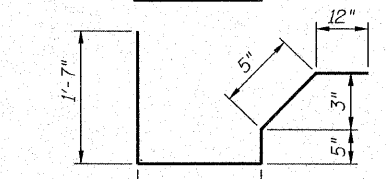
BAR d(E)



BAR d₁(E)



BAR s₁(E)

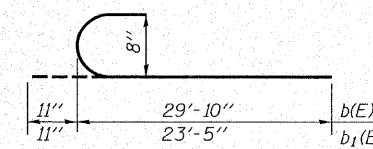


BAR s(E)

Bars indicated thus 1 x 4-#4 etc. indicates 1 line of bars with 4 lengths per line.

NOTES

The exterior surfaces of the floor drains shall be painted with a pigment that matches the color of the concrete.
Fiberglass pipe shall conform to ASTM D 2996, with short-time rupture strength hoop tensile stress of 30,000 p.s.i. minimum.



BAR b(E) & b₁(E)

ILLINOIS DEPARTMENT OF TRANSPORTATION

SHEET TITLE
SUPERSTRUCTURE DETAILS

PROJECT
IL RTE. 142 OVER CONTRARY CREEK (SOUTH OVERFLOW)
FAP ROUTE 776 SECTION (116BR-3)B-1
HAMILTON COUNTY STATION 544+53.10
STRUCTURE NUMBER 033-0052

PROJECT NO. 06028
DATE 10/26/07
DESIGN BY CME/MCB
DRAWN BY TFG
CHECKED BY CME/MCB
DRAWING NO.

COOMBE-BLOXDORF P.C.
Engineers / Land Surveyors
Springfield, Illinois
Design Firm License No. 184-002703

10
OF 21 SHTS