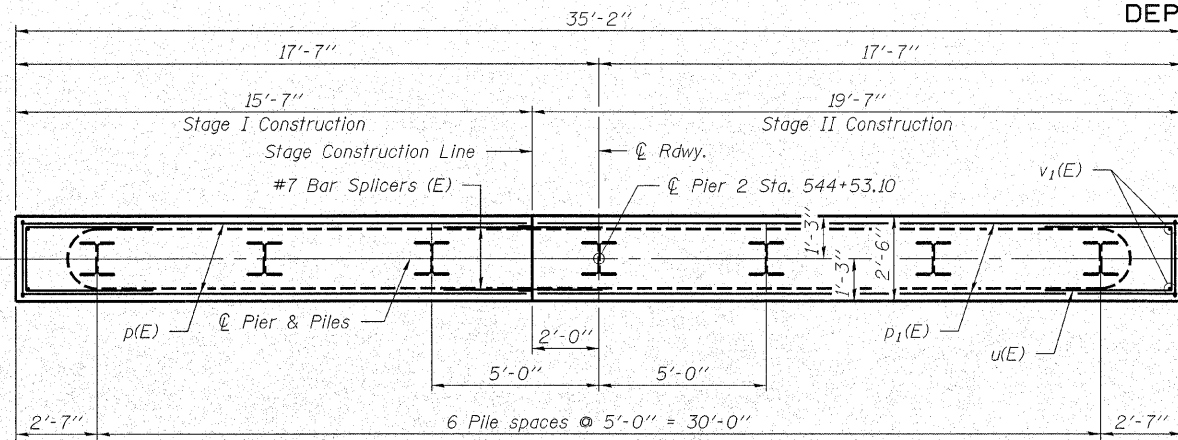


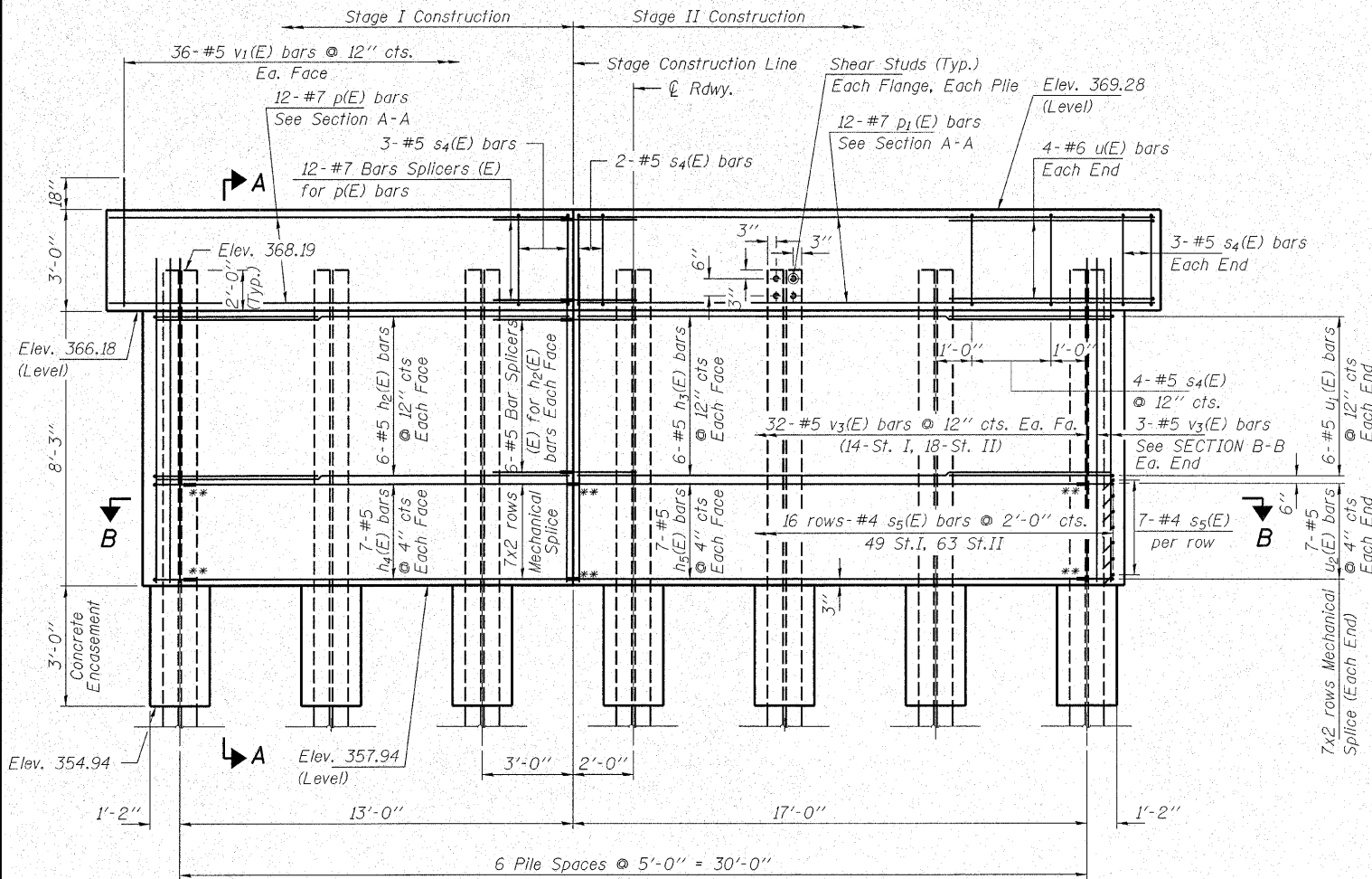
STATE OF ILLINOIS
DEPARTMENT OF TRANSPORTATION

ROUTE NO.	SECTION	COUNTY	SHEET	SHEET	SHEET NO.
F.A.P. 776	(116BR-3)B-1	HAMILTON	140	79	21 SHEETS
FED. ROAD DIST. NO. 7		ILLINOIS	FED. AID PROJECT-		

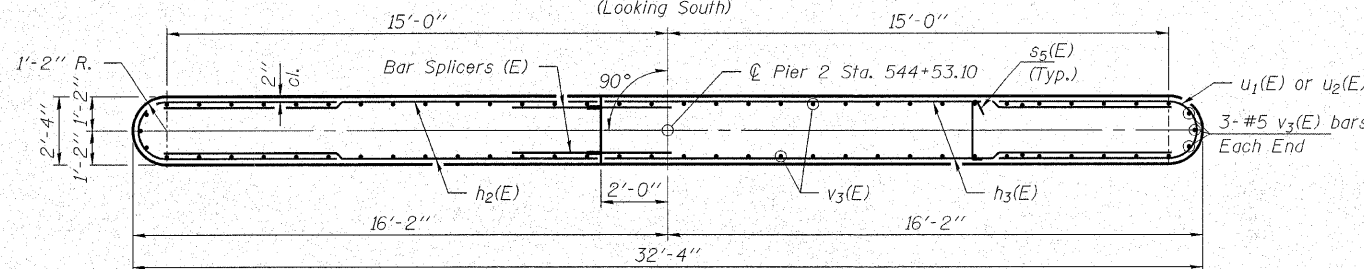
Contract #78006



PLAN

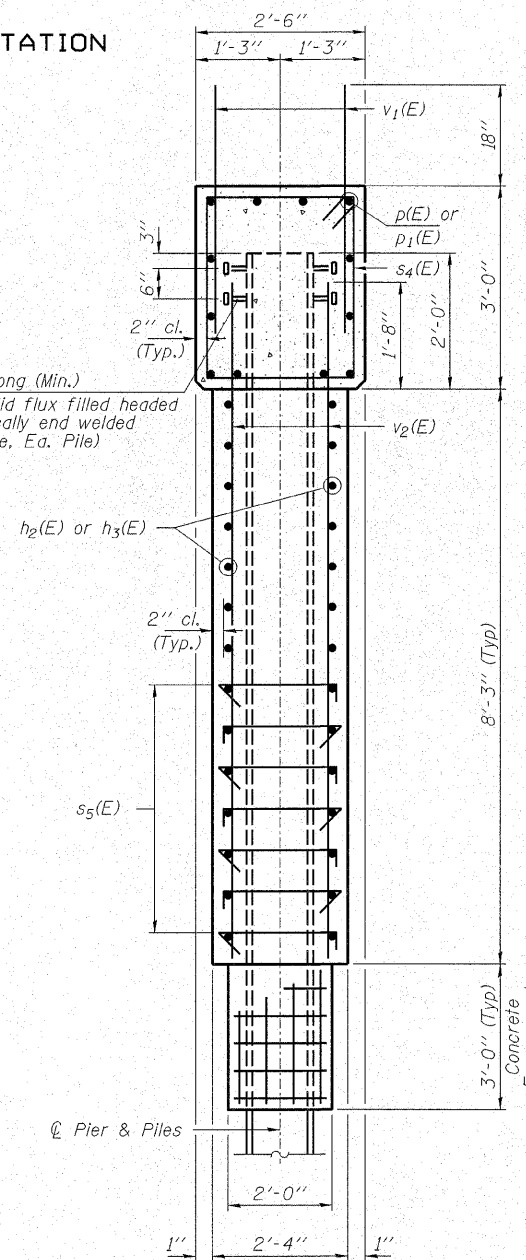


ELEVATION
(Looking South)

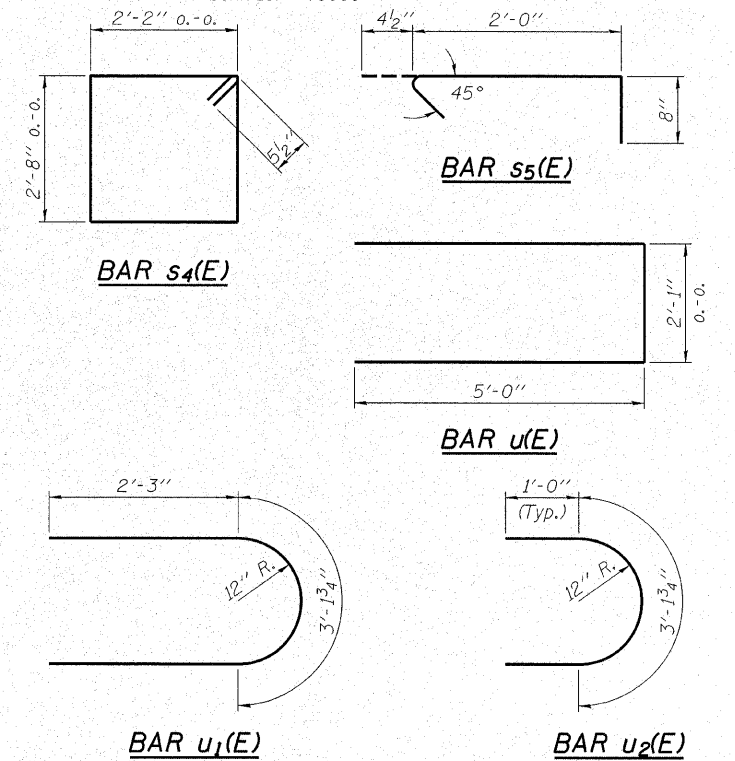


SECTION B-B

4-3/4" φ x 4" long (Min.)
Granular or solid flux filled headed studs automatically end welded (Typ. Ea. flange, Ea. Pile)



SECTION A-A



BILL OF MATERIAL - PIER 2

BAR	NO.	SIZE	LENGTH	SHAPE
h2(E)	12	#5	12'-10"	—
h3(E)	12	#5	16'-10"	—
h4(E)	14	#5	11'-10"	—
h5(E)	14	#5	15'-10"	—
p(E)	12	#7	15'-3"	—
p1(E)	12	#7	19'-3"	—
s4(E)	31	#5	10'-7"	⊏
s5(E)	112	#4	3'-1"	⊏
u(E)	8	#6	12'-1"	—
u1(E)	12	#5	7'-8"	—
u2(E)	14	#5	5'-2"	—
v1(E)	72	#5	4'-0"	—
v3(E)	70	#5	9'-6"	—
Concrete Structures		Cu. Yd.	32.5	
Concrete Encasement		Cu. Yd.	2.4	
Stud Shear Connectors		Each	56	
Reinforcement Bars, Epoxy Coated		Pound	3,500	
Bar Splicers		Each	24	
Furnishing Steel Piles HP10x57		Foot	360	
Test Pile Steel HP10x57		Each	1	
Underwater Structure Excavation		Each	1	
Protection Location 7		Each	1	
Mechanical Splice		Each	42	

For details of Bar Splicers, see sheet 16 of 21.
For details of Piles and Concrete Encasement, see sheet 17 of 21.

PILE DATA

Type and Size _____ Steel HP10x57
No. Req'd. _____ 7
Nominal Req'd Bearing _____ 453 Kips/Pile
Allowable Resistance Available _____ 151 Kips/Pile
Est. Lengths _____ 60 Ft/Pile

Notes: The Steel H-Piles shall be according to AASHTO M270 Grade 50.

The test piles shall be driven to 110 percent of the Nominal Required Bearing indicated in the pile data information.

* Includes one test pile to be driven in a permanent location.

** Mechanical splice

<p>HAMPTON, LENZINI & RENWICK, INC. CIVIL & STRUCTURAL ENGINEERS LAND SURVEYORS</p> <p>3085 STEVENSON DRIVE, SUITE 201 SPRINGFIELD, ILLINOIS 62703 (217) 548-3400</p> <p>ELGIN • SPRINGFIELD</p>		<p>PIER 2</p> <p>IL RTE. 142 OVER CONTRARY CREEK (SOUTH OVERFLOW)</p> <p>F.A.P. ROUTE 776 - SECTION (116BR-3)B-1</p> <p>HAMILTON COUNTY</p> <p>STRUCTURE NO. 033-0052 / STATION 544+53.10</p>
PROJECT NUMBER: 12-41-0021-1	DATE: 10/25/07	
DESIGNED: R.J.P.	CHECKED: S.W.M.	DRAWN: D.A.B.

PLOT DATE: 10/26/2007 FILE NAME: 0330052-78006-41021br-rds-e0052.dgn