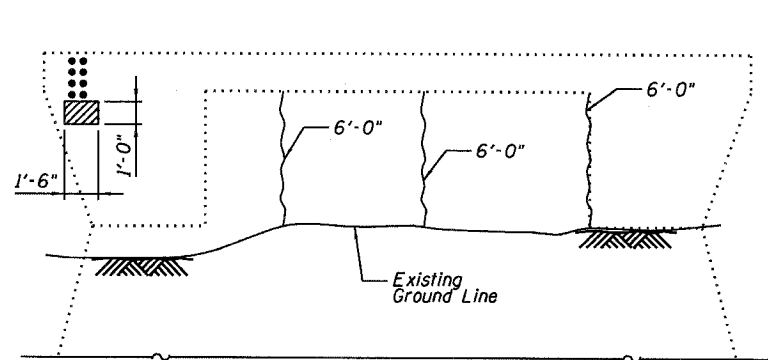


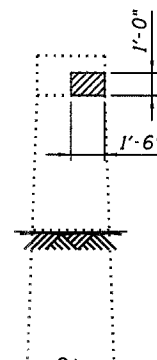
STATE OF ILLINOIS
DEPARTMENT OF TRANSPORTATION

ROUTE NO.	SECTION	COUNTY	SQ. FEET	POST	SHEET NO. 13
F.A.P. 778	3BR-1	HARDIN	69	23	14 SHEETS
FED. ROAD DIST. NO. 7	ILLINOIS	FED. AID PROJECT-			

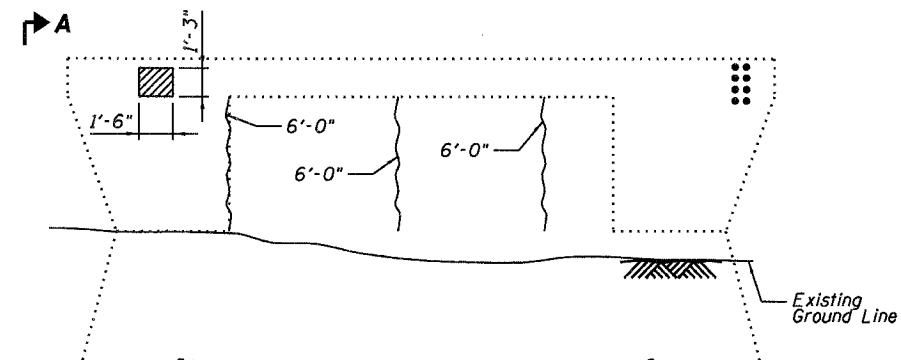
Contract #78023



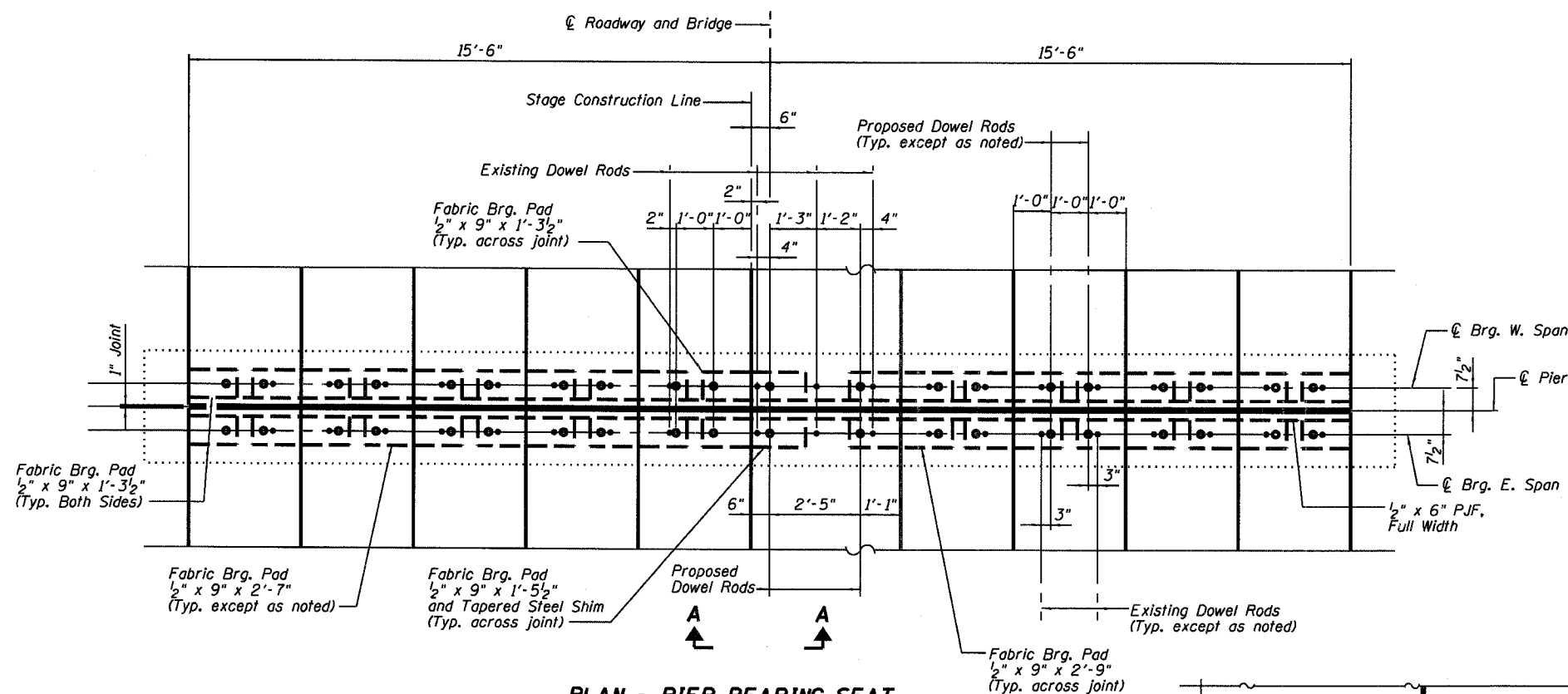
ELEVATION - PIER - WEST FACE
(Looking Southeast)



VIEW A-A

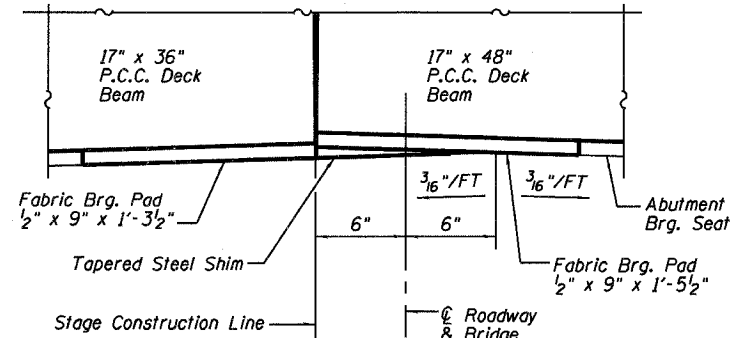


ELEVATION - PIER - EAST FACE
(Looking Northwest)



PLAN - PIER BEARING SEAT

(Looking Downstation)
Concrete wearing surface not shown for clarity.



SECTION A-A

BILL OF MATERIAL

Item	Unit	Total
Structural Repair of Concrete (Depth Equal to or less than 5 inches)	Sq. Ft.	6
Concrete Sealer	Sq. Ft.	6
Epoxy Crack Injection	Foot	36

LEGEND

- Structural Repair of Concrete (Depth equal to or less than 5")
- Epoxy Crack Injection
- Existing Dowel Rod/Pre-stage I Shoring Dowel Rod
- Proposed Dowel Rod

Notes:
Existing and Pre-stage I dowel rods shall be burned off flush with the existing concrete face, ground smooth, and sealed with epoxy. Cost is included with Removal of Existing Superstructures.
Concrete sealer shall be applied to concrete repair areas.
Cracks $\geq \frac{1}{16}$ " shall be repaired by epoxy crack sealing according to Section 590 of the Standard Specifications.

PIER REPAIRS
ILL. ROUTE 34 OVER PINHOOK CREEK
F.A.P. ROUTE 778 SECTION 3BR-1
HARDIN COUNTY
STATION 806+15.00
STRUCTURE NO. 035-0005



DESIGNED	RLM
CHECKED	MEL
DRAWN	AEC
CHECKED	RLM

10/04/07