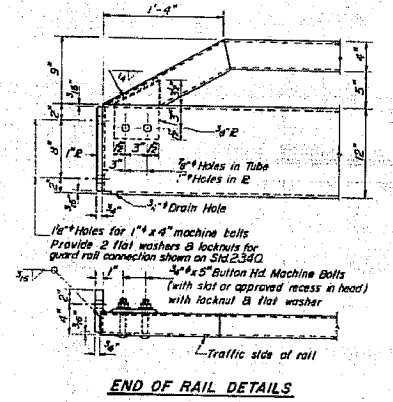
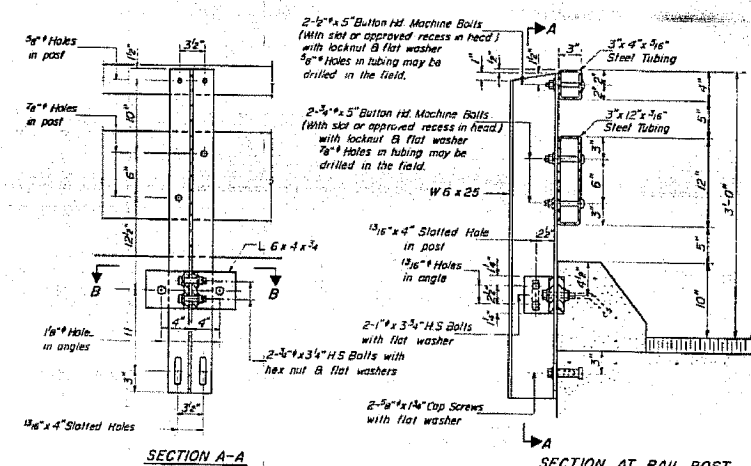
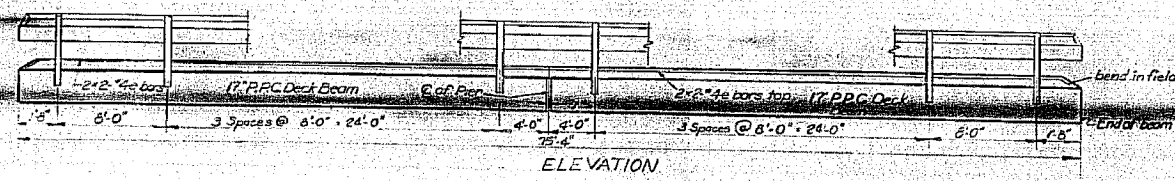


F.A.P. RTE.	SECTION	COUNTY	TOTAL SHEETS	SHEET NO.
778	3BR-1	HARDIN	69	28
STA.		TO STA.		
FED. ROAD DIST. NO. 7 ILLINOIS FED. AID PROJECT				

STATE OF ILLINOIS
DEPARTMENT OF TRANSPORTATION

778	3BR-1	HARDIN	14	9
SHEET NO. 2				
SHEETS				



NOTES

1. Hollow structural steel tubing shall conform to the requirements of ASTM designation A-500 Grade B or A-501 Structural Steel Tubing.

2. All other steel shapes and plates shall conform to the requirements of AASHTO M-83 except posts shall conform to AASHTO M-188.

3. Bolts, cap screws, and nuts shall conform to the requirement of ASTM designation A-307 except for high strength bolts, nuts and washers noted which shall conform to AASHTO M-404.

4. All bolts, nuts, cap screws, washers and lock washers shall be galvanized in accordance with AASHTO M-232.

5. All posts, railings, rail splices, anchor devices and angles shall be galvanized after shop fabrication in accordance with AASHTO M-11 and ASTM A-305. Galvanized rail shall not be painted.

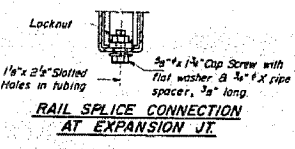
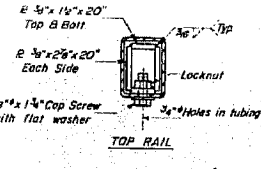
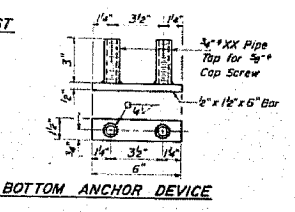
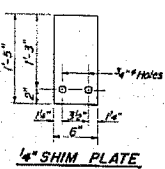
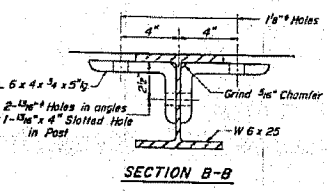
6. Railing shall be in accordance with Section 508 of the Standard Specifications, except as noted, and shall be paid for at the contract unit price per lined foot for STEEL RAILING, TYPE T.

7. All field drilled holes shall be coated with an approved zinc rich paint before erection.

8. The lower portion of the post flange in contact with concrete shall receive two coats of asphalt paint conforming to Section 714.08 Type B or place 1/2" fabric bearing pad between the post and concrete.

9. The 1/2" high strength bolts used to connect the 6" x 4" x 3/8" angles to the post shall be tightened in accordance with Article 507.04(g)(3) of the Standard Specifications. The 1/2" high strength bolts connecting the angles to the concrete shall be tightened to a snug fit and given an additional 1/2 turn.

10. For multi-span bridges, sufficient 1/2" x 6" x 5" galvanized steel shims shall be provided to align rail between adjacent spans. Cost incidental to Steel Railing.



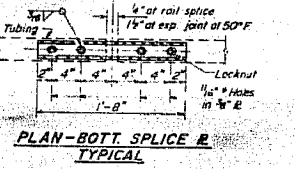
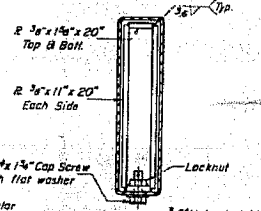
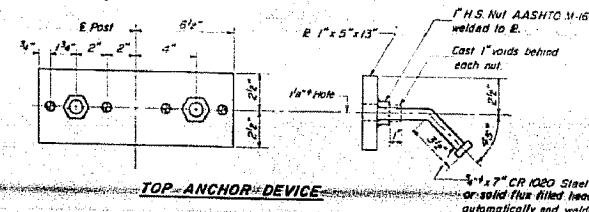
CURB & RAIL BILL OF MATERIAL

Bar	No	Size	Length	Shape
1	15	1/2"	19'-5"	
Reinforcement Bars Lbs. 210				
Class X Concrete Cu Yds. 4.7				
Steel Railing, Type T Lin. Ft. 151				

DESIGNED DR Goffhard
CHECKED [Signature]
DRAWN DR Goffhard
CHECKED [Signature]

APPROVED [Signature]
DIRECTOR OF HIGHWAYS

R-24 8-1-76 (9'-0" Maximum Post Spacing)



TYPE T STEEL RAILING
F.A.P. 778 SEC 3BR-1
HARDIN COUNTY
STATION 806+15.00

DATE
FILE NAME
PLOT SCALE
USER NAME



FOR INFORMATION ONLY

EXISTING STRUCTURE PLANS
F.A.P. ROUTE 778 (IL ROUTE 34)
SECTION 3BR-1
HARDIN COUNTY