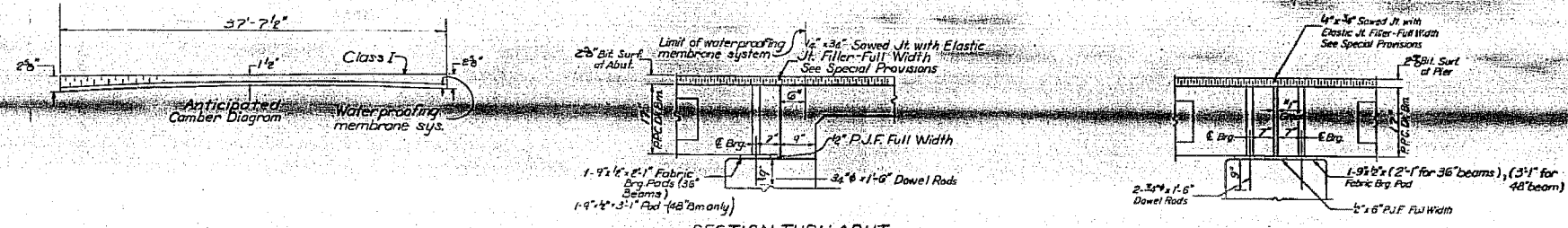


F.A.P. RTE.	SECTION	COUNTY	TOTAL SHEETS	SHEET NO.
778	3BR-1	HARDIN	69	29
STA.		TO STA.		
FED. RDW DIST. NO. 7 ILLINOIS FED. AID PROJECT				

STATE OF ILLINOIS
DEPARTMENT OF TRANSPORTATION

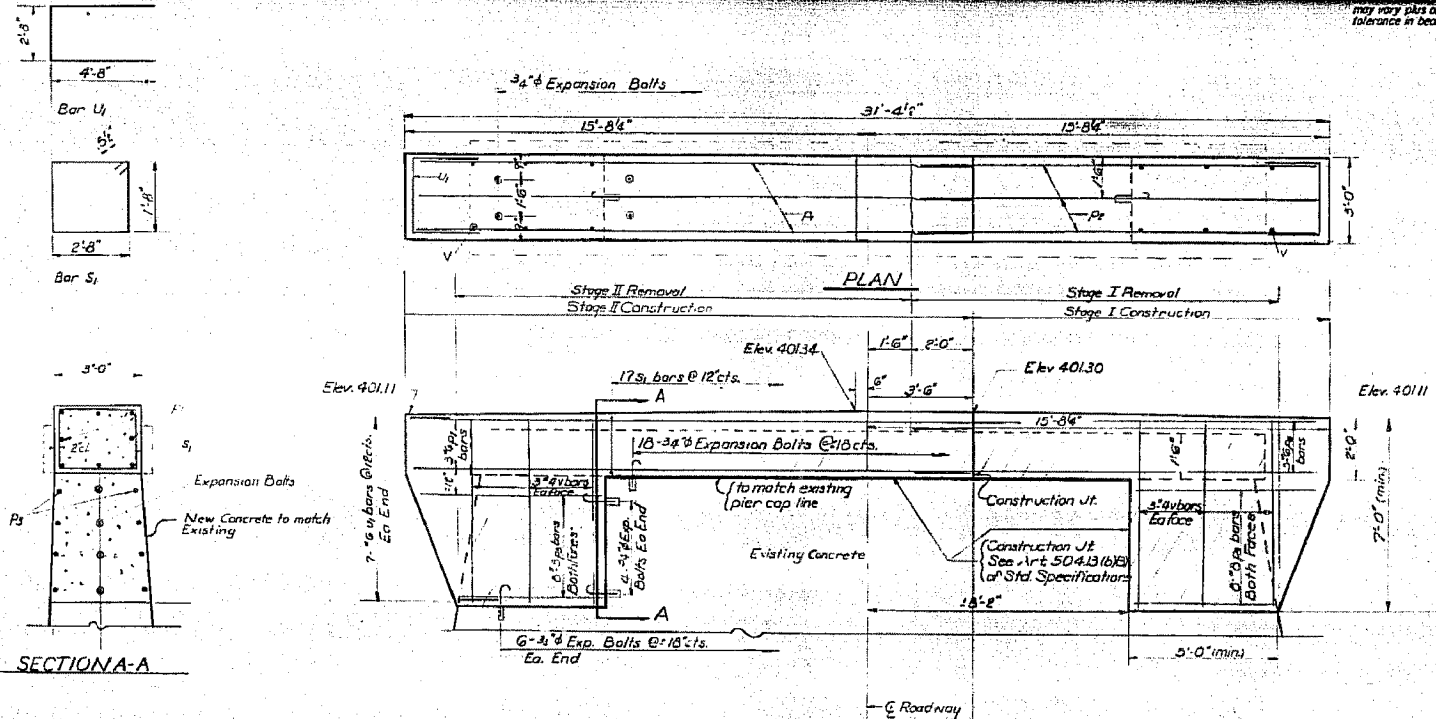
PROJECT NO.	SECTION	COUNTY	DATE	BY	CHECKED
778-061	3BR-1	HARDIN	14	J.D.	D.R.G.



SECTION THRU ABUT

SECTION THRU PIER

*1" Joint shall be packed with a very dry mix of concrete to accommodate tolerance in beam lengths.



PIER ELEVATION
(Looking South)

PIER
BILL OF MATERIALS

Bar	No.	Size	Length	Shape
V	12	#4	6'-3"	
H	8	#6	16'-6"	
E	8	#6	17'-6"	
D	18	#6	4'-0"	
S	17	#5	9'-7"	
U	14	#6	12'-0"	

Class X Concrete Cu Wts. 1.0
Reinforcement Bars Lbs. 900
Expansion Bolts 3/8" Each 36
Concrete Removal Cu Wts. 1.0

DESIGNED: D.R. Gathard
CHECKED: D. Williams / B. Williams
DRAWN: D.R. Gathard
CHECKED: D.A.B.

DATE: January 19, 1978
EXAMINED: [Signature]
PASSED: [Signature]
APPROVED: [Signature]

Note: Hatched Area indicates Concrete Removal
Reinforcement extending into removed area shall be
cleaned and incorporated into new construction.
Expansion bolts shall be anchored in sound concrete.
All edges shall have standard 3/4" chamfer except as noted.

DETAILS & PIER
P.A. RTE. 778 SEC. 3B-DRI
HARDIN COUNTY
STATION 806+15.00

DATE: 10/04/07
FILE NAME: [unclear]
PLOT SCALE: [unclear]
USER: [unclear]



FOR INFORMATION ONLY

EXISTING STRUCTURE PLANS
F.A.P. ROUTE 778 (IL ROUTE 34)
SECTION 3BR-1
HARDIN COUNTY