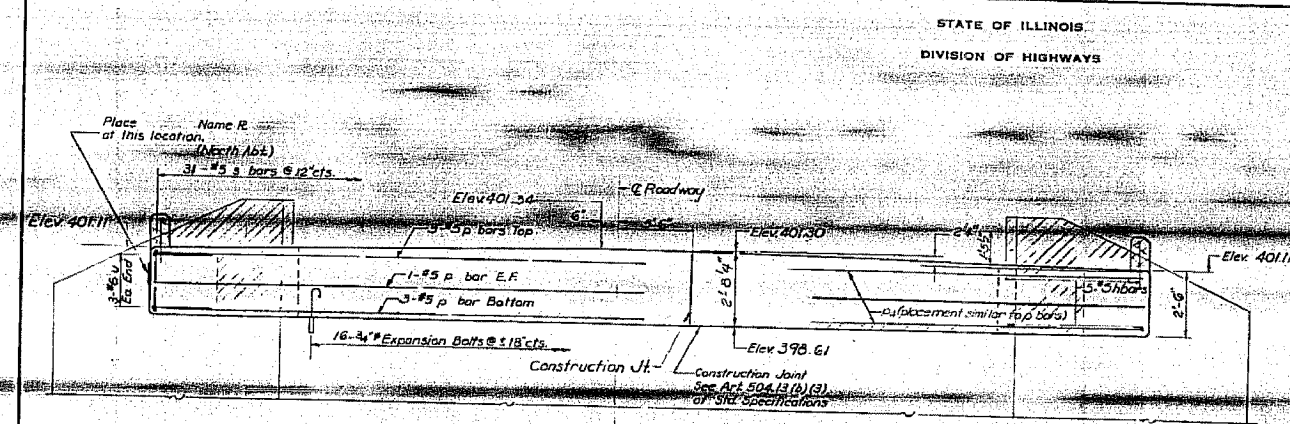
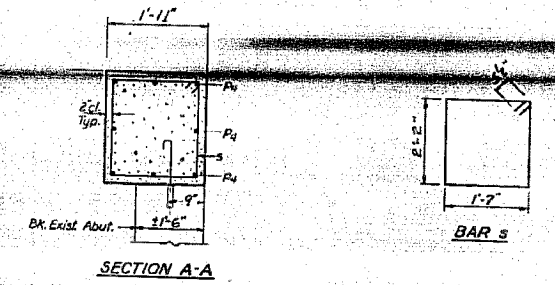


F.A.P. RTE.	SECTION	COUNTY	TOTAL SHEETS	SHEET NO.
778	3BR-1	HARDIN	69	30
STA.		TO STA.		
FED. ROAD DIST. NO. 7 ILLINOIS FED. AID PROJECT				

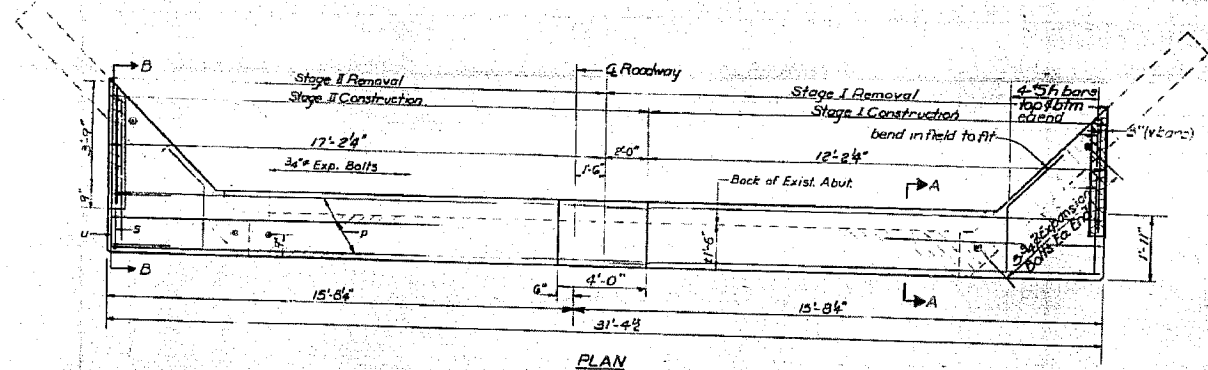
778	3BR-1	HARDIN	14	11
SHEET NO. 6				
6 SHEETS				



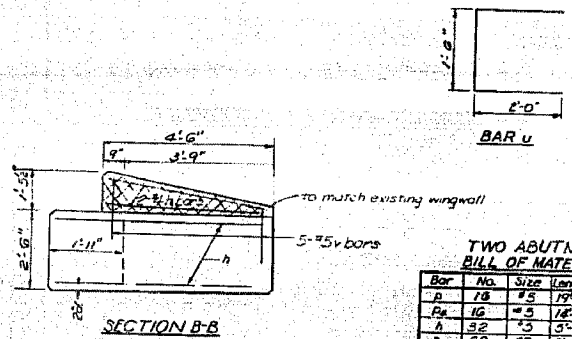
ELEVATION
(South Abt. looking South)
(North Abt. looking North)
similar by 180° rotation



SECTION A-A



PLAN



SECTION B-B

TWO ABUTMENTS
BILL OF MATERIAL

Bar No.	Size	Length	Shape
A	#5	19'-0"	
P4	#5	18'-0"	
H	#5	5'-5"	
S	#5	8'-5"	
U	#5	4'-5"	
V	#5	2'-5"	
Class X Concrete		Cu Yds	12.4
Reinforcement Bars		Lbs	1450
Expansion Bolts		Each	52
Concrete Removal		Cu Yds	7.0

DESIGNED DRGottford
CHECKED J. Palmer
DRAWN DRGottford
CHECKED JAB

January 19 1978
ESTIMATED
PASSED
APPROVED

NOTE
Hatched area indicates Concrete Removal. Reinforcement extending into removed area shall be cleaned and incorporated into the new construction.
Expansion bolts shall be anchored in sound concrete. All edges shall have standard 3/4" chamfers except as noted.
Cross hatched area to be poured after all R.P.C. beams are in place.

ABUTMENTS
F.A.R.T.E. 778 SEC 3B-DR-1
HARDIN COUNTY
STATION: 806+15.00

DATE
FILE NAME
PLOT SCALE
USER NAME



FOR INFORMATION ONLY

EXISTING STRUCTURE PLANS
F.A.P. ROUTE 778 (IL ROUTE 34)
SECTION 3BR-1
HARDIN COUNTY