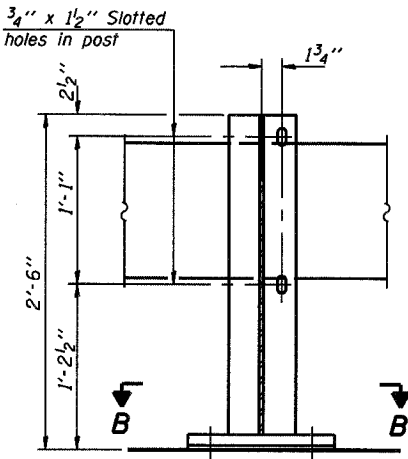


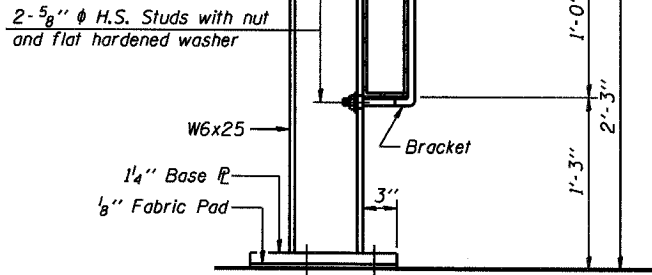
STATE OF ILLINOIS
DEPARTMENT OF TRANSPORTATION

ROUTE NO.	SECTION	COUNTY	DATE	SHEET NO.
F.A.P. 778	4BR-1	HARDIN	69 49	12 SHEETS
FED. ROAD DIST. NO. 7	ILLINOIS	FED. AID PROJECT		

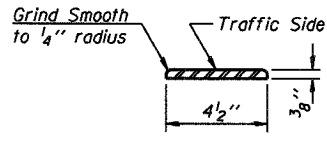
Contract #78023



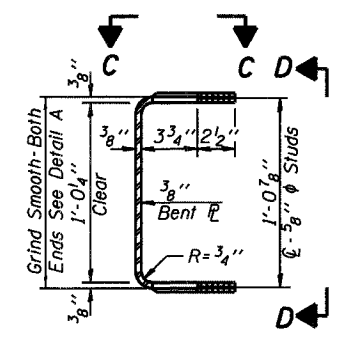
SECTION A-A



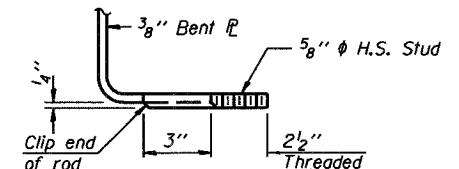
SECTION AT RAIL POST



DETAIL A

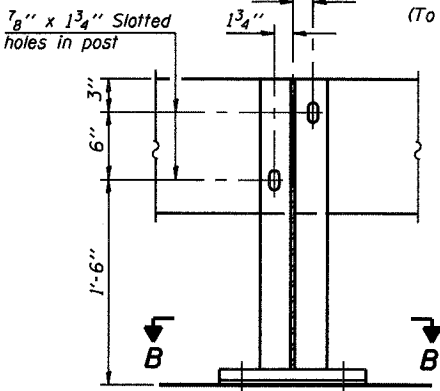


SECTION THRU BRACKET



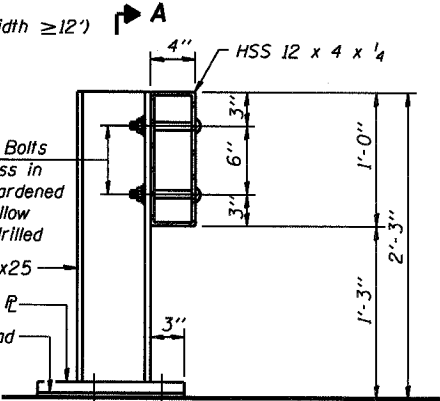
VIEW E-E

ALTERNATE I
(To be used only for Roadway width ≥ 12')

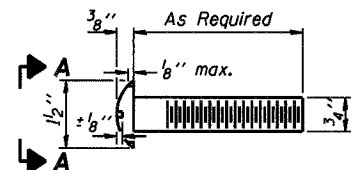


SECTION A-A

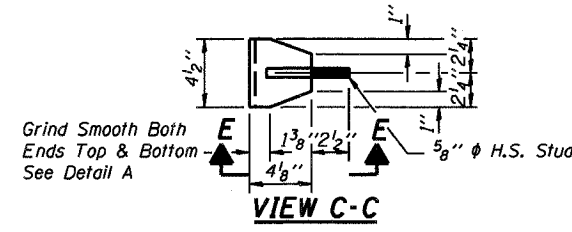
2-3/4" ϕ x 6" Round Head Bolts (With slot or approved recess in head) with locknut & flat hardened washer. 7/8" ϕ holes in hollow structural section may be drilled in the field.



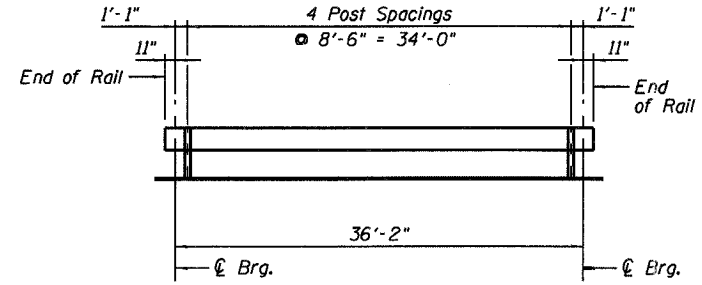
SECTION AT RAIL POST



VIEW A-A
ROUND HEAD BOLT

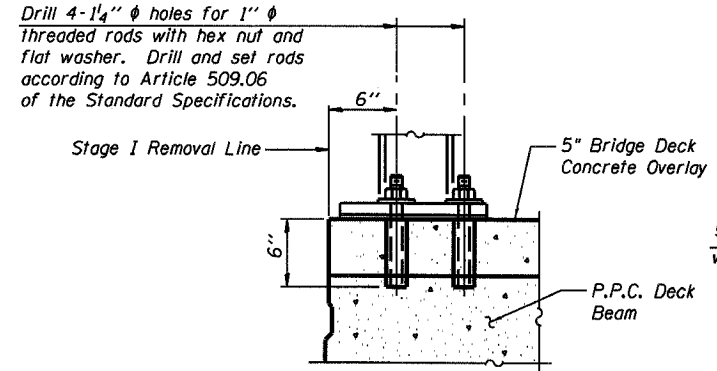


VIEW C-C

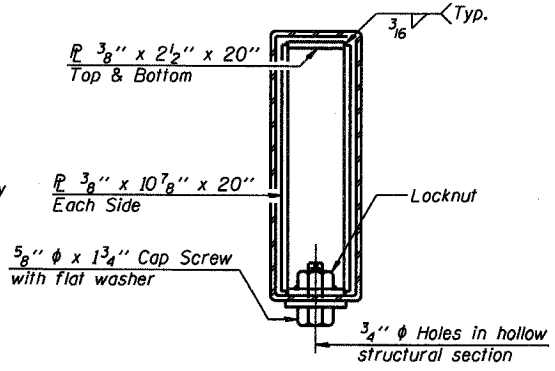


TEMPORARY BRIDGE RAIL POST SPACING
(10'-9" Maximum Post Spacing)

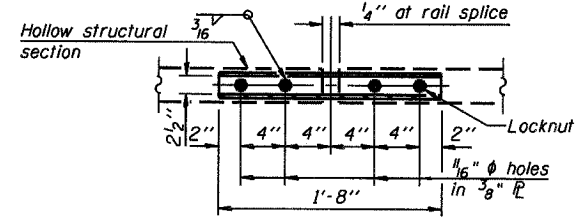
ALTERNATE II



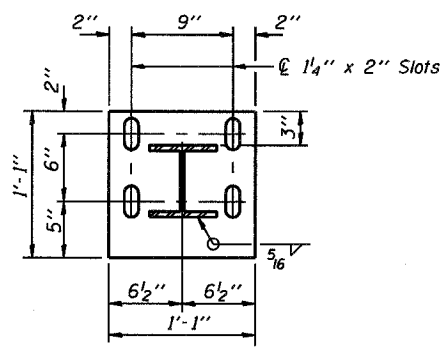
ANCHORAGE DETAILS



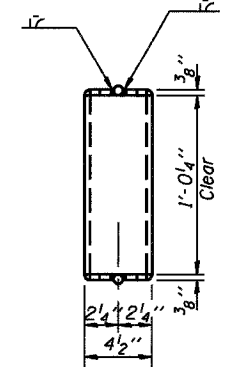
SECTION AT RAIL SPLICE



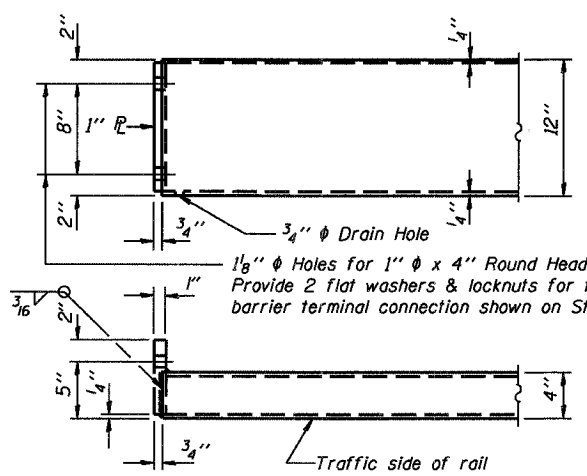
PLAN-BOTT. SPLICE
TYPICAL



SECTION B-B



VIEW D-D



END OF RAIL DETAILS

BILL OF MATERIAL

Item	Unit	Quantity
Steel Railing (Temporary)	Foot	38

Notes:
Temporary steel railing shall be according to Section 509 of the Standard Specifications and will be paid for at the contract unit price per foot for Steel Railing (Temporary).
The contact surfaces between post flange, rail and inside face of bracket for Alternate I shall be free of all lubricants.
The nut for 5/8" ϕ high strength studs used in Alternate I to connect bracket to post shall be tightened to a snug fit and given an additional one half turn.

STEEL RAILING (TEMPORARY)
FOR STAGE CONSTRUCTION
ILL. ROUTE 34 OVER HOBBS CREEK
F.A.P. ROUTE 778 SECTION 4BR-1
HARDIN COUNTY
STATION 1021+80.00
STRUCTURE 035-0008



DESIGNED	RLM
CHECKED	MEL
DRAWN	AEC
CHECKED	RLM

10/04/07