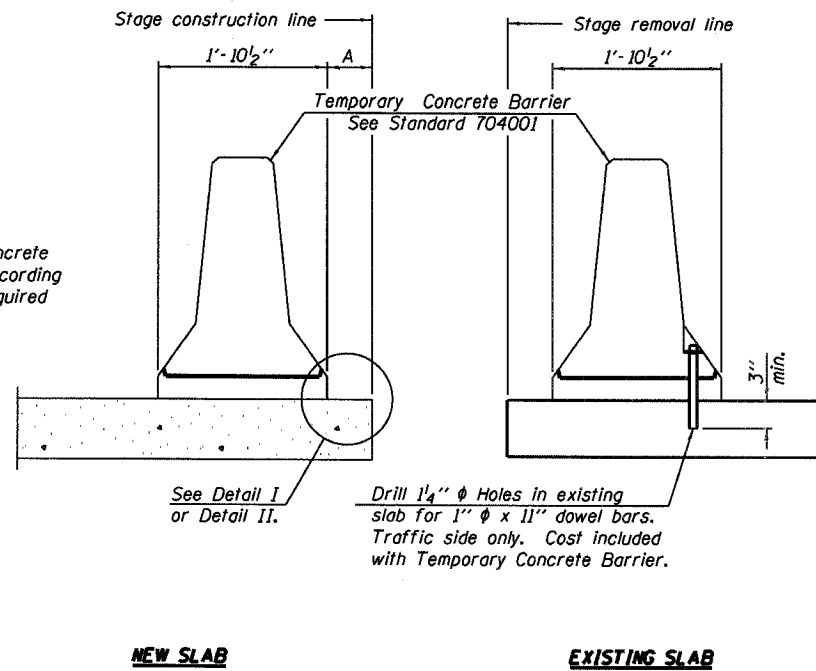


STATE OF ILLINOIS  
DEPARTMENT OF TRANSPORTATION

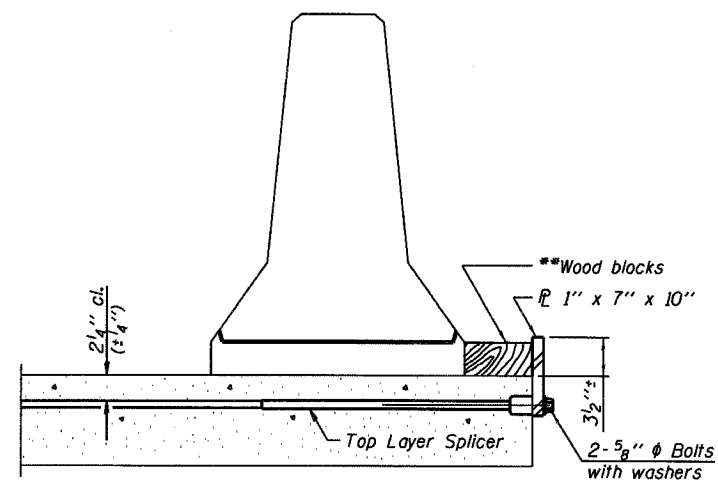
ROUTE NO.	SECTION	COUNTY	STA. SHEETS	SHEET NO.	SHEET NO. 5 12 SHEETS
F.A.P. 778	4BR-1	HARDIN	69	50	
FED. ROAD DIST. NO. 7	ILLINOIS	FED. AID PROJECT			

Contract #78023

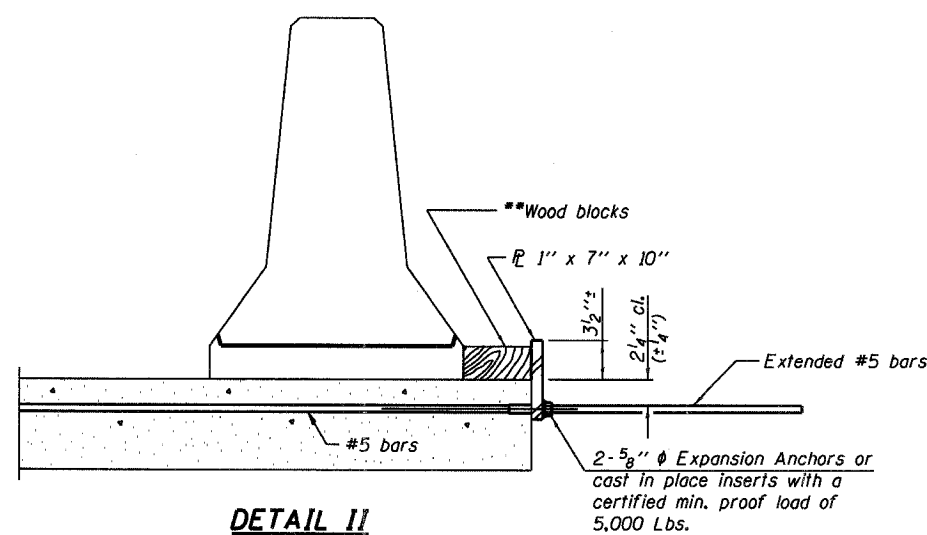
When "A" is 3'-6" or less, the temporary concrete barrier shall be anchored to the new slab according to Detail I or Detail II. No anchorage is required when "A" is greater than 3'-6".



SECTIONS THRU SLAB



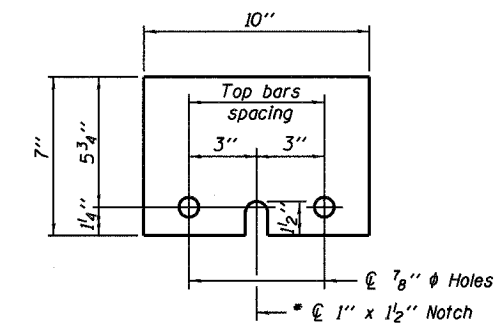
DETAIL I



DETAIL II

NOTES

- Detail I - With Bar Splicer or Couplers: Connect one (1) 1"x7"x10" steel  $\bar{P}$  to the top layer of couplers with 2-5/8"  $\phi$  bolts screwed to coupler at approximate  $\bar{C}$  of each barrier panel.
  - Detail II - With Extended Reinforcement Bars: Connect one (1) 1"x7"x10" steel  $\bar{P}$  to the concrete slab with 2-5/8"  $\phi$  Expansion Anchors or cast in place inserts spaced between the top layer of reinforcement at approximate  $\bar{C}$  of each barrier panel.
- Cost of anchorage is included with Temporary Concrete Barrier. The 1" x 7" x 10" plate shall not be removed until stage II construction forms and all reinforcement bars are in place and the concrete is ready to be placed.  
See Roadway Plans for quantity of Temporary Concrete Barrier.



STEEL RETAINER  $\bar{P}$  1" x 7" x 10"

\* Required only with Detail II

\*\* Wood blocks may be omitted when required to provide minimum stage traffic lane width. When the wood blocks are omitted, the concrete barrier shall be in direct contact with the steel retainer plate.



DESIGNED	RLM
CHECKED	MEL
DRAWN	AEC
CHECKED	RLM

R-27

11-1-06

TEMPORARY CONCRETE BARRIER  
FOR STAGE CONSTRUCTION  
ILL. ROUTE 34 OVER HOBBS CREEK  
F.A.P. ROUTE 778 SECTION 4BR-1  
HARDIN COUNTY  
STATION 1021+80.00  
STRUCTURE NO. 035-0008