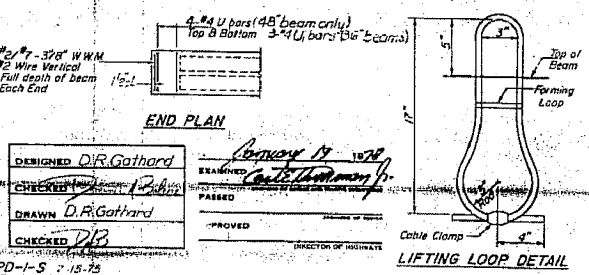
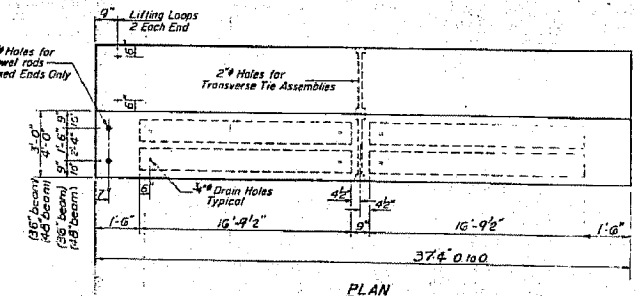
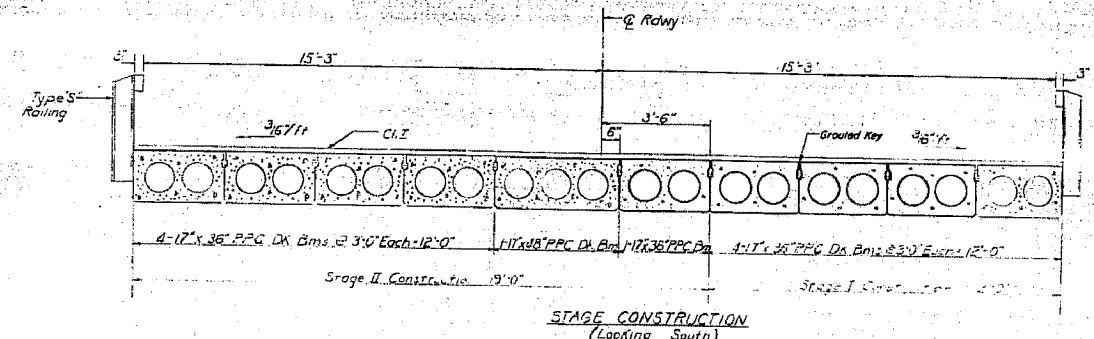
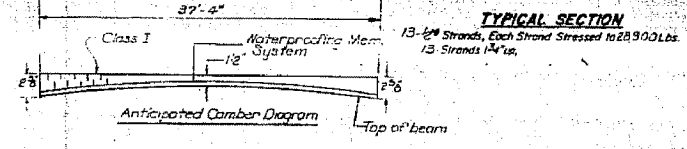
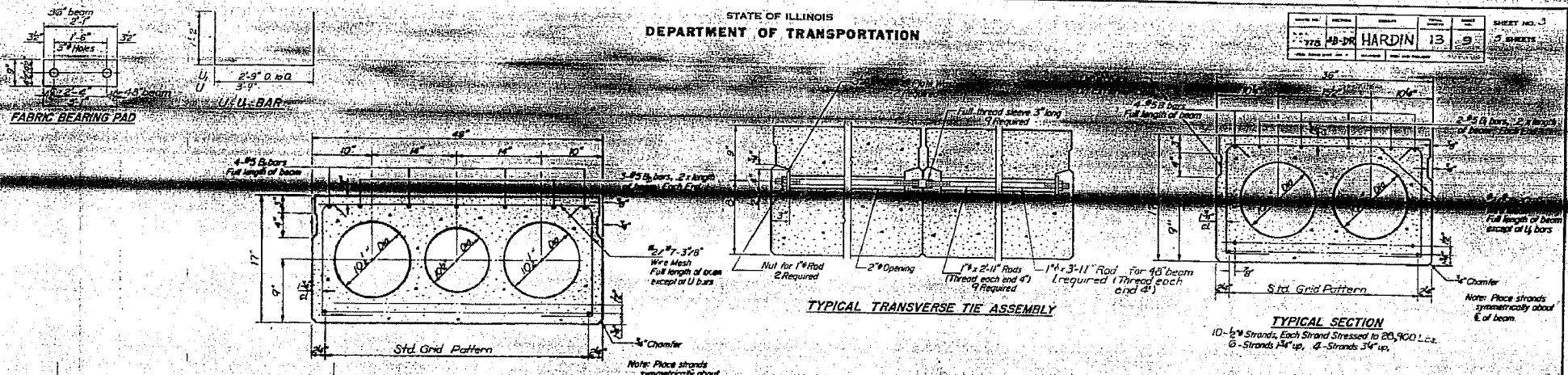


F.A.P. RTE.	SECTION	COUNTY	TOTAL SHEETS	SHEET NO.
778	4BR-1	HARDIN	69	60
STA.		TO STA.		
FED. ROAD DIST. NO. 7		ILLINOIS FED. AID PROJECT		

STATE OF ILLINOIS
DEPARTMENT OF TRANSPORTATION

778	4BR-1	HARDIN	13	9
-----	-------	--------	----	---



DESIGNED D.R. Gathard
CHECKED [Signature]
DRAWN D.R. Gathard
CHECKED D.R. Gathard

EXAMINED [Signature]
PASSED [Signature]
APPROVED [Signature]

PD-1-S 11-15-75

NOTES

Prestressing steel shall be non-powdered high strength, stress-relieved 7-wire strand, Grade 270. The nominal diameter shall be 1/2" and the nominal cross-sectional area shall be 0.033 sq in. Lifting loops shall be 1/2" diameter, 6x25 class wire rope with fiber core and shall have a minimum ultimate tensile strength of 21,000 lbs.

The 1" rods in the transverse tie assembly shall be tightened to a snug fit and the threads set. Pockets that receive transverse tie bar on outside shall be filled with grout after transverse tie assembly is in place.

Longitudinal shear keys shall be packed with a very dry mix of 2-1 sand and P.C. mortar. After beams have been erected, holes for the dowel anchors shall be drilled into the sub-structure and the anchor dowels shall be grouted in place.

Cost of reinforcement and accessories cast into the beam, of bearing pads, of armor angles, and of grouting longitudinal shear keys is included in unit price bid for Precast Prestressed Concrete Deck Beams.

BILL OF MATERIAL

Bar	No.	Size	Length	Shape
Precast Prestressed Concrete Deck Beams 17" x 36"	Sq Ft	1008		
P.P.C. Deck Beams 17" x 36"	Sq Ft	169		

BEAM DETAILS
PART 778 SEC 4BR-1
HARDIN COUNTY
STATION 1021+80

EXISTING STRUCTURE PLANS
F.A.P. ROUTE 778 (IL ROUTE 34)
SECTION 4BR-1
HARDIN COUNTY

FOR INFORMATION ONLY