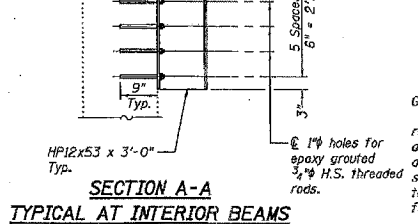
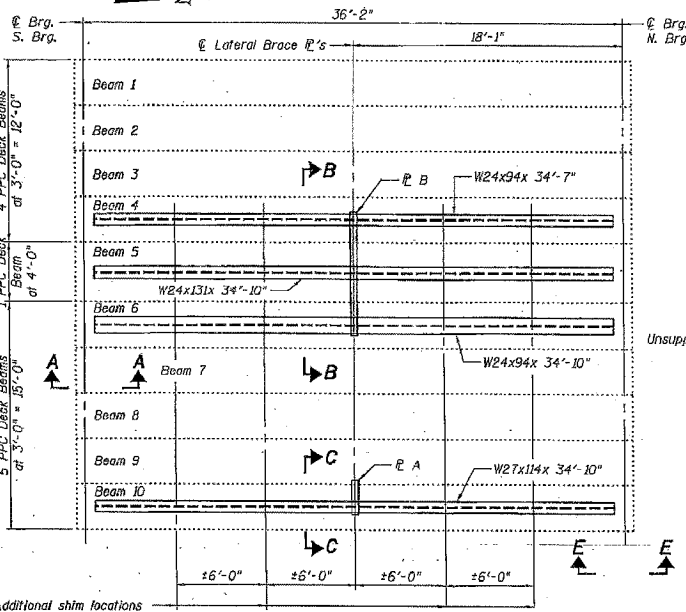
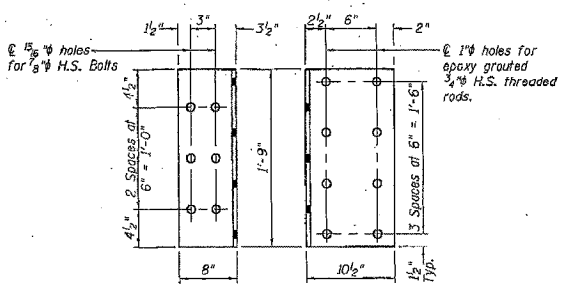
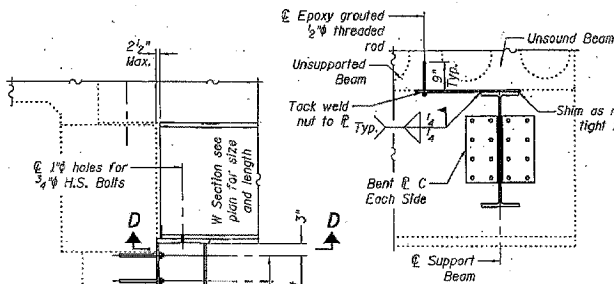
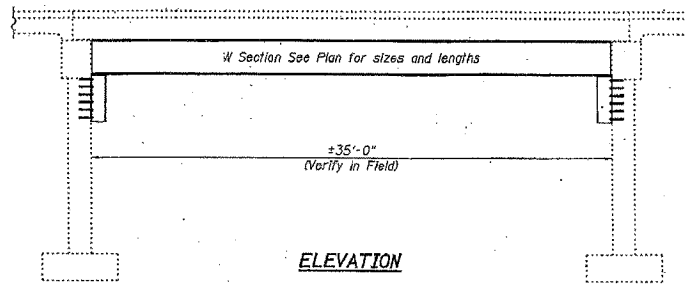


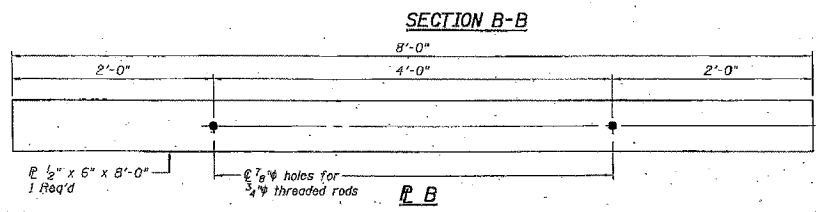
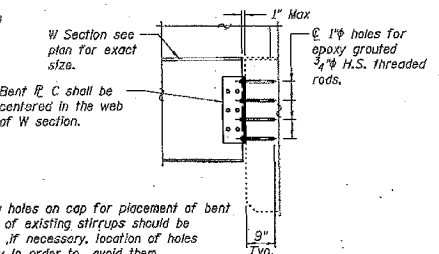
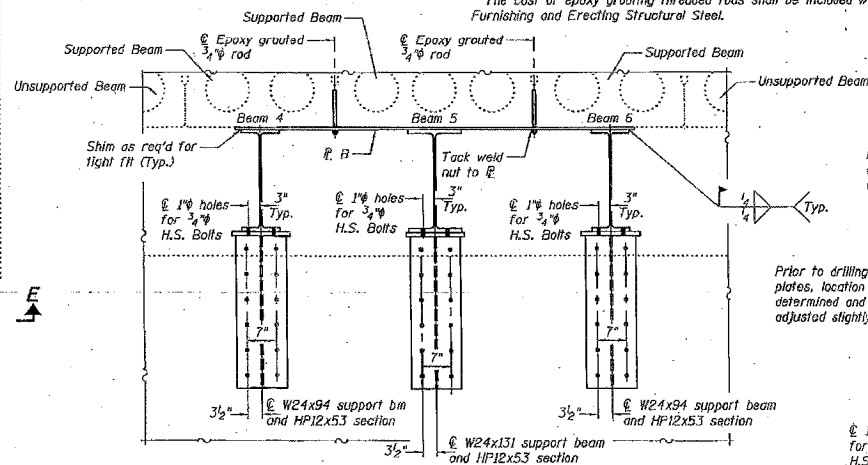
F.A.P. RTE.	SECTION	COUNTY	TOTAL SHEETS	SHEET NO.
778	4BR-1	HARDIN	69	63
STA.		TO STA.		
FED. ROAD DIST. NO. 7		ILLINOIS FED. AID PROJECT		

DATE	REVISION	BY	CHKD	PKT	SHEET NO. 1
					1 SHEETS

STATE OF ILLINOIS
DEPARTMENT OF TRANSPORTATION



GENERAL NOTES
All structural steel shall conform to AASHTO Classification M-270 Gr. 36, unless otherwise noted.
Plan dimensions and details relative to existing plans are subject to routine variations. The Contractor shall field verify existing dimensions and details affecting new construction and make necessary approved adjustments prior to construction or ordering of materials. Such variations shall not be cause for additional compensation for a change in scope of the work, however, the Contractor will be paid for the quantity actually furnished based upon the unit price bid for the work.
See Section 584 of the Standard Specifications for Epoxy Grouting of Threaded Rods.
The cost of epoxy grouting threaded rods shall be included with Furnishing and Erecting Structural Steel.



TOTAL BILL OF MATERIAL

ITEM	UNIT	QUANTITY
Furnishing and Erecting Structural Steel	Pound	16,950

DESIGNED	February 5, 2007
CHECKED	EXAMINED
DRAWN	PASSED
CHECKED	DESIGNED BY BRIDGES AND STRUCTURE

SLT-99-001-07

Expires: November 30, 2008

...version 8 archive\0350008.dgn 2/5/2007 2:56:33 PM

PLT DATE
PLT NAME
PLT SCALE
USER NAME



10/04/07

FOR INFORMATION ONLY

EXISTING STRUCTURE PLANS
F.A.P. ROUTE 778 (IL ROUTE 34)
SECTION 4BR-1
HARDIN COUNTY