

STATE OF ILLINOIS
DEPARTMENT OF TRANSPORTATION
DIVISION OF HIGHWAYS

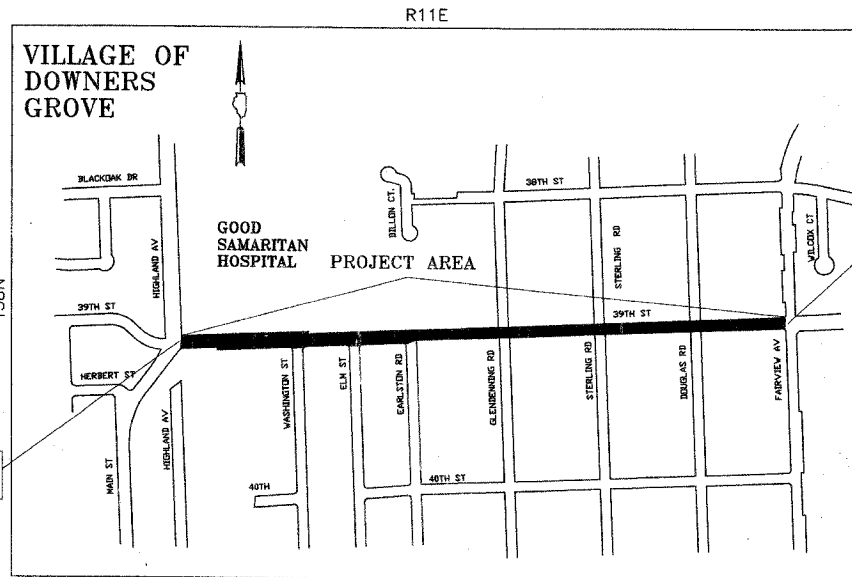
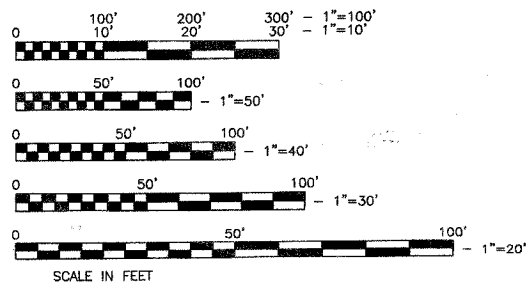
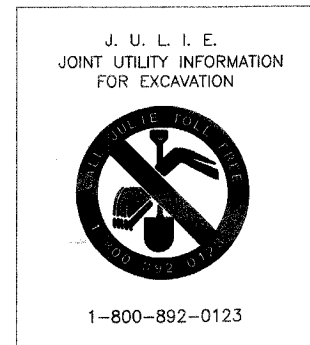
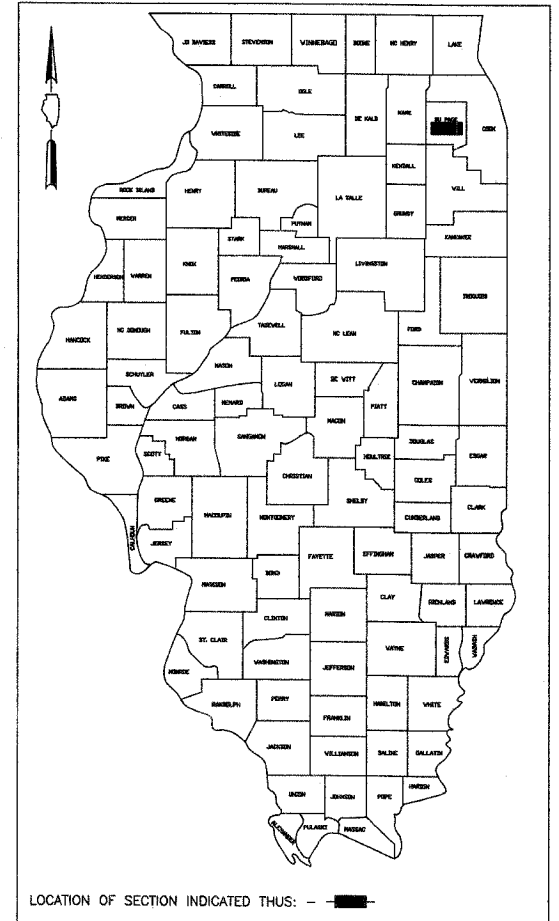
PLANS FOR PROPOSED FEDERAL AID HIGHWAY F.A.U. ROUTE 1476 (39TH STREET) MAIN STREET (FAU 2615) TO FAIRVIEW AVENUE (FAU 2637) ROADWAY RESURFACING (LAPP)

SECTION: 07-00096-00-RS
PROJECT: M-8003(817)
JOB: C-91-308-07
VILLAGE OF DOWNERS GROVE
DU PAGE COUNTY

F. A. U. NO.	SECTION	COUNTY	TOTAL SHEETS	SHEET NO.
1476	07-00096-00-RS	DU PAGE	14	1
FED. ROAD DIST. NO. 1		ILLINOIS	FED. AID PROJECT	
CONTRACT NO. 83935				

INDEX OF SHEETS

SHEET NO.	DESCRIPTION
1	COVER SHEET & LOCATION MAP
2	SUMMARY OF QUANTITIES
3	GENERAL NOTES & IDOT STANDARDS
4	TYPICAL SECTIONS
5	PLAN SHEET (STA. 68+84 TO STA. 72+50)
6	PLAN SHEET (STA. 72+50 TO STA. 84+50)
7	PLAN SHEET (STA. 84+50 TO STA. 96+50)
8	PLAN SHEET (STA. 96+50 TO STA. 99+39)
9	PAVEMENT MARKINGS (STA. 68+84 TO STA. 72+50)
10	PAVEMENT MARKINGS (STA. 72+50 TO STA. 84+50)
11	PAVEMENT MARKINGS (STA. 84+50 TO STA. 96+50)
12	PAVEMENT MARKINGS (STA. 96+50 TO STA. 99+39)
13	CONSTRUCTION DETAILS
14	IDOT DISTRICT ONE TYPICAL PAVEMENT MARKING DETAIL



END IMPROVEMENTS
STA. 99+39

39th STREET DESIGN DESIGNATION
MINOR ARTERIAL
DESIGN SPEED: 35 MPH
ADT: 7,500

(NOT TO SCALE)

LOCATION MAP
LENGTH OF PROJECT=3,055 FT. (0.579 MILE)

FULL SIZE PLANS HAVE BEEN PREPARED USING STANDARD ENGINEERING SCALES. REDUCED SIZE PLANS WILL NOT CONFORM TO STANDARD SCALES. IN MAKING MEASUREMENTS ON REDUCED PLANS, THE ABOVE SCALES CAN BE USED

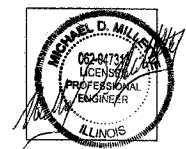
Contract No. 83935

STATE OF ILLINOIS
DEPARTMENT OF TRANSPORTATION
DIVISION OF HIGHWAYS

APPROVED November 2, 2007
Michael D. Millette
DIRECTOR OF PUBLIC WORKS, VILLAGE OF DOWNERS GROVE

PASSED November 6, 2007
Christophe Holt
DIVISION ENGINEER OF LOCAL ROADS AND STREETS

RELEASING FOR
BID BASED ON
LIMITED REVIEW Nov. 6, 2007
Diane O'Keefe
DEPUTY DIRECTOR OF HIGHWAYS
REGION ONE ENGINEER



Michael D. Millette, P.E.
#062-047313
My License Expires 11/30/07
As an official act as Assistant Director of Public Works,
I hereby seal these plans.