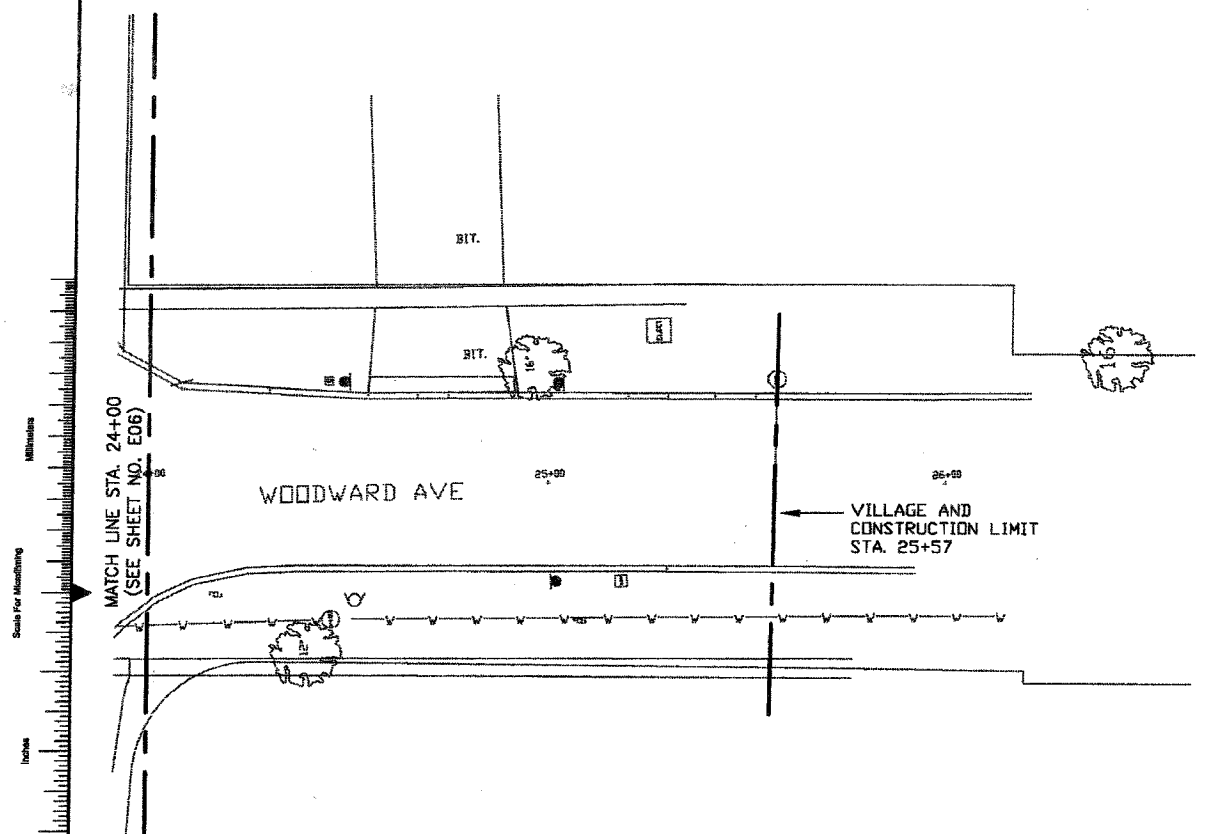
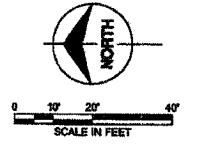


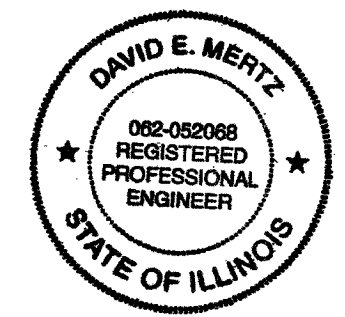
1 2 3 4 5 6 7 8 9 10 11 12 13 14

F.A.P. RTE.	SECTION	COUNTY	TOTAL SHEETS	SHEET NO.
2993	02-0082-00-WR	DU PAGE	49	33
FEDERAL RD. DIST. NO. 1		ILLINOIS	FEDERAL AID PROJECT	
CONTRACT: 83936				



PARTIAL WOODWARD AVENUE LIGHTING LAYOUT - EXISTING
SCALE AS NOTED

COPYRIGHT © 2007 BURNS AND MCDONNELL ENGINEERING COMPANY, INC.



David E. Mertz

date 04 / 10 / 2007	detailed BMH
designed FO	checked DEM
VILLAGE OF DOWNERS GROVE WOODWARD AVENUE LIGHTING LAYOUT STATION 24+00 TO STATION 25+00	
project 45190	contract
drawing E07	rev. 0
sheet of sheets	
file (DOWNERS_45190\CAD\ E07	

A
B
C
D
E
F
G
H
I
J