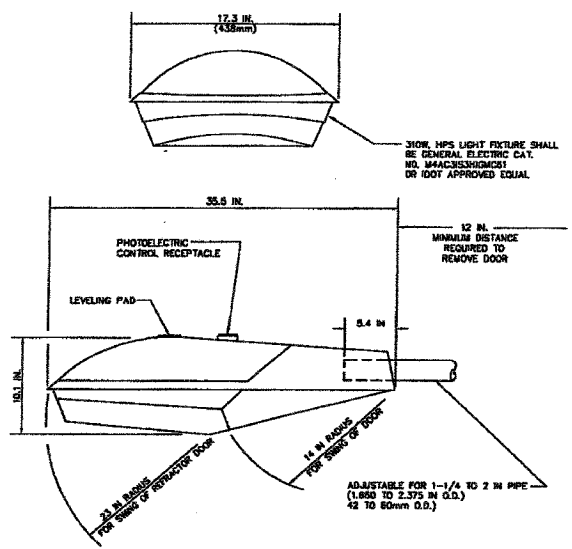
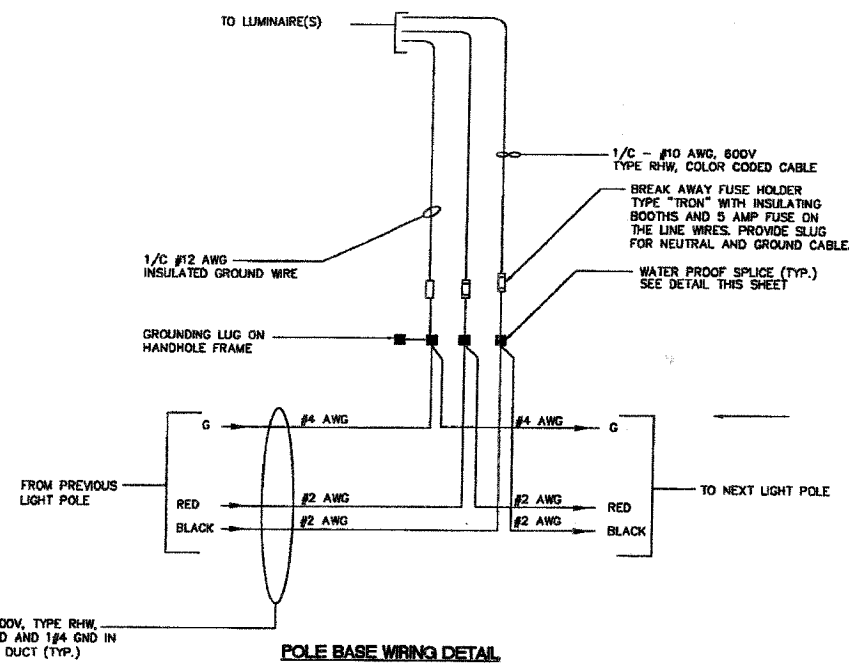


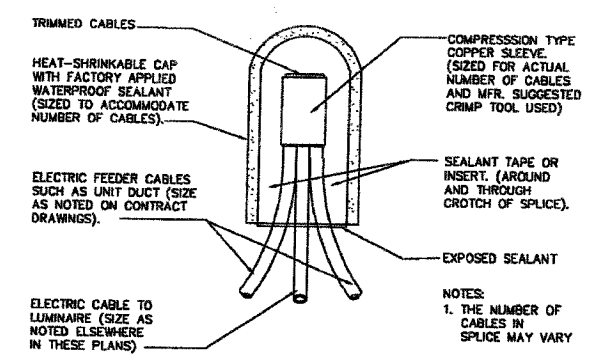
F.A.P. RTE.	SECTION	COUNTY	TOTAL SHEETS	SHEET NO.
2593	02-00092-00-WR	DU PAGE	49	41
FEDERAL RD. DIST. NO. 1 ILLINOIS FEDERAL AID PROJECT				
CONTRACT: 8393C				



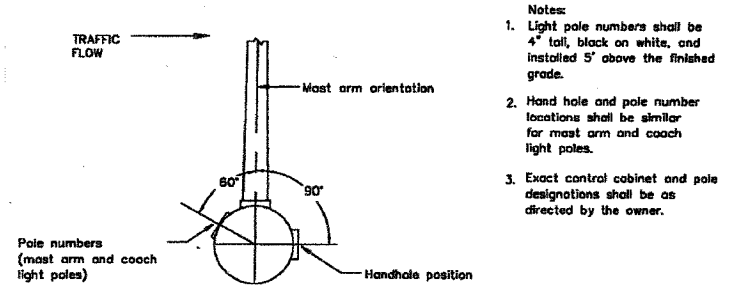
LIGHT FIXTURE DETAIL



POLE BASE WIRING DETAIL



**SPlicing ELECTRIC CABLES
BASIC MATERIALS AND METHODS**



POSITION OF HANDHOLE AND POLE NUMBERS

- Notes:
- Light pole numbers shall be 4" tall, black on white, and installed 5' above the finished grade.
 - Hand hole and pole number locations shall be similar for most arm and coach light poles.
 - Exact control cabinet and pole designations shall be as directed by the owner.

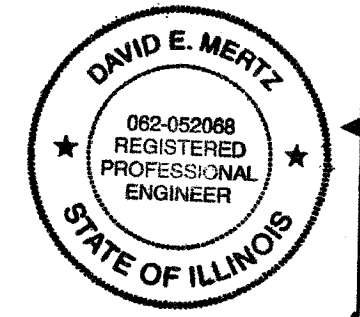
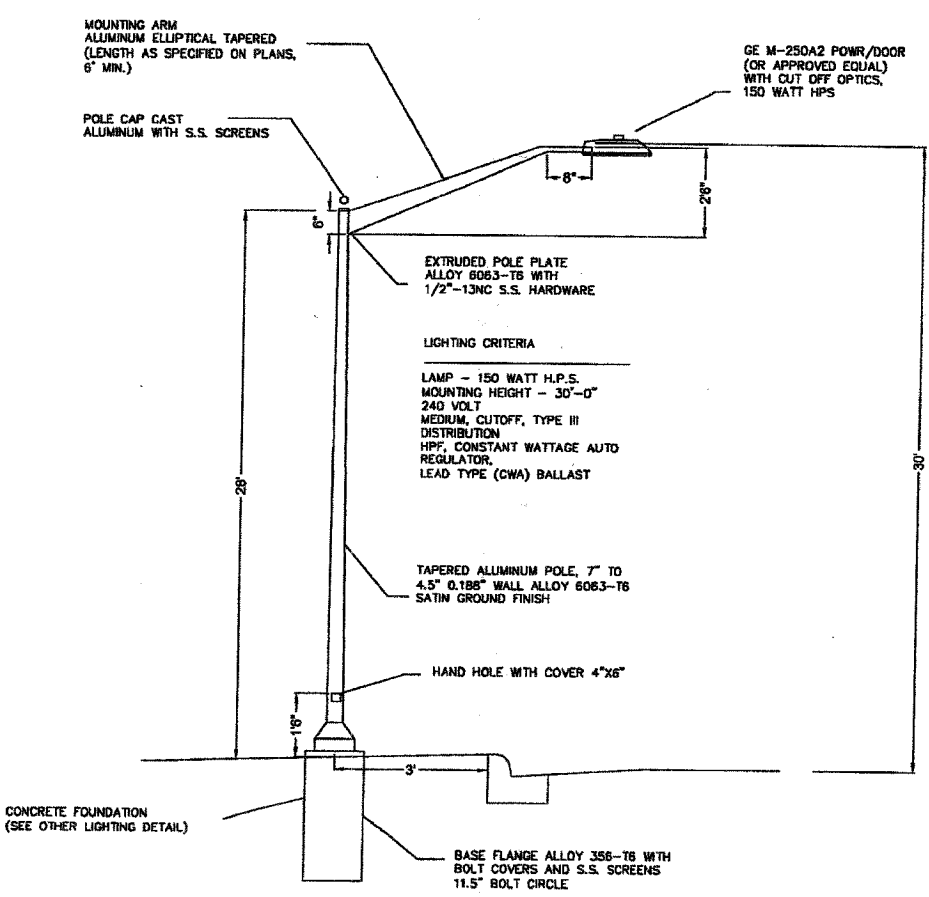
XX Control cabinet number
X Pole number

MAJOR STREETS WITH MAST ARMS

TYPE OF SOIL	DESIGN DEPTH		REINFORCEMENT IN FOUNDATION			
	SINGLE ARM D	TWIN ARM D	SINGLE ARM VERT. BARS	SPIRAL	TWIN ARM VERT. BARS	SPIRAL
SOFT CLAY	13'-0"	15'-0"	4-#6X12'-8"	#3X122'	4-#6X14'-8"	#3X141'
MEDIUM CLAY	9'-6"	10'-9"	4-#6X9'-0"	#3X90'	4-#6X10'-3"	#3X100'
STIFF CLAY	8'-0"	8'-0"	4-#6X7'-6"	#3X76'	4-#6X7'-6"	#3X76'
LOOSE SAND	9'-0"	10'-0"	4-#6X8'-6"	#3X85'	4-#6X9'-6"	#3X94'
MEDIUM SAND	8'-3"	9'-0"	4-#6X7'-9"	#3X78'	4-#6X8'-6"	#3X85'
DENSE SAND	8'-0"	9'-0"	4-#6X7'-5"	#3X76'	4-#6X8'-5"	#3X85'

NOTE: 1. Contractor at his option may substitute No.3 hoops at 12" on centers for spiral cage. 2. Contractor shall use the values for twin arm installation for this project.

LIGHT POLE FOUNDATION DESIGN TABLE



David E. Mertz

Burns & McDonnell SINCE 1934	
date 04/10/2007	detailed B.HAAS
designed D.MERTZ	checked F.ONOL



VILLAGE OF DOWNERS GROVE WOODWARD AVENUE PHOTOMETRICS DETAIL SHEET 2 OF 2	
project 45190	contract
drawing E15	rev. 0
sheet 15	of 16 sheets
file I:\DOWNERS_45190\CAD\ E15	

COPYRIGHT © 2007 BURNS AND MCDONNELL ENGINEERING COMPANY, INC.