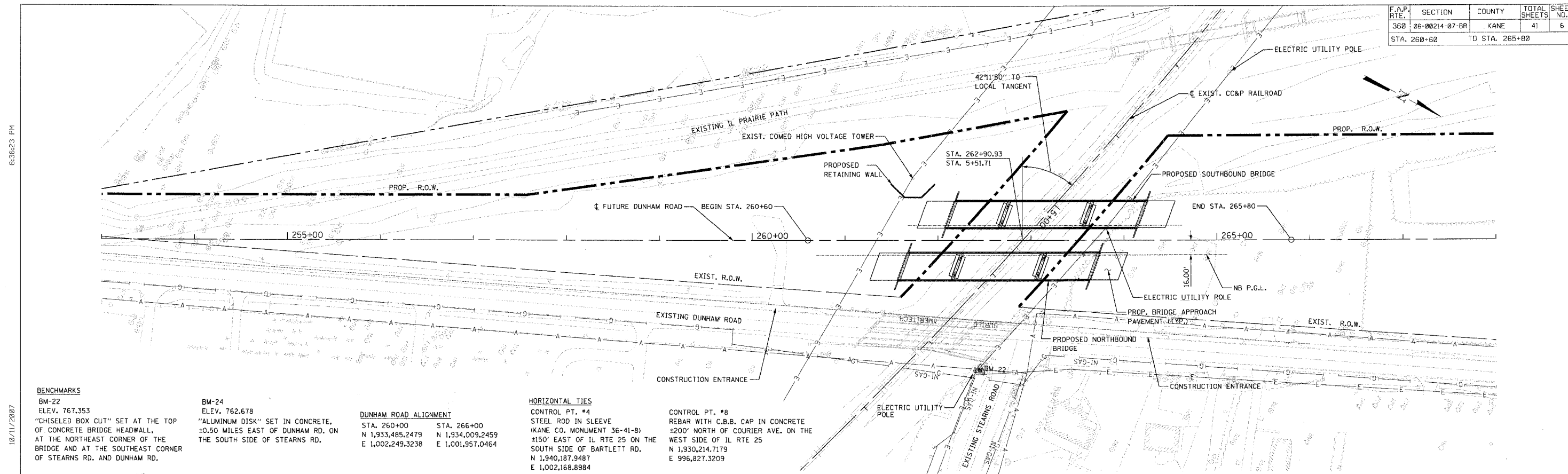


F.A.P. RTE.	SECTION	COUNTY	TOTAL SHEETS	SHEET NO.
368	06-00214-07-BR	KANE	41	6
STA. 260+00		TO STA. 265+00		



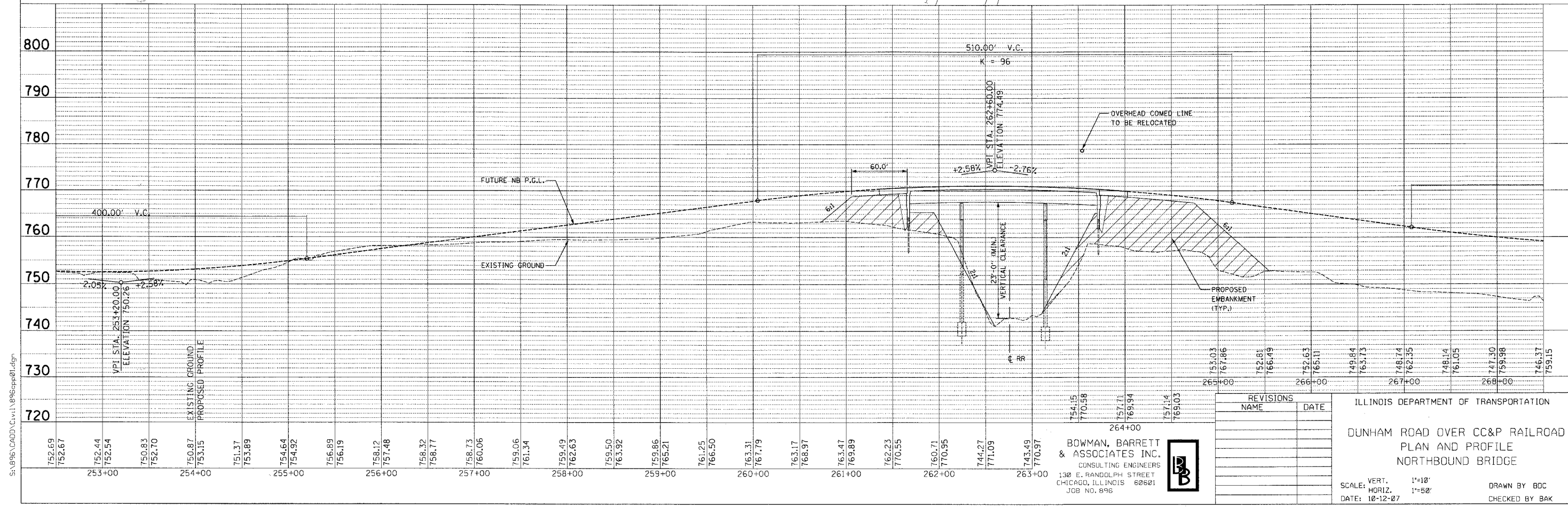
**BENCHMARKS**  
 BM-22  
 ELEV. 767.353  
 "CHISELED BOX CUT" SET AT THE TOP OF CONCRETE BRIDGE HEADWALL, AT THE NORTHEAST CORNER OF THE BRIDGE AND AT THE SOUTHEAST CORNER OF STEARNS RD. AND DUNHAM RD.

**BM-24**  
 ELEV. 762.678  
 "ALUMINUM DISK" SET IN CONCRETE, ±0.50 MILES EAST OF DUNHAM RD. ON THE SOUTH SIDE OF STEARNS RD.

**DUNHAM ROAD ALIGNMENT**  
 STA. 260+00    STA. 266+00  
 N 1,933,465.2479    N 1,934,009.2459  
 E 1,002,249.3238    E 1,001,957.0464

**HORIZONTAL TIES**  
 CONTROL PT. #4  
 STEEL ROD IN SLEEVE  
 (KANE CO. MONUMENT 36-41-B)  
 ±150' EAST OF IL RTE 25 ON THE SOUTH SIDE OF BARTLETT RD.  
 N 1,940,187.9487  
 E 1,002,168.8984

**CONTROL PT. #8**  
 REBAR WITH C.B.B. CAP IN CONCRETE  
 ±200' NORTH OF COURIER AVE. ON THE WEST SIDE OF IL RTE 25  
 N 1,930,214.7179  
 E 996,827.3209



**BOWMAN, BARRETT & ASSOCIATES INC.**  
 CONSULTING ENGINEERS  
 130 E. RANDOLPH STREET  
 CHICAGO, ILLINOIS 60601  
 JOB NO. 896



REVISIONS	
NAME	DATE

ILLINOIS DEPARTMENT OF TRANSPORTATION  
**DUNHAM ROAD OVER CC&P RAILROAD**  
 PLAN AND PROFILE  
 NORTHBOUND BRIDGE  
 SCALE: VERT. 1"=10'  
 HORIZ. 1"=50'  
 DATE: 10-12-07  
 DRAWN BY BDC  
 CHECKED BY BAK

6:36:23 PM

10/11/2007

S:\896\CADD\C.v1\896csp01.dgn