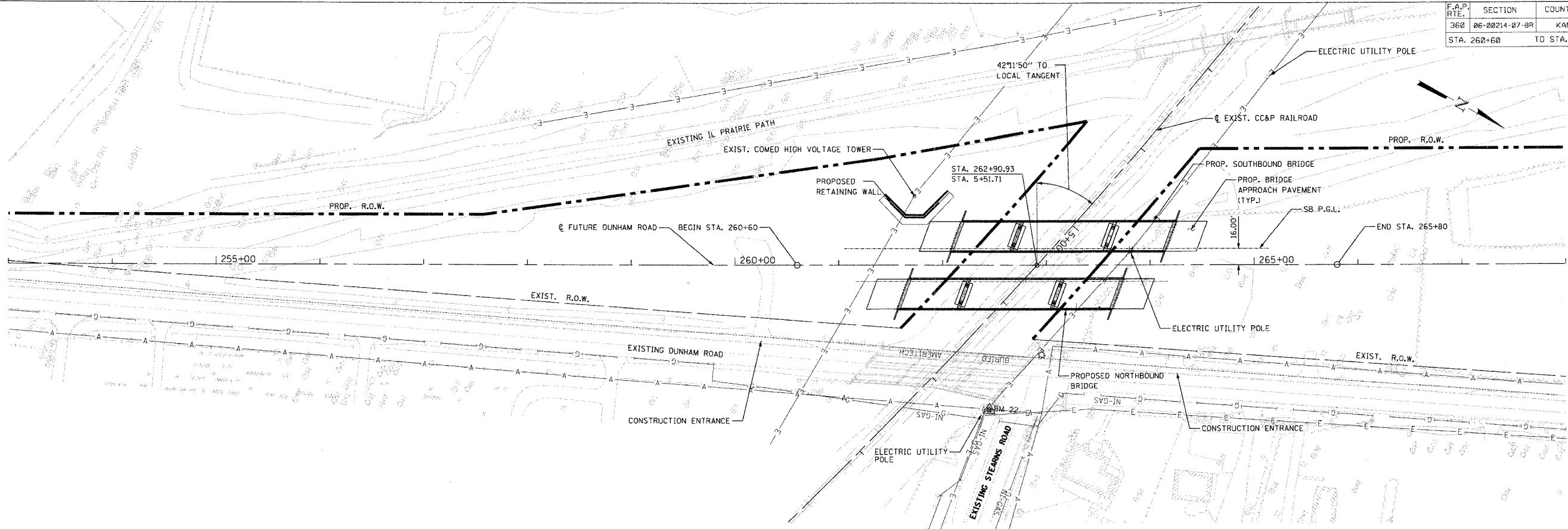


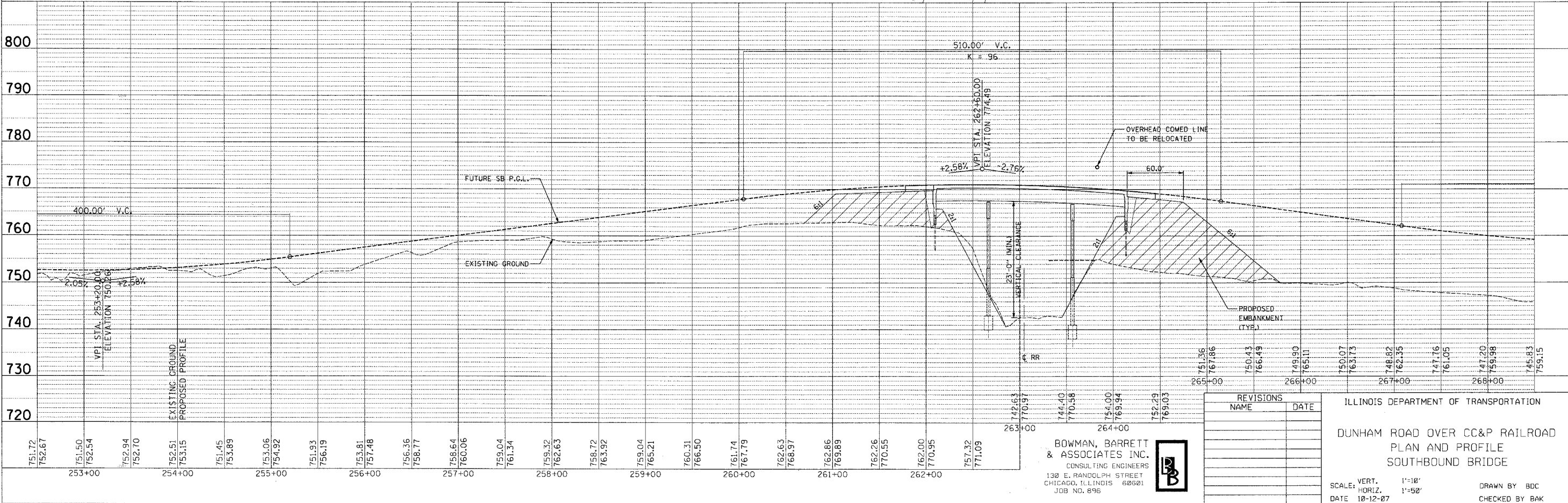
| F.A.P. RTE. | SECTION | COUNTY | TOTAL SHEETS | SHEET NO. |
|-------------|----------------|----------------|--------------|-----------|
| 360 | 06-00214-07-BR | KANE | 41 | 7 |
| STA. 260+60 | | TO STA. 265+80 | | |



5-18-08 PM

10/11/2007

S:\896\CAD\Civil\896\p02.dgn



| REVISIONS | NAME | DATE |
|-----------|------|------|
| | | |
| | | |
| | | |
| | | |
| | | |

BOWMAN, BARRETT & ASSOCIATES INC.
 CONSULTING ENGINEERS
 130 E. RANDOLPH STREET
 CHICAGO, ILLINOIS 60601
 JOB NO. 896



ILLINOIS DEPARTMENT OF TRANSPORTATION

**DUNHAM ROAD OVER CC&P RAILROAD
 PLAN AND PROFILE
 SOUTHBOUND BRIDGE**

SCALE: VERT. 1"=10'
 HORIZ. 1"=50'
 DATE 10-12-07
 DRAWN BY BDC
 CHECKED BY BAK