

GENERAL NOTES

Fasteners shall be AASHTO M164 Type 1, mechanically galvanized bolts in painted areas and M164 Type 3 in unpainted areas. Bolts 7/8 in. ϕ , holes 1 1/16 in. ϕ , unless otherwise noted.

Calculated weight of Structural Steel = 283,470 lbs.

All structural steel shall be AASHTO M 270 Grade 50W.

No field welding is permitted except as specified in the contract documents.

Reinforcement bars shall conform to the requirements of ASTM A 706 Gr 60 (IL Modified). See Special Provisions.

Reinforcement bars designated (E) shall be epoxy coated.

If the Contractor elects to use cantilever forming brackets on the exterior beams or girders, the brackets shall be placed at the same locations as required for the hardwood blocks in Article 503.06(b) of the Standard Specifications. If additional cantilever forming brackets are required, hardwood blocking shall be wedged between the exterior and first interior beam at each of these additional bracket locations.

Bearing seat surfaces shall be constructed or adjusted to their designated elevations within a tolerance of 1/8 inch (0.01 ft.). Adjustment shall be made either by grinding the surface or by shimming the bearings.

Structural steel shall only be painted for a distance equal to the depth of embedment into the concrete cap plus 3 inches. Those areas shall be primed in the shop with a Department approved zinc rich primer. No field painting shall be required. All structural steel shall be cleaned as specified in the Special Provision for "Surface Preparation and Painting Requirements for Weathering Steel".

The embankment configuration shown shall be the minimum that must be placed and compacted prior to construction of the abutments.

The Contractor shall drive test piles to 110% of the nominal required bearing specified in production locations at substructures specified or approved by the Engineer before ordering the remainder of piles.

STATE OF ILLINOIS
DEPARTMENT OF TRANSPORTATION

INDEX OF STRUCTURAL SHEETS

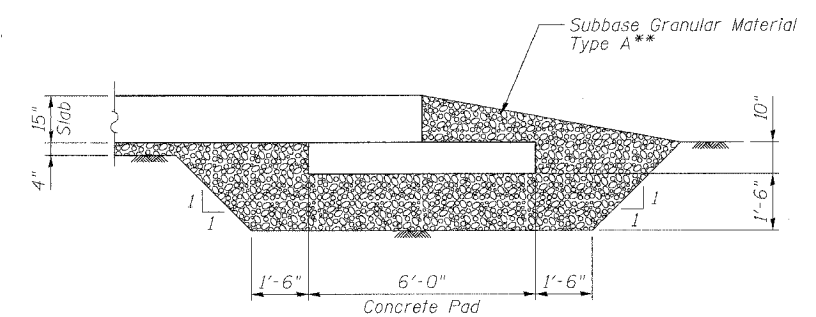
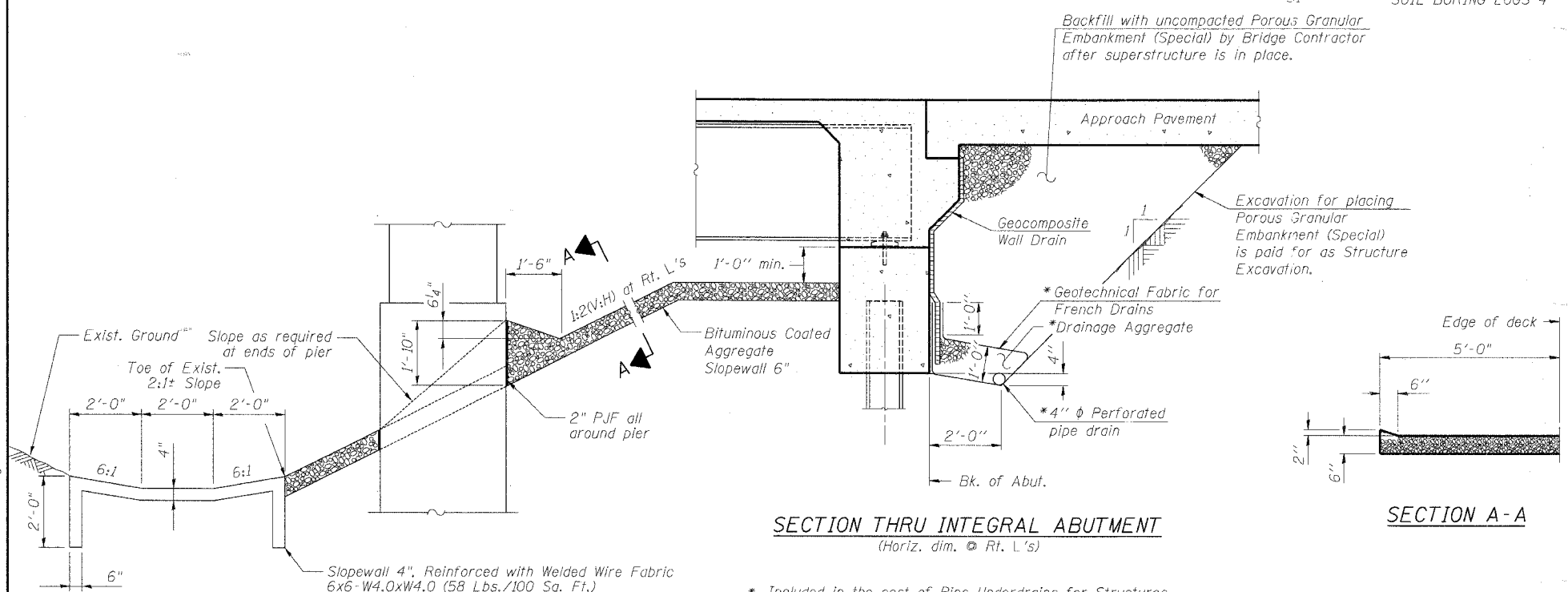
SHEET NO.	TITLE
1	GENERAL PLAN AND ELEVATION
2	GENERAL NOTES & TOTAL BILL OF MATERIAL
3	SUBSTRUCTURE LAYOUT
4	TOP OF SLAB ELEVATION LAYOUT - S.B.
5	TOP OF SLAB ELEVATION LAYOUT - N.B.
6	TOP OF SLAB ELEVATIONS
7	SUPERSTRUCTURE PLAN AND CROSS-SECTION
8	ABUTMENT DIAPHRAGM DETAILS
9	SUPERSTRUCTURE DETAILS
10	DRAINAGE SCUPPER, DS-II
11	FRAMING PLAN - S.B.
12	FRAMING PLAN - N.B.
13	BEAM DETAILS
14	BEARING DETAILS
15	SOUTH ABUTMENT - S.B.
16	SOUTH ABUTMENT - N.B.
17	NORTH ABUTMENT - S.B.
18	NORTH ABUTMENT - N.B.
19	H-PILE DETAILS
20	PIER 1 DETAILS - S.B.
21	PIER 1 DETAILS - N.B.
22	PIER 2 DETAILS - S.B.
23	PIER 2 DETAILS - N.B.
24	MSE RETAINING WALL
25	TOP OF SOUTH APPROACH SLAB ELEVATIONS
26	TOP OF NORTH APPROACH SLAB ELEVATIONS
27	BAR SPLICER ASSEMBLY DETAILS
28	SOIL BORING LOGS 1
29	SOIL BORING LOGS 2
30	SOIL BORING LOGS 3
31	SOIL BORING LOGS 4

TOTAL BILL OF MATERIAL

ITEM	UNIT	SUPER	SUB	TOTAL
Removal and Disposal of Unsuitable Material	Cu. Yd.		700	700
Porous Granular Embankment (Special)	Cu. Yd.		212	212
Bituminous Coated Aggregate Slopewall 6"	Sq. Yd.		2135	2135
Slopewall 4"	Sq. Yd.		176	176
Structure Excavation	Cu. Yd.		927	927
Concrete Structures	Cu. Yd.		306.1	306.1
Concrete Superstructure	Cu. Yd.	482		482
Bridge Deck Grooving	Sq. Yd.	1196		1196
Concrete Encasement	Cu. Yd.		8.4	8.4
Protective Coat	Sq. Yd.	1634		1634
Furnishing and Erecting Structural Steel	L. Sum	1		1
Stud Shear Connectors	Each	5712		5712
Reinforcement Bars, Epoxy Coated	Pound	105,910	30,480	136,390
Bar Splicers	Each	116		116
Furnishing Steel Piles HP12x53	Foot		1245	1245
Driving Piles	Foot		1245	1245
Test Pile Steel HP12x53	Each		4	4
Pile Shoes	Each		24	24
Name Plates	Each	2		2
Elastomeric Bearing Assembly, Type I	Each	8		8
Anchor Bolt 1" ϕ	Each	32		32
Anchor Bolt 1 1/2" ϕ	Each	32		32
Geocomposite Wall Drain	Sq. Yd.		115	115
Pipe Underdrains for Structures, 4"	Foot		276	276
Drainage Scupper, DS-II	Each	2		2
Mechanically Stabilized Earth Retaining Wall	Sq. Ft.		663	663
Protective Shield	Sq. Yd.	702		702

*** Sheeting is not required when excavating for the pier footings. If the Contractor chooses to install sheeting as part of his means and methods, the cost of such sheeting shall be included in the cost of Structure Excavation as noted in Section 502 of the Standard Specifications.

6:56:10 PM 10/11/2007 SA:\996\CADD\Structural\SHEETS\896SGN01.dgn



END OF APPROACH PAVEMENT TREATMENT

** Included in the cost of Bridge Approach Pavement
Note: Construct Approach Pavement according to Highway Standard 420401 except as noted.

* Included in the cost of Pipe Underdrains for Structures.
Note: All drainage system components shall extend to 2'-0" from the end of each wingwall except an outlet pipe shall extend until intersecting with the side slopes. The pipes shall drain into concrete headwalls. (See Article 601.05 of the Standard Specifications and Highway Standard 601101).

DESIGNED	BAK
CHECKED	SF
DRAWN	MTR
CHECKED	BAK

BOWMAN, BARRETT & ASSOCIATES INC
CONSULTING ENGINEERS
Chicago, Illinois
312.228.0100
www.bbainc.com
Job No. 896

GENERAL NOTES &
TOTAL BILL OF MATERIAL
DUNHAM ROAD OVER
THE CC&P RAILROAD
SECTION 06-00214-07-BR
KANE COUNTY
STATION 262+90.93
STR. NO. 045-3169 (NB) / 045-3170 (SB)