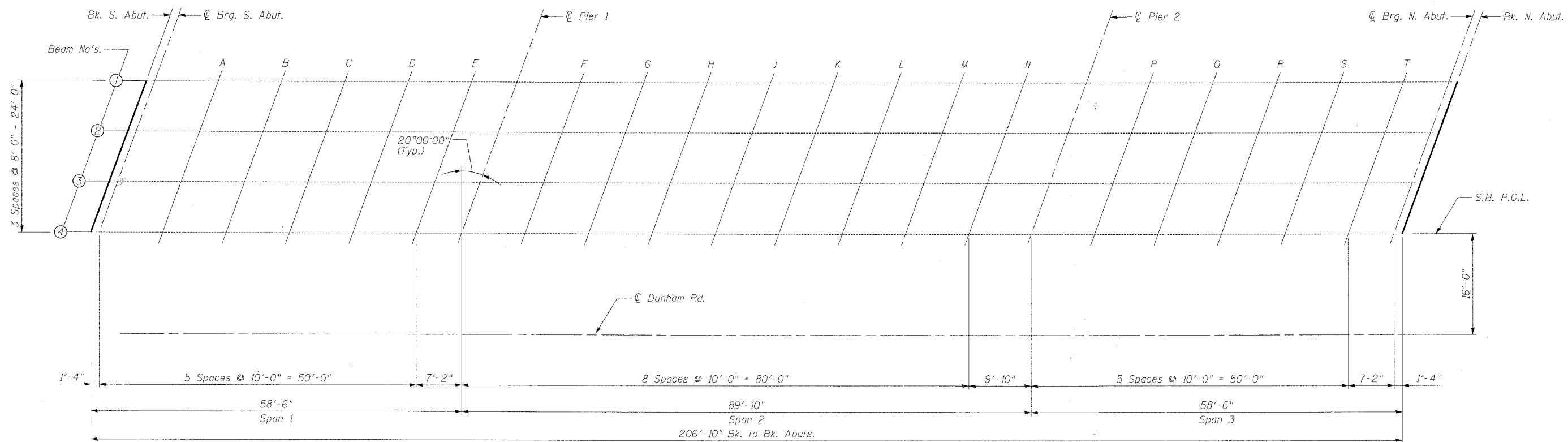


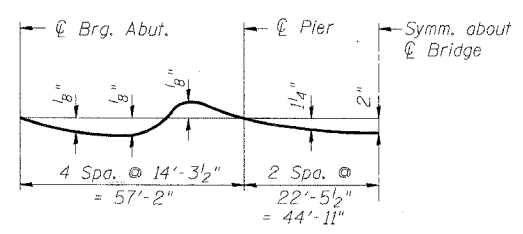
STATE OF ILLINOIS
DEPARTMENT OF TRANSPORTATION

ROUTE NO.	SECTION	COUNTY	TOTAL SHEETS	SHEET NO.	SHEET NO. 4 OF 31 SHEETS
FAP 360	*	KANE	41	14	
FED. ROAD DIST. NO. 7	ILLINOIS	FED. AID PROJECT			

Contract # 83951 * 06-00214-07-BR



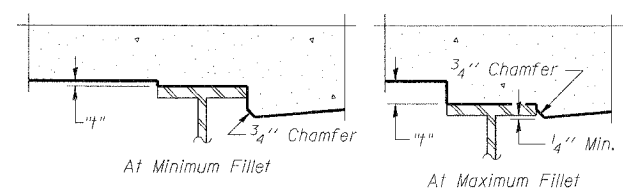
PLAN



DEAD LOAD DEFLECTION DIAGRAM

(Includes weight of concrete only.)

Note:
The above deflections are not to be used in the field if the engineer is working from the grade elevations adjusted for dead load deflections shown.



To determine "t": After all structural steel has been erected, elevations of the top flanges of the beams shall be taken at the intervals shown. These elevations subtracted from the "Theoretical Grade Elevations Adjusted for Dead Load Deflection", minus slab thickness, equals the fillet heights "t" above top flange of beams.

FILLET HEIGHTS

DESIGNED	SLV
CHECKED	BAK
DRAWN	MTR
CHECKED	SF

BOWMAN, BARRETT & ASSOCIATES INC.
CONSULTING ENGINEERS
Chicago, Illinois
312.228.0100
www.bbandainc.com
Job No. 896

TOP OF SLAB ELEVATION LAYOUT - S.B.
DUNHAM ROAD OVER
THE CC&P RAILROAD
SECTION 06-00214-07-BR
KANE COUNTY
STATION 262+90.93
STR. NO. 045-3169 (NB) / 045-3170 (SB)

6:59:42 PM
10/11/2007

S:\896\CADD\Structural\Sheets\896SSSECI.dgn