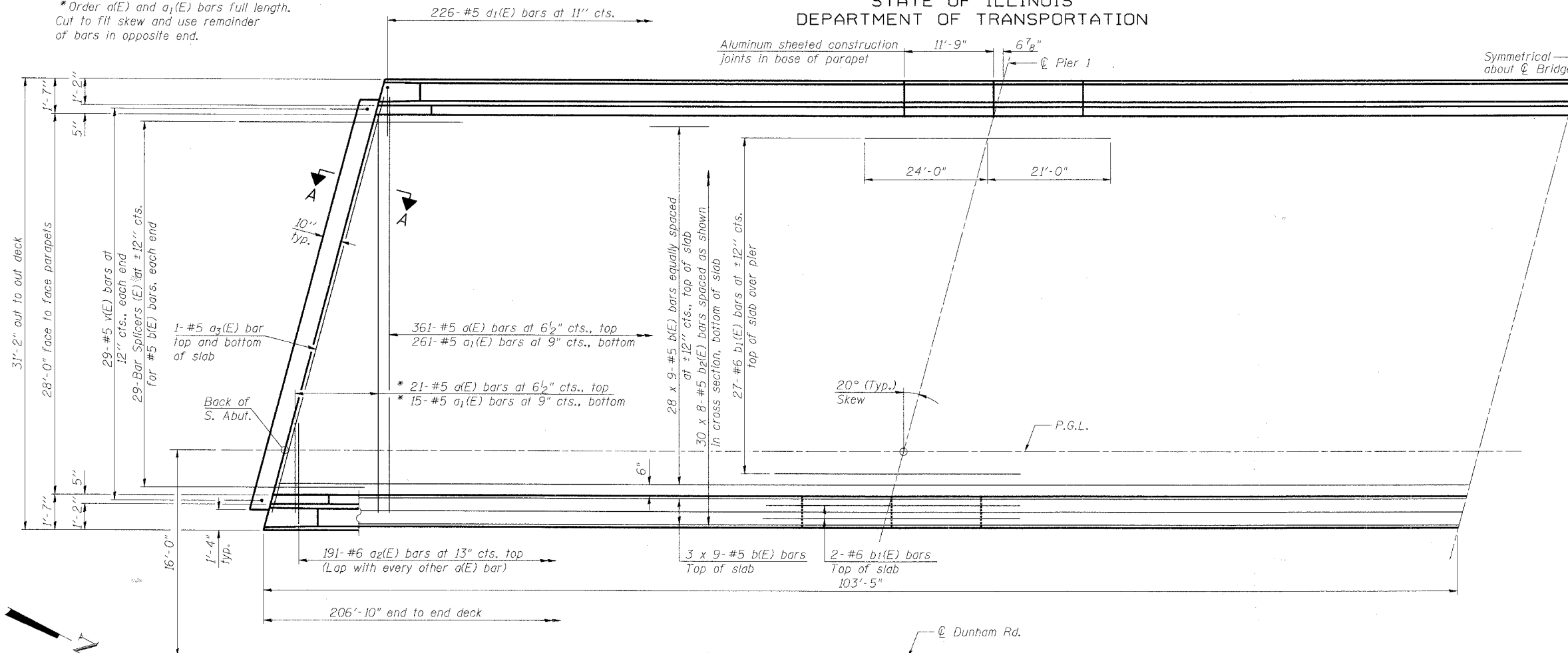


STATE OF ILLINOIS  
DEPARTMENT OF TRANSPORTATION

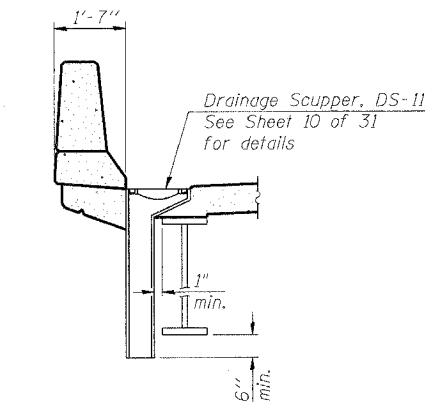
|                       |         |                  |                   |       |                |
|-----------------------|---------|------------------|-------------------|-------|----------------|
| ROUTE NO.             | SECTION | COUNTY           | DATE              | SHEET | SHEET NO. 7 OF |
| FAP 360               | *       | KANE             | 41                | 17    | 31 SHEETS      |
| FED. ROAD DIST. NO. 7 |         | ILLINOIS         | FED. ROAD PROJECT |       |                |
| Contract # 83951      |         | * 06-00214-07-BR |                   |       |                |

\* Order a(E) and a<sub>1</sub>(E) bars full length.  
Cut to fit skew and use remainder  
of bars in opposite end.

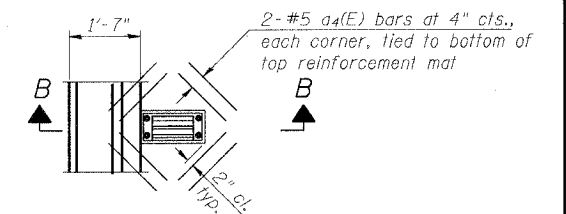


**PARTIAL PLAN**

(South half of Southbound Bridge shown,  
remaining portions similar)



**SECTION B-B**



**PLAN AT SCUPPER**

Note:  
Cut longitudinal reinforcement to  
clear drainage scuppers.

**MIN. BAR LAP**

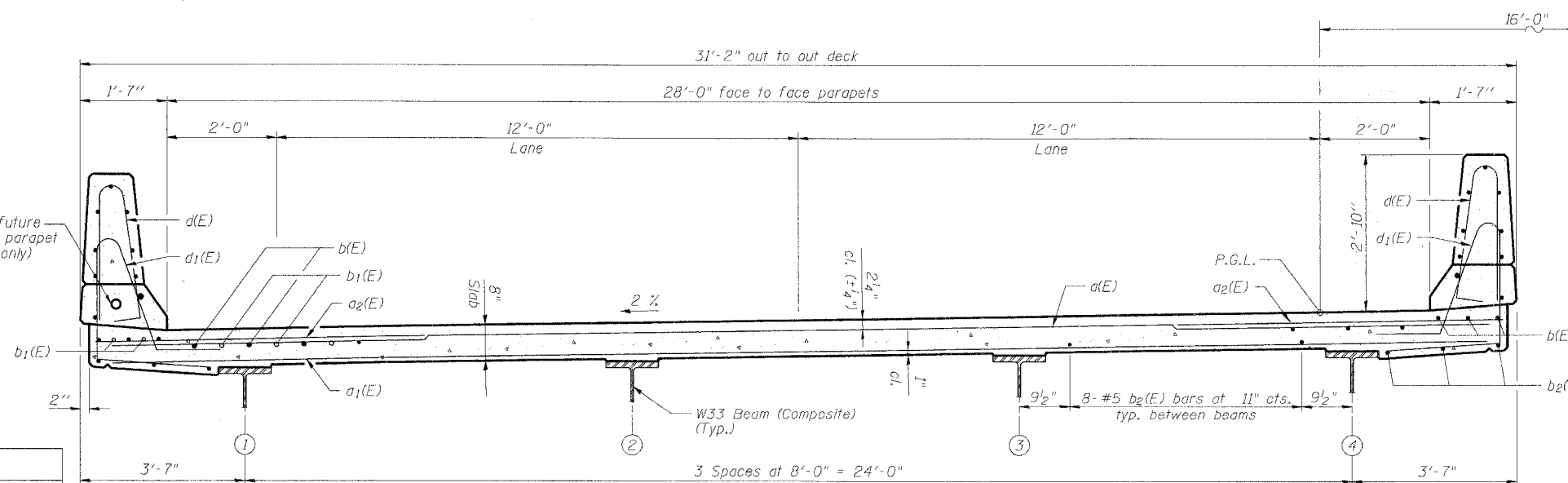
#5 bar = 2'-2"

Notes:  
See Sheet 9 of 31 for superstructure details,  
parapet reinforcement and Bill of Material.  
Bars indicated thus 20 x 3-#5 etc. Indicates  
20 lines of bars with 3 lengths per line.  
See Sheet 8 of 31 for Section A-A.  
See Sheet 1 of 31 for light pole support  
and drainage scupper stations.

**SUPERSTRUCTURE PLAN  
AND CROSS-SECTION  
DUNHAM ROAD OVER  
THE CC&P RAILROAD  
SECTION 06-00214-07-BR**

KANE COUNTY  
STATION 262+90.93

STR. NO. 045-3169 (NB) / 045-3170 (SB)



**CROSS SECTION**  
(Looking Upstation)

|          |     |
|----------|-----|
| DESIGNED | BAK |
| CHECKED  | SF  |
| DRAWN    | MTR |
| CHECKED  | BAK |

BOWMAN, BARRETT & ASSOCIATES INC  
CONSULTING ENGINEERS  
Chicago, Illinois  
312.228.0100  
www.bbainc.com  
Job No. 896

7:00:28 PM

10/11/2007

S:\896\CADD\Structural\SHEETS\896SSP01.dgn