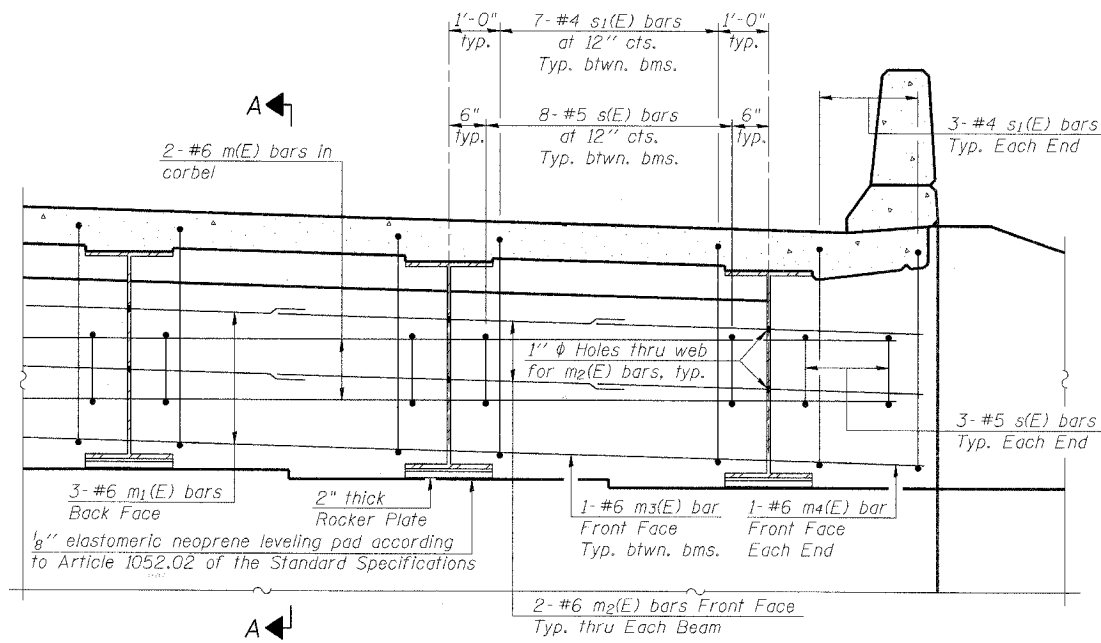
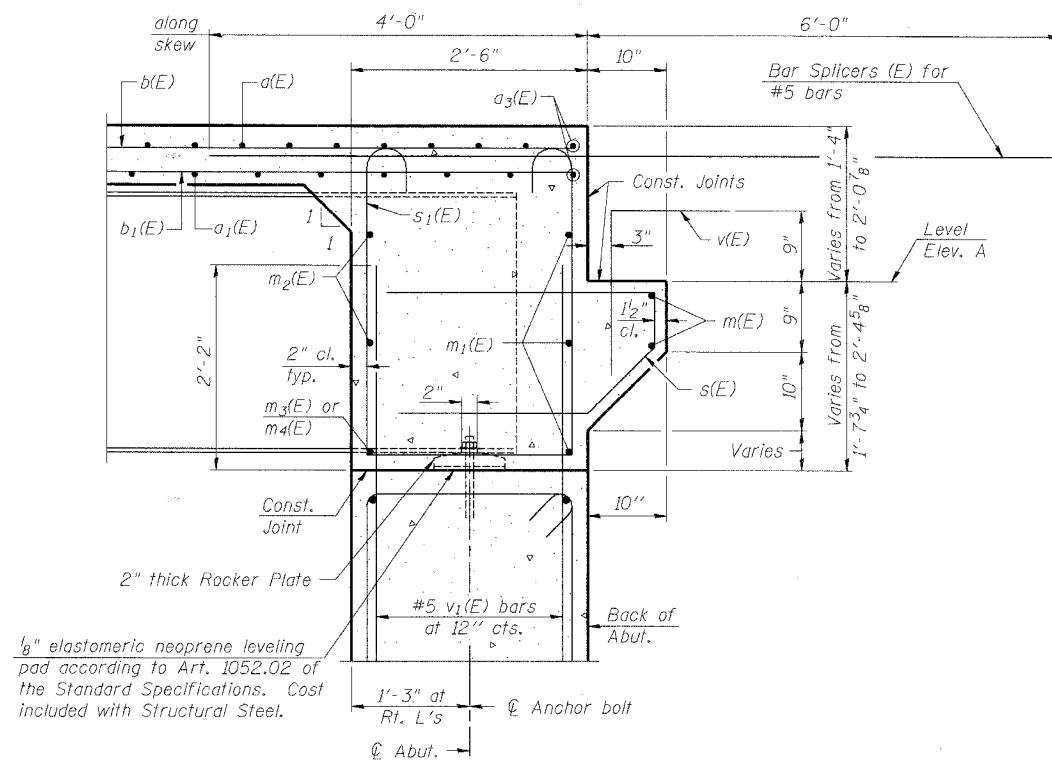


STATE OF ILLINOIS
DEPARTMENT OF TRANSPORTATION

ROUTE NO.	SECTION	COUNTY	POST MILES	SHEET	SHEET NO. 8 OF 31 SHEETS
FAP 360	*	KANE	41	18	
FED. ROAD DIST. NO. 7	ILLINOIS	FED. AID PROJECT	Contract # 83951 * 06-00214-07-BR		



DIAPHRAGM ELEVATION AT ABUTMENT



SECTION A-A

Dimensions at right angles to abutment, except as shown.

DESIGNED	BAK
CHECKED	SF
DRAWN	MTR
CHECKED	BAK

Notes:
Reinforcement bars in diaphragm are billed with superstructure on Sheet 9 of 31.
Concrete in diaphragm is included with Concrete Superstructure on Sheet 9 of 31.
For details of bars s(E) & s1(E) see Sheet 9 of 31.
The s(E) and s1(E) bars shall be placed parallel to the beams. Spacing for these bars shall be at right angles to the beams.

MIN. BAR LAP

#6 bar = 2'-9"

ABUTMENT DIAPHRAGM DETAILS

DUNHAM ROAD OVER

THE CC&P RAILROAD

SECTION 06-00214-07-BR

KANE COUNTY

STATION 262+90.93

STR. NO. 045-3169 (NB) / 045-3170 (SB)

BOWMAN, BARRETT & ASSOCIATES INC
CONSULTING ENGINEERS
Chicago, Illinois
312.228.0100
www.bbandainc.com
Job No. 896



6:54:40 PM

10/11/2007

S:\896\CADD\Structural\Sheets\896SDD01.dgn