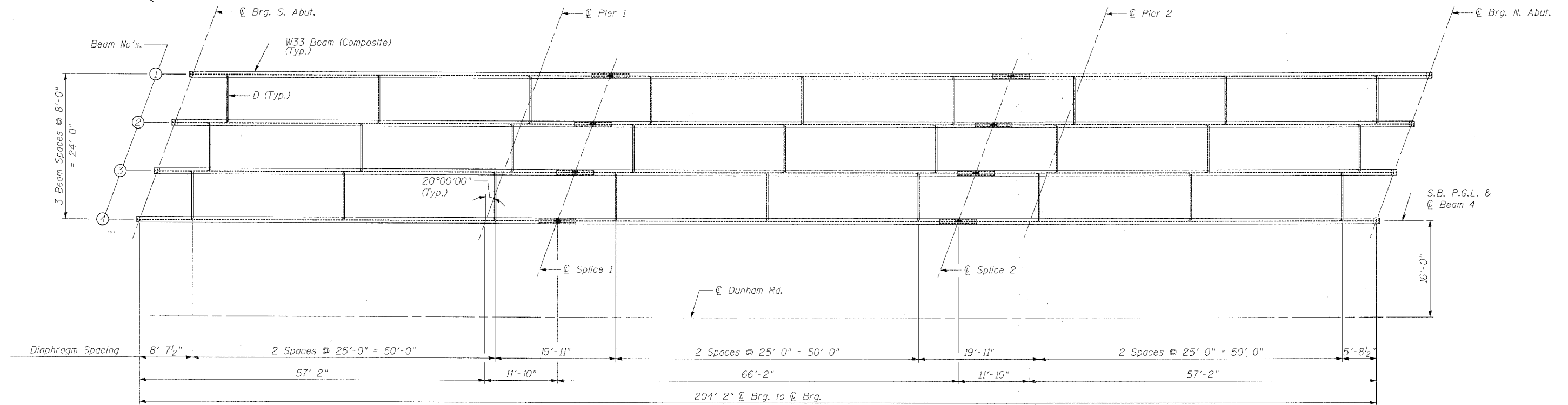


STATE OF ILLINOIS
DEPARTMENT OF TRANSPORTATION

ROUTE NO.	SECTION	COUNTY	STATION	SHEET NO.	SHEET NO. 11 OF 31 SHEETS
FAP 360	*	KANE	41	21	
FED. ROAD DIST. NO. 7		ILLINOIS	FED. AID PROJECT-		
		Contract # 83951 * 06-00214-07-BR			

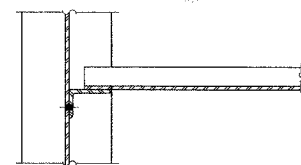


S.B. FRAMING PLAN

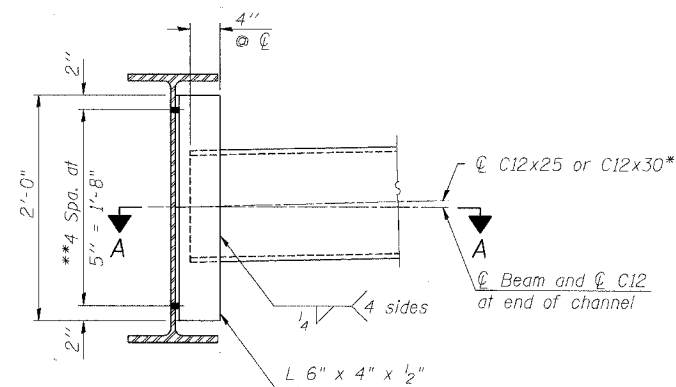
TOP OF BEAM ELEVATIONS

(For fabrication use only)

Beam No.	℄ Brg. S. Abut.	℄ Pier 1	℄ Splice 1	℄ Splice 2	℄ Pier 2	℄ Brg. N. Abut.
1	769.84	769.77	769.76	769.28	769.12	768.35
2	769.99	769.94	769.93	769.47	769.32	768.57
3	770.13	770.11	770.10	769.66	769.51	768.78
4	770.28	770.27	770.27	769.85	769.70	768.99



SECTION A-A



DIAPHRAGM D

DESIGNED	BAK
CHECKED	IYL
DRAWN	MTR
CHECKED	SF

* Alternate channels are permitted to facilitate material acquisition. Calculated weight of structural steel is based on the lighter section.
** 3/4" φ HS bolts, 15/16" φ holes

Notes:

Two hardened washers required for each set of oversized holes.

All cross frames or diaphragms shall be installed as steel is erected and secured with erection pins and bolts except as otherwise noted. Individual cross frames or diaphragms at supports may be temporarily disconnected to install bearing anchor rods.

BOWMAN, BARRETT & ASSOCIATES INC.
CONSULTING ENGINEERS
Chicago, Illinois
312.228.0100
www.bbandainc.com
Job No. 896

FRAMING PLAN - S.B.
DUNHAM ROAD OVER
THE CC&P RAILROAD
SECTION 06-00214-07-BR
KANE COUNTY
STATION 262+90.93
STR. NO. 045-3169 (NB) / 045-3170 (SB)

6:55:26 PM

10/11/2007

S:\896\CADD\Structural\Sheets\896SF01.dgn