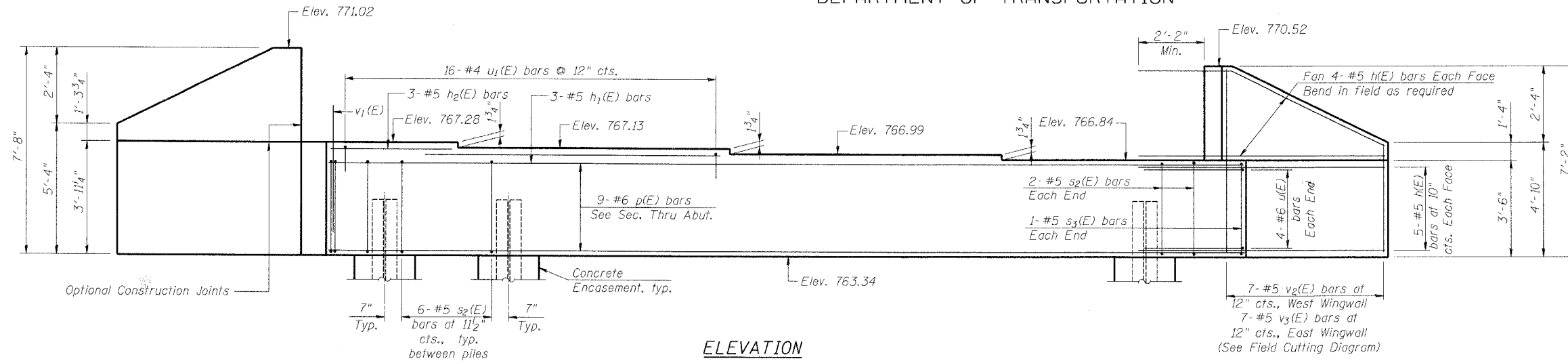
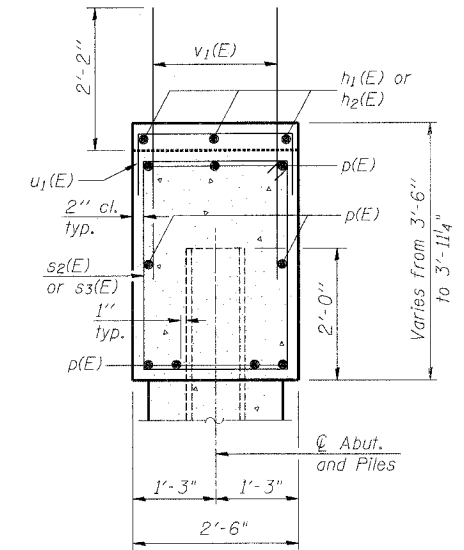


STATE OF ILLINOIS
DEPARTMENT OF TRANSPORTATION

ROUTE NO.	SECTION	COUNTY	SHEETS	SHEET	SHEET NO. 15 OF 31 SHEETS
FAP 360	*	KANE	41	25	
FED. ROAD DIST. NO. 7		ILLINOIS	FED. AID PROJECT		Contract # 83951 * 06-00214-07-BR



ELEVATION



SEC. THRU ABUT.
(Looking West)

Notes: Pour steps monolithically with cap.

MIN. BAR LAP

- #5 - 2'-2"
- #6 - 2'-7"

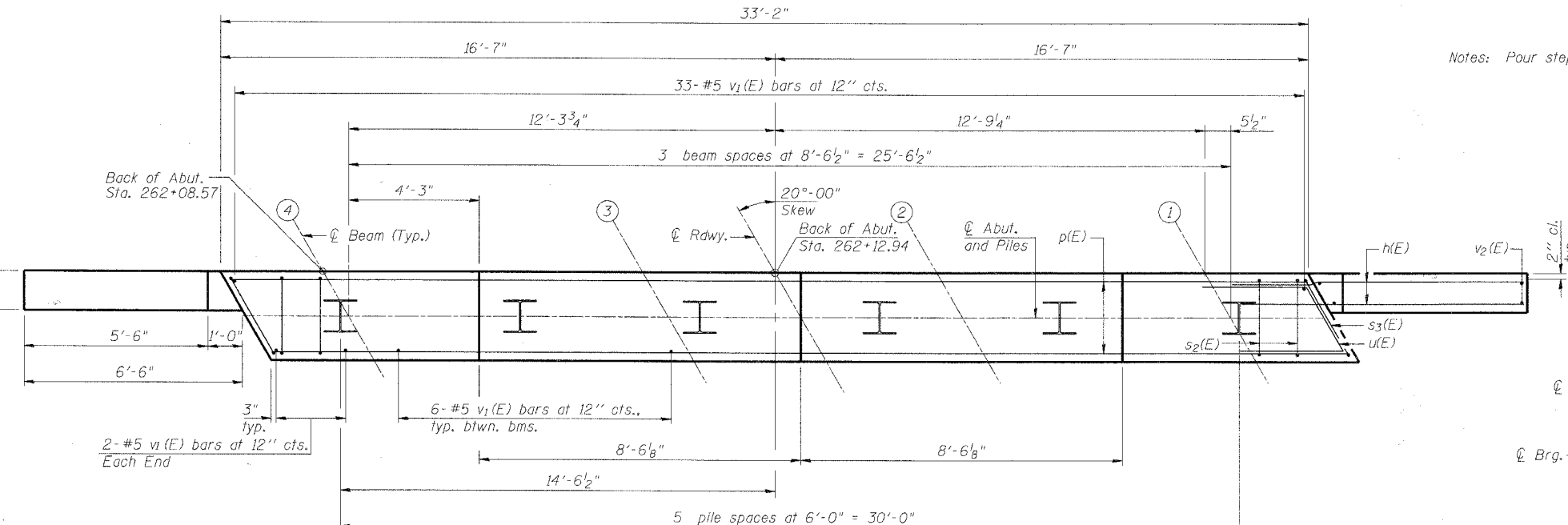
BILL OF MATERIAL

Bar	No.	Size	Length	Shape
h(E)	36	#5	8'-9"	—
h1(E)	3	#5	11'-0"	—
h2(E)	3	#5	7'-3"	—
p(E)	3	#6	32'-9"	—
s2(E)	34	#5	11'-7"	□
s3(E)	2	#5	11'-11"	□
u(E)	8	#6	7'-4"	—
u1(E)	16	#4	5'-8"	—
v1(E)	55	#5	4'-4"	—
v2(E)	7	#5	6'-9"	—
v3(E)	7	#5	7'-6"	—
Structure Excavation			Cu. Yd.	50
Concrete Structures			Cu. Yd.	14.4
Reinforcement Bars, Epoxy Coated			Pound	1,470
Furnishing Steel Piles HP12x53			Foot	335
Driving Piles			Foot	335
Test Pile Steel HP12x53			Each	1
Concrete Encasement			Cu. Yd.	2.1
Pile Shoes			Each	6

For details of piles and Concrete Encasement, see Sheet 19 of 31.

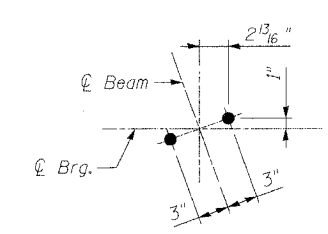
SOUTH ABUTMENT - S.B.
DUNHAM ROAD OVER
THE CC&P RAILROAD
SECTION 06-00214-07-BR
KANE COUNTY
STATION 262+90.93

STR. NO. 045-3169 (NB) / 045-3170 (SB)



PLAN

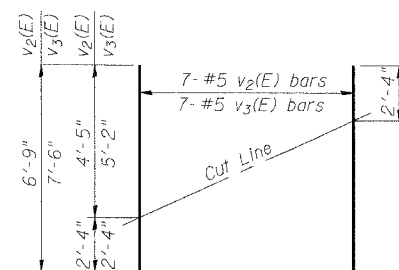
ANCHOR BOLT LAYOUT



PILE DATA

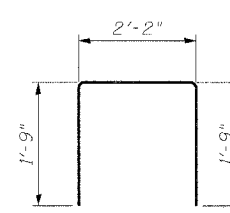
Type: Steel HP12x53 with Pile Shoes
Nominal Required Bearing: 300 kips
Allowable Resistance Available: 100 kips
Est. Length: 67'
No. Production Piles: 5
No. Test Piles: 1

DESIGNED SF	
CHECKED BAK	
DRAWN MTR	
CHECKED SF	

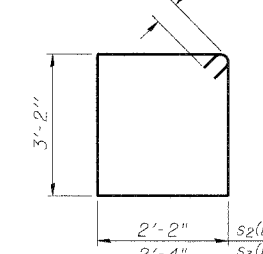


FIELD CUTTING DIAGRAM

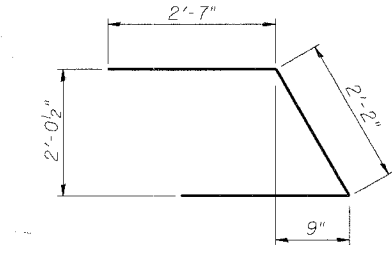
Order v2(E) & v3(E) full length. Cut as shown and use remainder of bars in opposite face.



BAR u1(E)



BARS s2(E) & s3(E)



BAR u(E)

BOWMAN, BARRETT & ASSOCIATES INC.
CONSULTING ENGINEERS
Chicago, Illinois
312.228.0100
www.bbandainc.com
Job No. 896

6:52:14 PM

10/11/2007

S:\896\CADD\Structural\Sheets\896SAB03.dgn