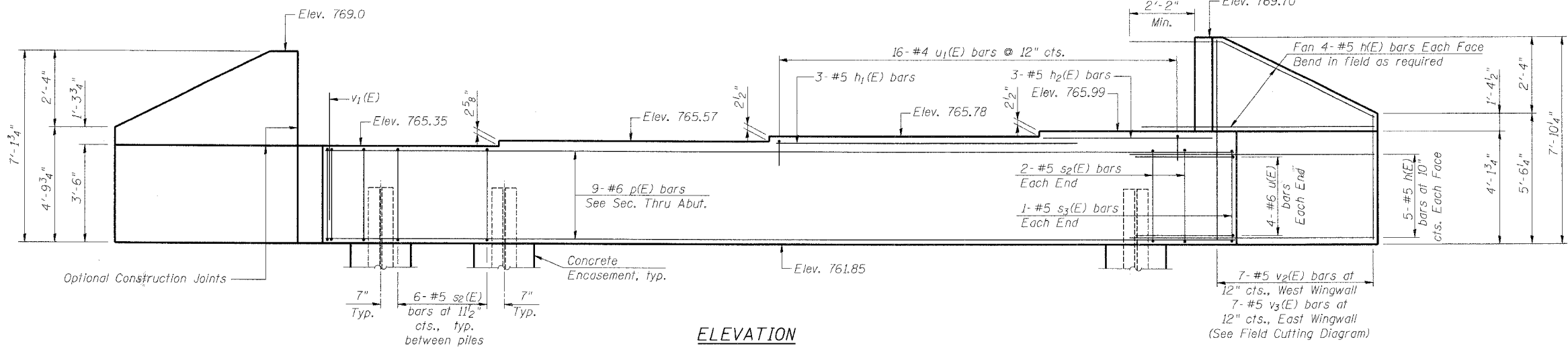


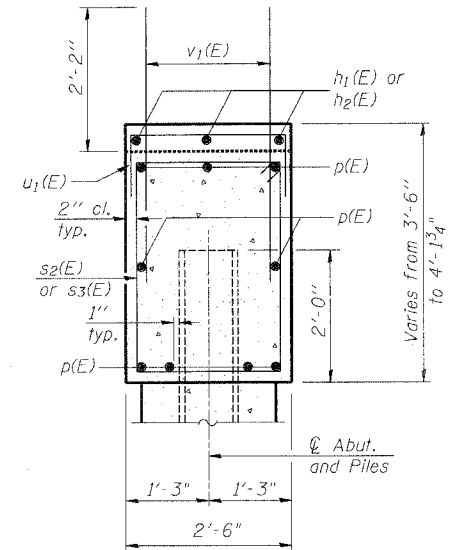
STATE OF ILLINOIS
DEPARTMENT OF TRANSPORTATION

ROUTE NO.	SECTION	COUNTY	SHEETS	SHEET	SHEET NO. 17 OF 31 SHEETS
FAP 360	*	KANE	41	27	
FED. ROAD DIST. NO. 7 ILLINOIS FED. AID PROJECT					

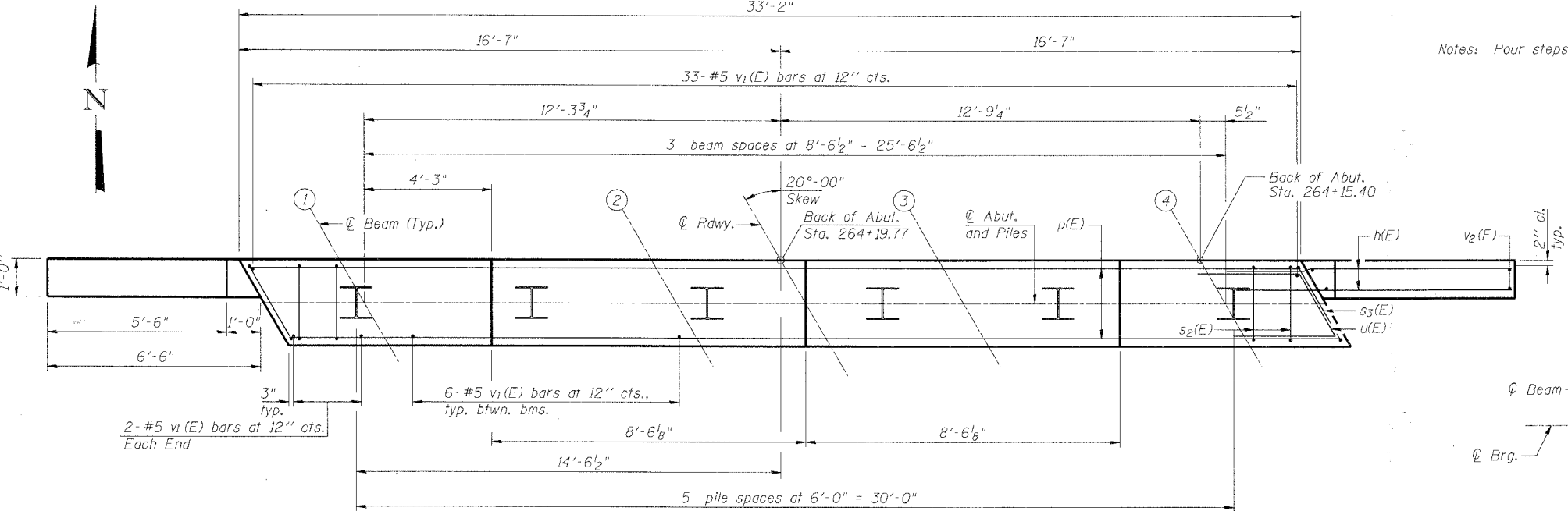
Contract # 83951 * 06-00214-07-BR



ELEVATION



SEC. THRU ABUT.
(Looking West)

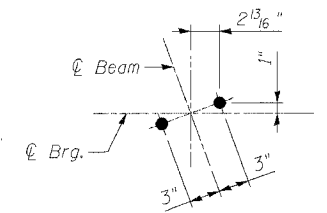


PLAN

Notes: Pour steps monolithically with cap.

MIN. BAR LAP

- #5 - 2'-2"
- #6 - 2'-7"



ANCHOR BOLT LAYOUT

BILL OF MATERIAL

Bar No.	Size	Length	Shape
h(E)	36 #5	8'-9"	—
h1(E)	3 #5	11'-0"	—
h2(E)	3 #5	7'-3"	—
p(E)	3 #6	32'-9"	—
s2(E)	34 #5	11'-7"	□
s3(E)	2 #5	11'-11"	□
u(E)	8 #6	7'-4"	┘
u1(E)	16 #4	5'-8"	┘
v1(E)	55 #5	4'-4"	—
v2(E)	7 #5	6'-9"	—
v3(E)	7 #5	7'-6"	—

Structure Excavation	Cu. Yd.	50
Concrete Structures	Cu. Yd.	14.8
Reinforcement Bars, Epoxy Coated	Pound	1,470
Furnishing Steel Piles HP12x53,	Foot	315
Driving Piles	Foot	315
Test Pile Steel HP12x53	Each	1
Concrete Encasement	Cu. Yd.	2.1
Pile Shoes	Each	6

For details of piles and Concrete Encasement, see Sheet 19 of 31.

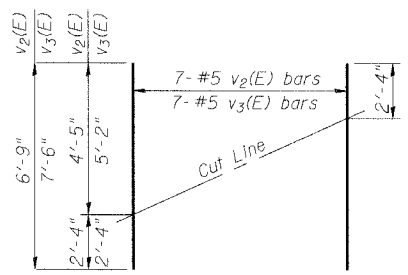
NORTH ABUTMENT - S.B.
DUNHAM ROAD OVER
THE CC&P RAILROAD
SECTION 06-00214-07-BR
KANE COUNTY
STATION 262+90.93

STR. NO. 045-3169 (NB) / 045-3170 (SB)

PILE DATA

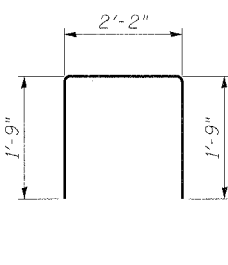
Type: Steel HP12x53 with Pile Shoes
Nominal Required Bearing: 300 kips
Allowable Resistance Available: 100 kips
Est. Length: 63'
No. Production Piles: 5
No. Test Piles: 1

DESIGNED	SF
CHECKED	BAK
DRAWN	MTR
CHECKED	SF

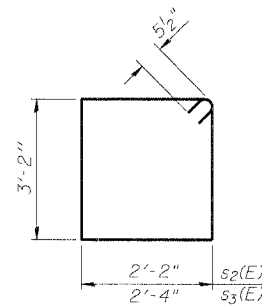


FIELD CUTTING DIAGRAM

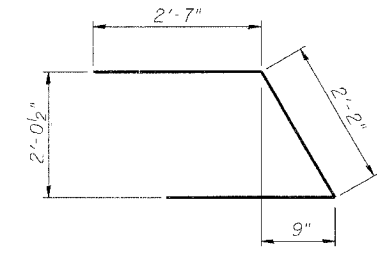
Order v2(E) & v3(E) full length. Cut as shown and use remainder of bars in opposite face.



BAR u1(E)



BARS s2(E) & s3(E)



BAR u(E)

BOWMAN, BARRETT & ASSOCIATES INC.
CONSULTING ENGINEERS
Chicago, Illinois
312.228.0100
www.bbandainc.com
Job No. 896

6:51:41 PM

10/11/2007

S:\896\CADD\Structure\Drawn\Sheets\896SAB01.dgn