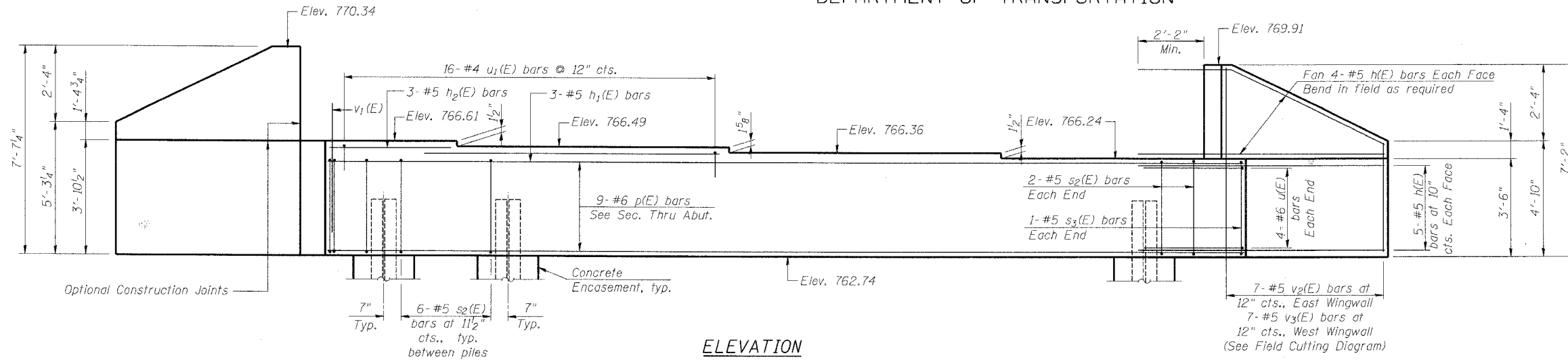
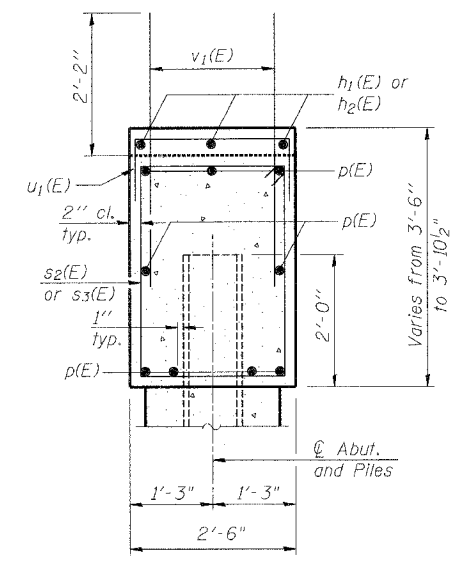


STATE OF ILLINOIS  
DEPARTMENT OF TRANSPORTATION

ROUTE NO.	SECTION	COUNTY	SHEETS	SHEET NO.	SHEET NO. OF
FAP 360	*	KANE	41	28	31 SHEETS
FED. ROAD DIST. NO. 7		ALLIANCE		FED. AID PROJECT	
Contract # 83951		* 06-00214-07-BR			



ELEVATION

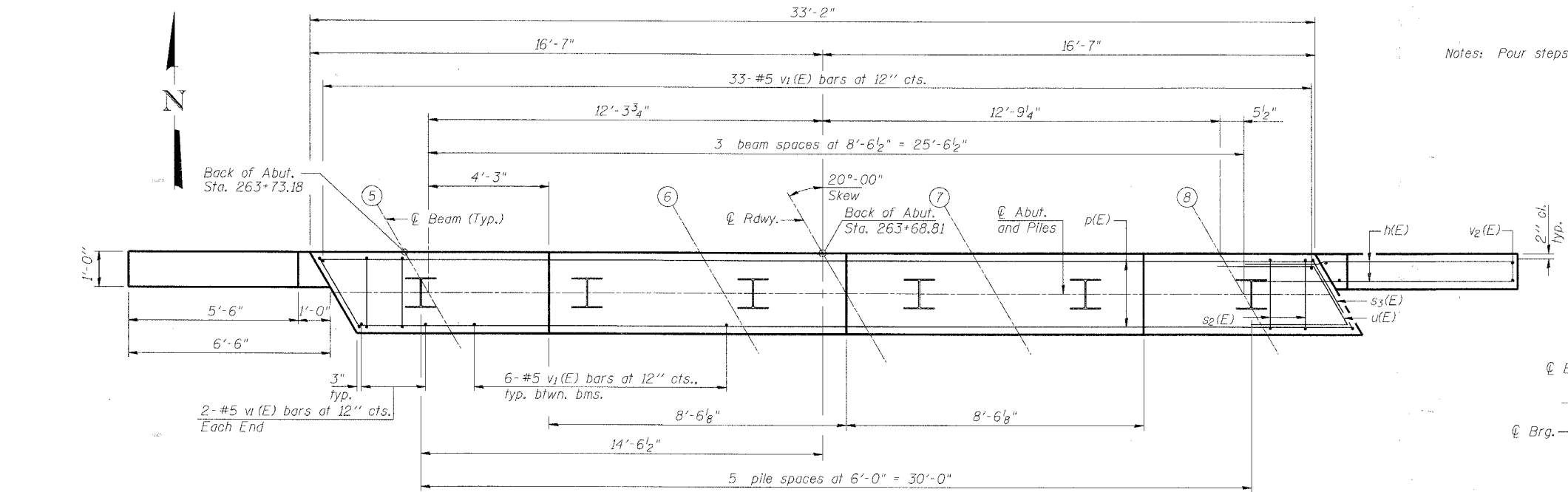


SEC. THRU ABUT.  
(Looking East)

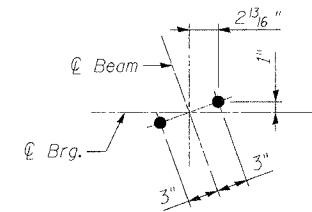
Notes: Pour steps monolithically with cap.

MIN. BAR LAP

- #5 - 2'-2"
- #6 - 2'-7"



PLAN

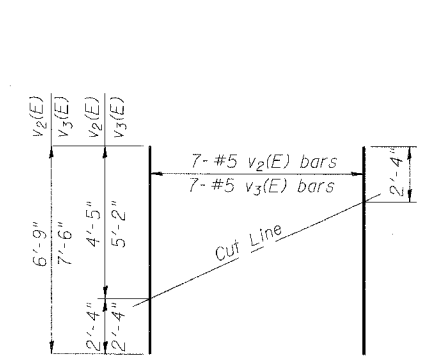


ANCHOR BOLT LAYOUT

PILE DATA

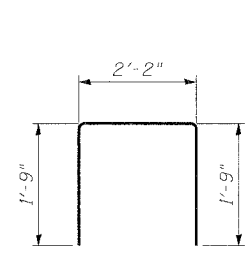
Type: Steel HP12x53 with Pile Shoes  
Nominal Required Bearing: 300 kips  
Allowable Resistance Available: 100 kips  
Est. Length: 58'  
No. Production Piles: 5  
No. Test Piles: 1

DESIGNED	SF
CHECKED	BAK
DRAWN	MTR
CHECKED	SF

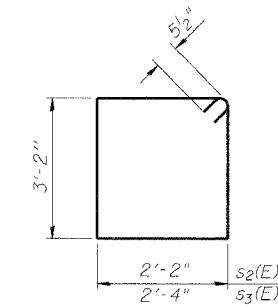


FIELD CUTTING DIAGRAM

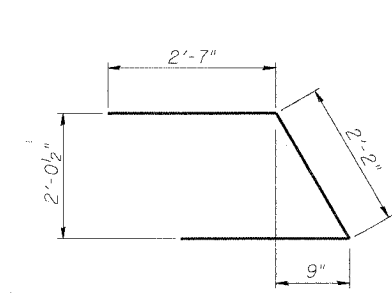
Order v2(E) & v3(E) Full length. Cut as shown and use remainder of bars in opposite face.



BAR u1(E)



BARS s2(E) & s3(E)



BAR u(E)

BILL OF MATERIAL

Bar	No.	Size	Length	Shape
h(E)	36	#5	8'-9"	—
h1(E)	3	#5	11'-0"	—
h2(E)	3	#5	7'-3"	—
p(E)	3	#6	32'-9"	—
s2(E)	34	#5	11'-7"	□
s3(E)	2	#5	11'-11"	□
u(E)	8	#6	7'-4"	U
u1(E)	16	#4	5'-8"	U
v1(E)	55	#5	4'-4"	—
v2(E)	7	#5	6'-9"	—
v3(E)	7	#5	7'-6"	—
Structure Excavation	Cu. Yd.	50		
Concrete Structures	Cu. Yd.	14.3		
Reinforcement Bars, Epoxy Coated	Pound	1,470		
Furnishing Steel Piles HP12x53	Foot	290		
Driving Piles	Foot	290		
Test Pile Steel HP12x53	Each	1		
Concrete Encasement	Cu. Yd.	2.1		
Pile Shoes	Each	6		

For details of piles and Concrete Encasement, see Sheet 19 of 31.

NORTH ABUTMENT - N.B.  
DUNHAM ROAD OVER  
THE CC&P RAILROAD  
SECTION 06-00214-07-BR  
KANE COUNTY  
STATION 262+90.93

STR. NO. 045-3169 (NB) / 045-3170 (SB)

BOWMAN, BARRETT & ASSOCIATES INC.  
CONSULTING ENGINEERS  
Chicago, Illinois  
312.228.0100  
www.bbainc.com  
Job No. 896

6/11/2007 6:51:57 PM

S:\896\CADD\5\Fruc7ur.dwg SHEETS\896SAB02.dwg