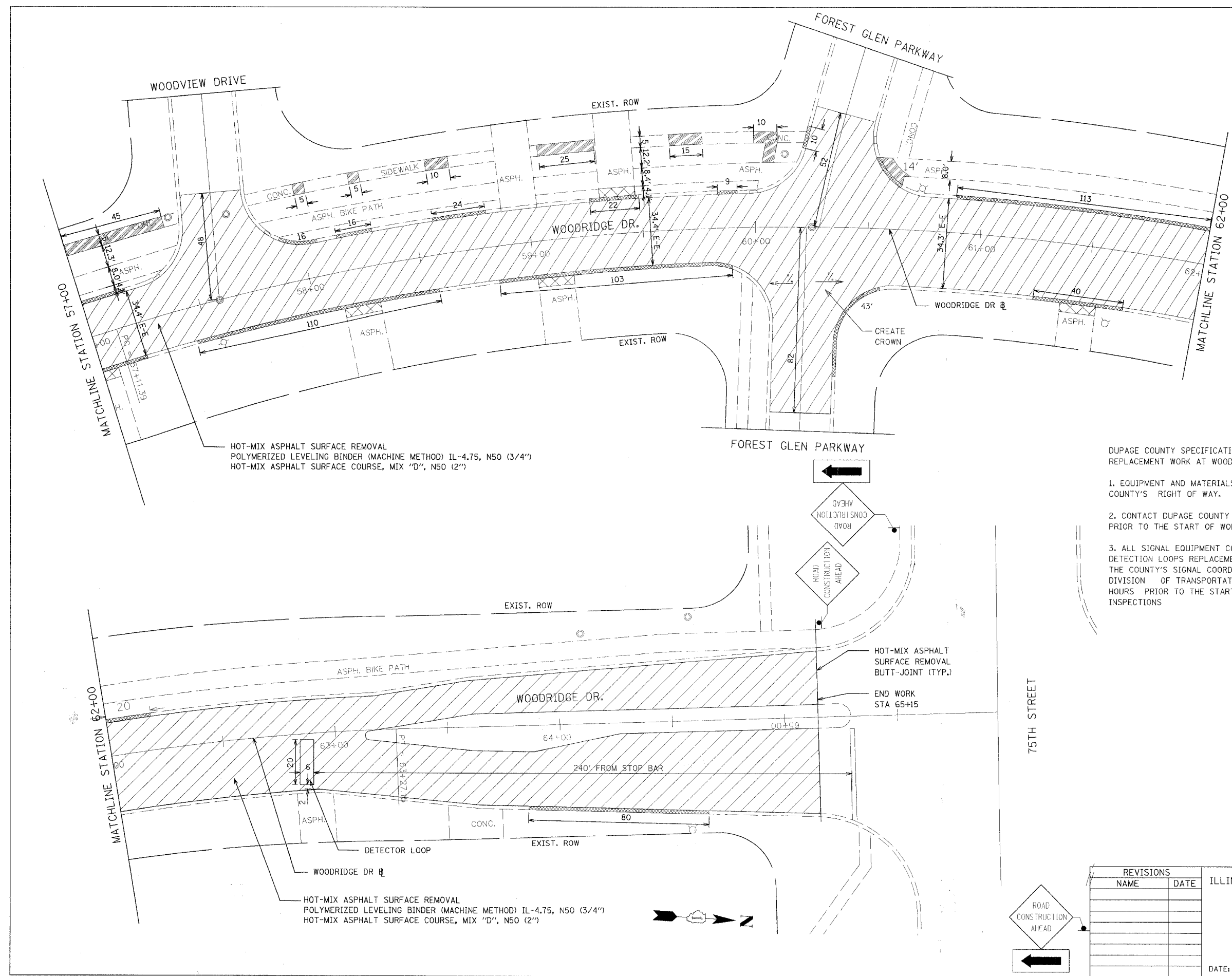


F.A.U. RTE.	SECTION	COUNTY	TOTAL SHEETS	SHEET NO.
3573	07-00058-00-RS	DUPAGE	21	9
STA. 57+00	TO STA. 64+50			
FED. ROAD DIST. NO.	ILLINOIS FED. AID PROJECT			

**CONTRACT NO. 83976**



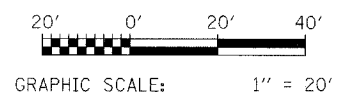
HOT-MIX ASPHALT SURFACE REMOVAL  
 POLYMERIZED LEVELING BINDER (MACHINE METHOD) IL-4.75, N50 (3/4")  
 HOT-MIX ASPHALT SURFACE COURSE, MIX "D", N50 (2")

HOT-MIX ASPHALT SURFACE REMOVAL  
 POLYMERIZED LEVELING BINDER (MACHINE METHOD) IL-4.75, N50 (3/4")  
 HOT-MIX ASPHALT SURFACE COURSE, MIX "D", N50 (2")

DUPAGE COUNTY SPECIFICATIONS/REQUIREMENTS FOR DETECTOR LOOP, REPLACEMENT WORK AT WOODRIDGE DR. AND 75TH STREET.

1. EQUIPMENT AND MATERIALS MAY NOT BE STORED WITHIN THE COUNTY'S RIGHT OF WAY.
2. CONTACT DUPAGE COUNTY (630-407-6700) A MINIMUM OF 48 HOURS PRIOR TO THE START OF WORK WITHIN THE COUNTY'S RIGHT OF WAY.
3. ALL SIGNAL EQUIPMENT CONSTRUCTION/RESTORATION (INCLUDING DETECTION LOOPS REPLACEMENT LAYOUT) SHALL BE COORDINATED WITH THE COUNTY'S SIGNAL COORDINATOR, MR. THOMAS HARDY, CONTACT THE DIVISION OF TRANSPORTATION AT 630-407-6900 A MINIMUM OF 48 HOURS PRIOR TO THE START OF CONSTRUCTION TO COORDINATE INSPECTIONS

- LEGEND**
- HOT-MIX ASPHALT SURFACE REMOVAL AND REPLACEMENT
  - SIDEWALK REMOVAL AND REPLACEMENT
  - DRIVEWAY REMOVAL 4' FROM BACK OF CURB (TYP.)
  - COMBINATION CONCRETE CURB AND GUTTER REMOVAL AND REPLACEMENT



REVISIONS	
NAME	DATE

ILLINOIS DEPARTMENT OF TRANSPORTATION  
**WOODRIDGE DRIVE**  
 RESURFACE PLAN  
 STA 57+00 - 64+50  
 DRAWN BY: LLM  
 DATE: OCTOBER 12, 2007  
 CHECKED BY: JRP

