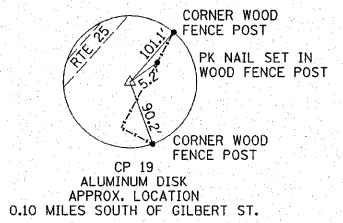
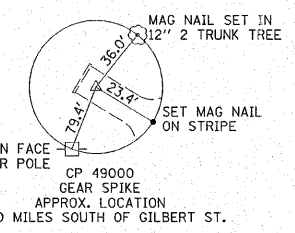
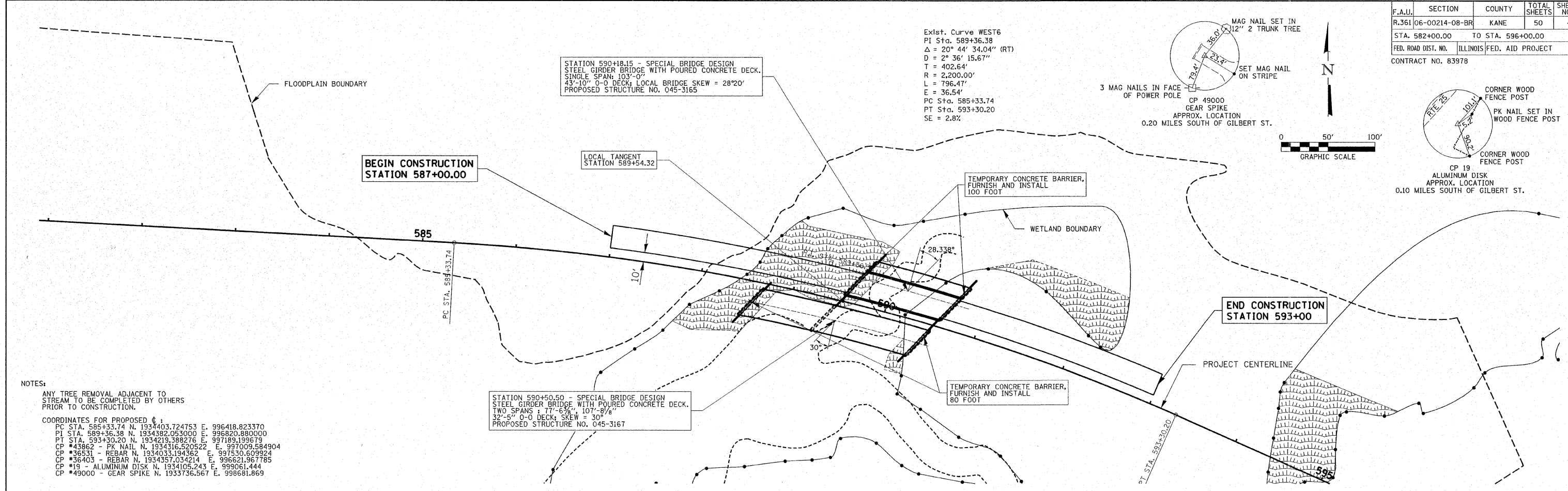


F.A.U.	SECTION	COUNTY	TOTAL SHEETS	SHEET NO.
R.361	06-00214-08-BR	KANE	50	4
STA. 582+00.00		TO STA. 596+00.00		
FED. ROAD DIST. NO.		ILLINOIS FED. AID PROJECT		
CONTRACT NO. 83978				

Exlst. Curve WEST6
 PI Sta. 589+36.38
 $\Delta = 20^\circ 44' 34.04''$ (RT)
 $D = 2^\circ 36' 15.67''$
 $T = 402.64'$
 $R = 2,200.00'$
 $L = 796.47'$
 $E = 36.54'$
 PC Sta. 585+33.74
 PT Sta. 593+30.20
 SE = 2.8%



PLAN	DATE
SUBMITTED	
PLOTTED	
REVISIONS	
NO. BY	
NO.	



NOTES:
 ANY TREE REMOVAL ADJACENT TO STREAM TO BE COMPLETED BY OTHERS PRIOR TO CONSTRUCTION.
 COORDINATES FOR PROPOSED ϕ :
 PC STA. 585+33.74 N. 1934403.724753 E. 996418.823370
 PI STA. 589+36.38 N. 1934382.053000 E. 996820.880000
 PT STA. 593+30.20 N. 1934219.388276 E. 997189.199679
 CP #43862 - PK NAIL N. 1934316.520522 E. 997009.584904
 CP #36531 - REBAR N. 1934033.194362 E. 997530.609924
 CP #36403 - REBAR N. 1934357.034214 E. 996621.967785
 CP #19 - ALUMINUM DISK N. 1934105.243 E. 999061.444
 CP #49000 - GEAR SPIKE N. 1933736.567 E. 998681.869

PROFILE	DATE
SUBMITTED	
PLOTTED	
REVISIONS	
NO. BY	
NO.	

