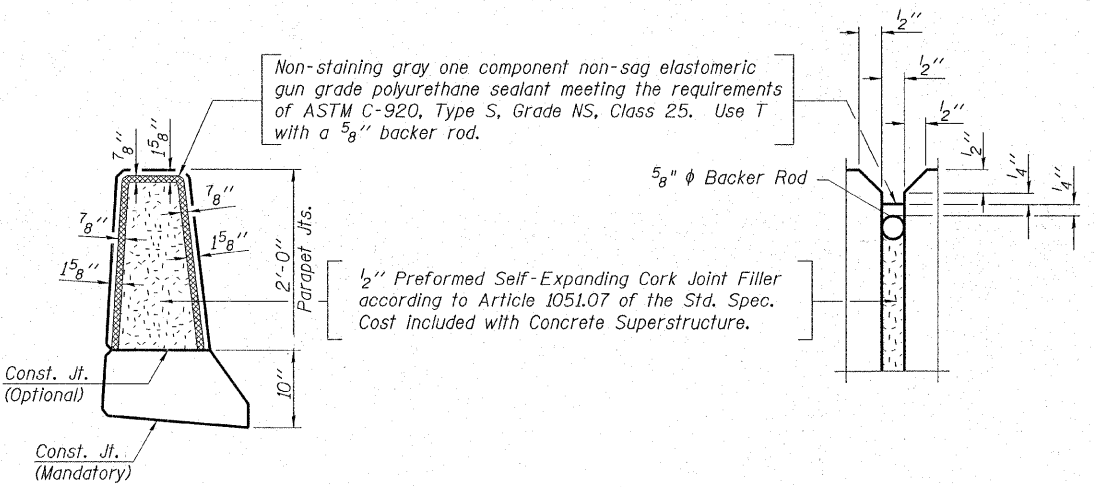


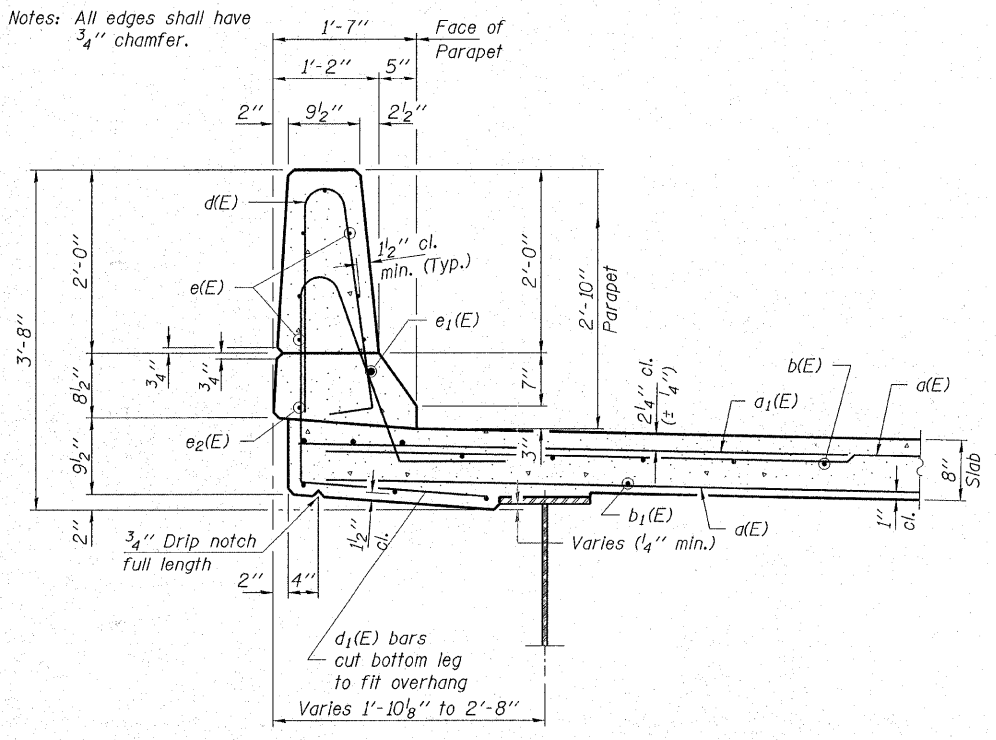
INSIDE ELEVATION OF PARAPET
(South Parapet of Westbound Structure)

MIN. BAR LAPS
#4 bars = 1'-8"
#8 bars = 4'-6"



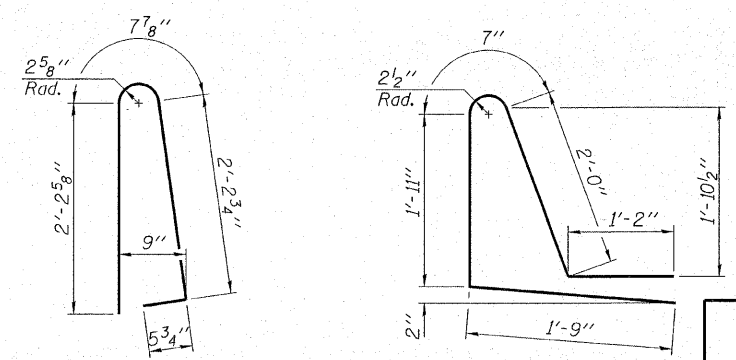
WESTBOUND SUPERSTRUCTURE
BILL OF MATERIAL

| BAR | NO. | SIZE | LENGTH | SHAPE |
|----------------------------------|-----|------|---------|--------|
| d(E) | 322 | #5 | 43'-4" | — |
| a ₁ (E) | 182 | #6 | 6'-0" | — |
| a ₂ (E) | 8 | #5 | 25'-10" | — |
| b(E) | 184 | #5 | 28'-1" | — |
| b ₁ (E) | 205 | #5 | 22'-11" | — |
| c(E) | 181 | #5 | 4'-11" | — |
| d(E) | 120 | #5 | 5'-7" | ⏏ |
| d ₁ (E) | 120 | #5 | 7'-5" | ⏏ |
| d ₂ (E) | 120 | #5 | 5'-10" | ⏏ |
| d ₃ (E) | 120 | #5 | 7'-8" | ⏏ |
| e(E) | 84 | #4 | 17'-4" | — |
| e ₁ (E) | 6 | #8 | 38'-4" | — |
| e ₂ (E) | 8 | #4 | 27'-9" | — |
| m(E) | 8 | #6 | 25'-10" | — |
| m ₁ (E) | 20 | #6 | 26'-4" | — |
| m ₂ (E) | 24 | #6 | 18'-7" | — |
| m ₃ (E) | 10 | #6 | 8'-6" | — |
| m ₄ (E) | 4 | #6 | 2'-10" | — |
| s(E) | 92 | #5 | 6'-7" | ⏏ |
| s ₁ (E) | 82 | #4 | 13'-6" | ⏏ |
| Reinforcement Bars, Epoxy Coated | | | Pound | 35,960 |
| Concrete Superstructure | | | Cu. Yd. | 190.4 |
| Bar Splicers, Special | | | Each | 86 |
| Parapet Railing | | | Foot | 106 |
| Bicycle Railing | | | Foot | 106 |



SECTION THRU PARAPET

PARAPET JOINT DETAILS



BAR d(E)

BAR d₁(E)

HAMPTON, LENZINI & RENWICK, INC.
CIVIL & STRUCTURAL ENGINEERS
LAND SURVEYORS

3085 STEVENSON DRIVE, SUITE 201
SPRINGFIELD, ILLINOIS 62703
(217) 546-3400

ELGIN • SPRINGFIELD

PROJECT NUMBER: 12-05-0077-1 DATE: 09/20/07
DESIGNED: T.P.L. CHECKED: J.L.B. DRAWN: P.J.L.

SUPERSTRUCTURE DETAILS
SECTION 06-00214-08-BR
F.A.U. ROUTE 361 / NEW STEARNS ROAD
OVER THE NORTH ARM OF BREWSTER CREEK
KANE COUNTY

STRUCTURE NO. 045-3165 (W.B.) / STATION 590+18.15