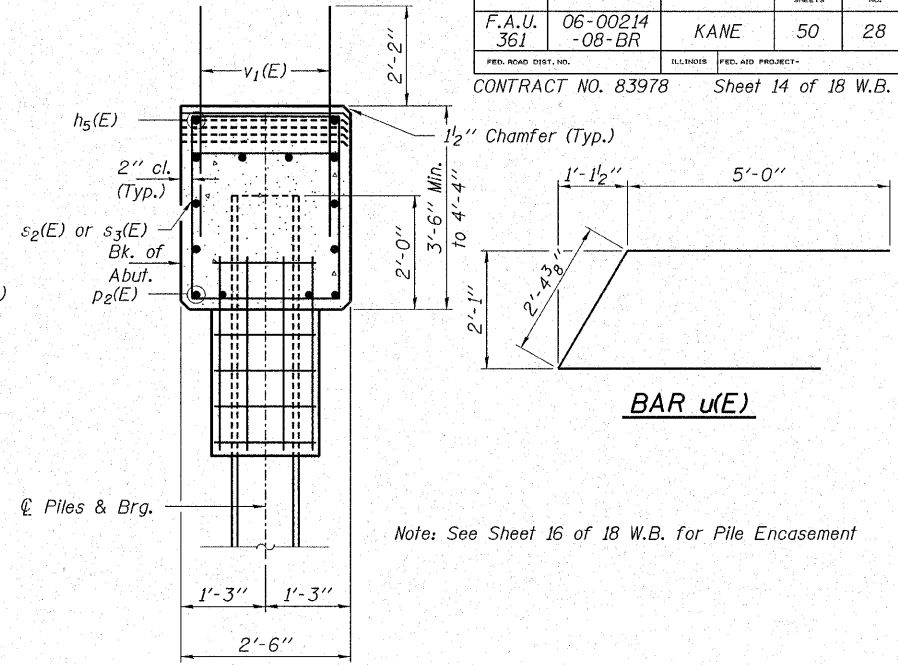


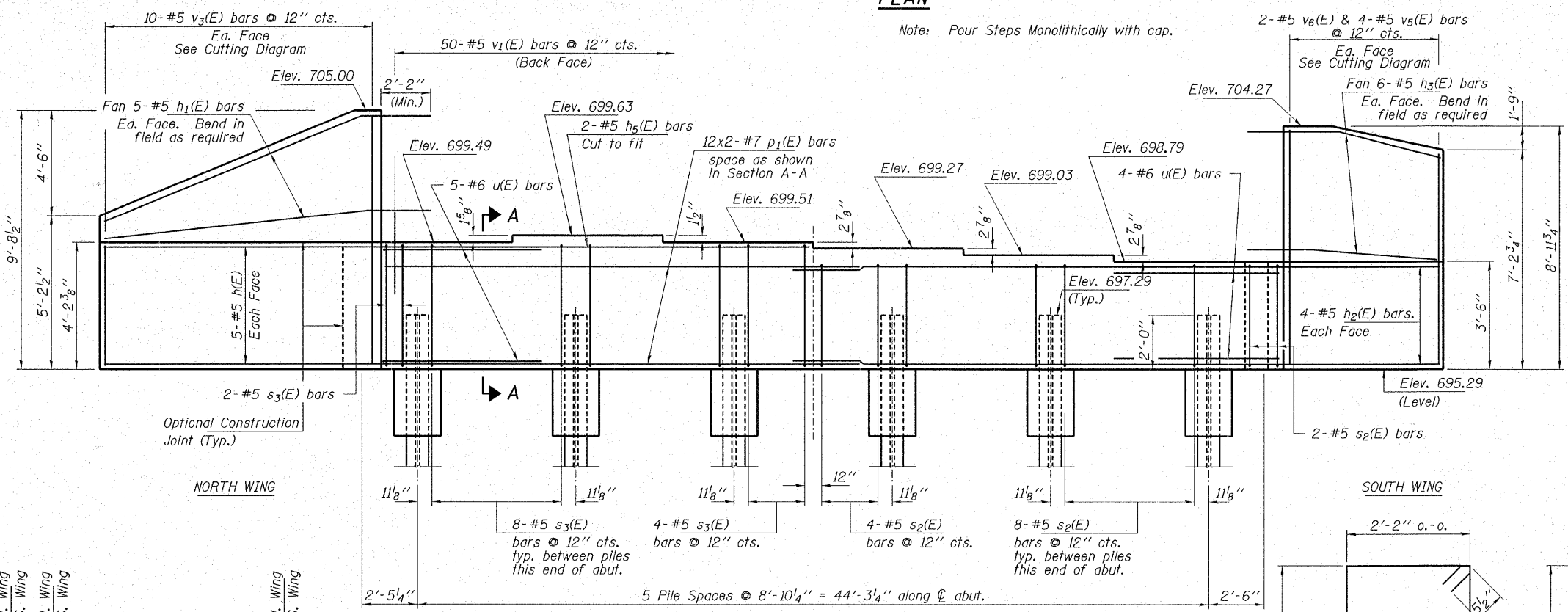
**PLAN**

Note: Four Steps Monolithically with cap.



**SECTION A-A**

Note: See Sheet 16 of 18 W.B. for Pile Encasement



**ELEVATION**

(East Abutment looking East)

**PILE DATA**

Type and Size \_\_\_\_\_ Steel HP12x74  
 Nominal Req'd Bearing \_\_\_\_\_ 589 Kips/Pile  
 Allowable Resistance Available \_\_\_\_\_ 196 Kips/Pile  
 Est. Length \_\_\_\_\_ 32 Ft/Pile  
 No. of Production Piles \_\_\_\_\_ 5  
 No. of Test Piles \_\_\_\_\_ 1

Notes: The Steel H-Piles shall be according to AASHTO M270 Grade 50.

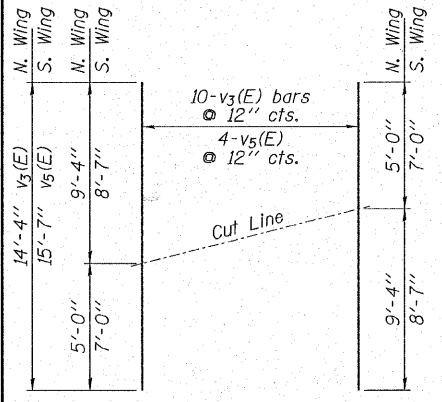
The test pile shall be driven to 110 percent of the Nominal Required Bearing indicated in the pile data information.

See Sheet 16 of 18 W.B. for Pile Details.

**BILL OF MATERIAL EAST ABUT.**

BAR	NO.	SIZE	LENGTH	SHAPE
h(E)	10	#5	12'-0"	—
h1(E)	10	#5	13'-1"	—
h2(E)	8	#5	8'-7"	—
h3(E)	12	#5	9'-1"	—
h5(E)	2	#5	24'-11"	—
p1(E)	24	#7	26'-10"	—
s2(E)	22	#5	11'-7"	□
s3(E)	22	#5	12'-11"	□
s4(E)	1	#5	12'-2"	□
s5(E)	1	#5	13'-6"	□
u(E)	9	#6	12'-5"	—
v1(E)	96	#5	4'-4"	—
v3(E)	10	#5	14'-4"	—
v5(E)	4	#5	15'-7"	—
v6(E)	4	#5	8'-7"	—
Concrete Structures			Cu. Yd.	23.1
Reinforcement Bars, Epoxy Coated			Pound	3,260
Furnishing Steel Piles HP 12x74			Foot	160
Driving Piles			Foot	160
Test Pile Steel HP 12x74			Each	1
Concrete Encasement			Cu. Yd.	2.1

Bars indicated thus 12x2-#7 etc. indicates 12 lines of bars with 2 lengths per line.



**FIELD CUTTING DIAGRAM**

Order v3(E) & v5(E) full length. Cut as shown and use remainder of bars in opposite face.

**MIN. BAR LAPS**

#5 = 2'-2"  
 #7 = 4'-10"

**TYP. ANCHOR BOLT LOCATIONS**

Note: Space reinforcement in the cap to miss anchor bolts.

**HAMPTON, LENZINI & RENWICK, INC.**  
 CIVIL & STRUCTURAL ENGINEERS  
 LAND SURVEYORS

**HLR**

3085 STEVENSON DRIVE, SUITE 201  
 SPRINGFIELD, ILLINOIS 62703  
 (217) 546-3400

ELGIN • SPRINGFIELD

PROJECT NUMBER: 12-05-0077-1 DATE: 09/20/07  
 DESIGNED: T.P.L. CHECKED: J.L.B. DRAWN: P.J.L.

**EAST ABUTMENT**  
 SECTION 06-00214-08-BR  
 F.A.U. ROUTE 361 / NEW STEARNS ROAD  
 OVER THE NORTH ARM OF BREWSTER CREEK  
 KANE COUNTY

**STRUCTURE NO. 045-3165 (W.B.) / STATION 590+18.15**