

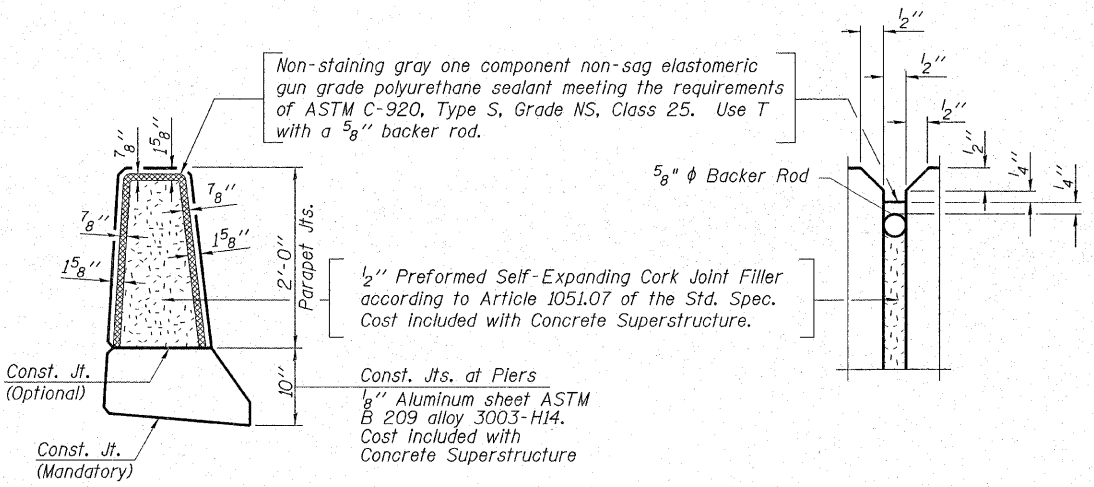
**EASTBOUND SUPERSTRUCTURE  
BILL OF MATERIAL**

BAR	NO.	SIZE	LENGTH	SHAPE
a <sub>20</sub> (E)	499	#5	31'-11"	—
a <sub>21</sub> (E)	280	#6	6'-0"	—
a <sub>22</sub> (E)	8	#5	20'-4"	—
b <sub>20</sub> (E)	216	#5	32'-9"	—
b <sub>21</sub> (E)	238	#5	28'-4"	—
b <sub>22</sub> (E)	99	#6	21'-4"	—
d <sub>20</sub> (E)	405	#5	5'-7"	⌋
d <sub>21</sub> (E)	202	#5	8'-2"	⌋
d <sub>22</sub> (E)	203	#5	8'-4"	⌋
e <sub>20</sub> (E)	28	#4	16'-2"	—
e <sub>21</sub> (E)	32	#4	13'-9"	—
e <sub>22</sub> (E)	35	#4	17'-11"	—
e <sub>23</sub> (E)	2	#8	35'-0"	—
e <sub>24</sub> (E)	4	#8	13'-9"	—
e <sub>25</sub> (E)	3	#8	33'-3"	—
e <sub>26</sub> (E)	3	#4	23'-0"	—
e <sub>27</sub> (E)	4	#4	23'-11"	—
e <sub>28</sub> (E)	35	#4	18'-0"	—
e <sub>29</sub> (E)	28	#4	16'-4"	—
e <sub>30</sub> (E)	3	#8	33'-4"	—
e <sub>31</sub> (E)	2	#8	35'-3"	—
e <sub>32</sub> (E)	4	#4	24'-0"	—
e <sub>33</sub> (E)	3	#4	23'-3"	—
m <sub>20</sub> (E)	8	#6	19'-3"	—
m <sub>21</sub> (E)	20	#6	20'-4"	—
m <sub>22</sub> (E)	40	#6	9'-8"	—
m <sub>23</sub> (E)	8	#6	7'-8"	—
m <sub>24</sub> (E)	2	#6	3'-11"	—
m <sub>25</sub> (E)	2	#6	1'-10"	—
s <sub>20</sub> (E)	68	#5	6'-7"	⌋
s <sub>21</sub> (E)	68	#4	12'-8"	⌋
Concrete Superstructure			Cu. Yd.	228.0
Reinforcement Bars, Epoxy Coated			Pound	48,350
Bar Splicers, Special			Each	60

Bars indicated thus 1 x 3-#8 etc. indicates 1 line of bars with 3 lengths per line.

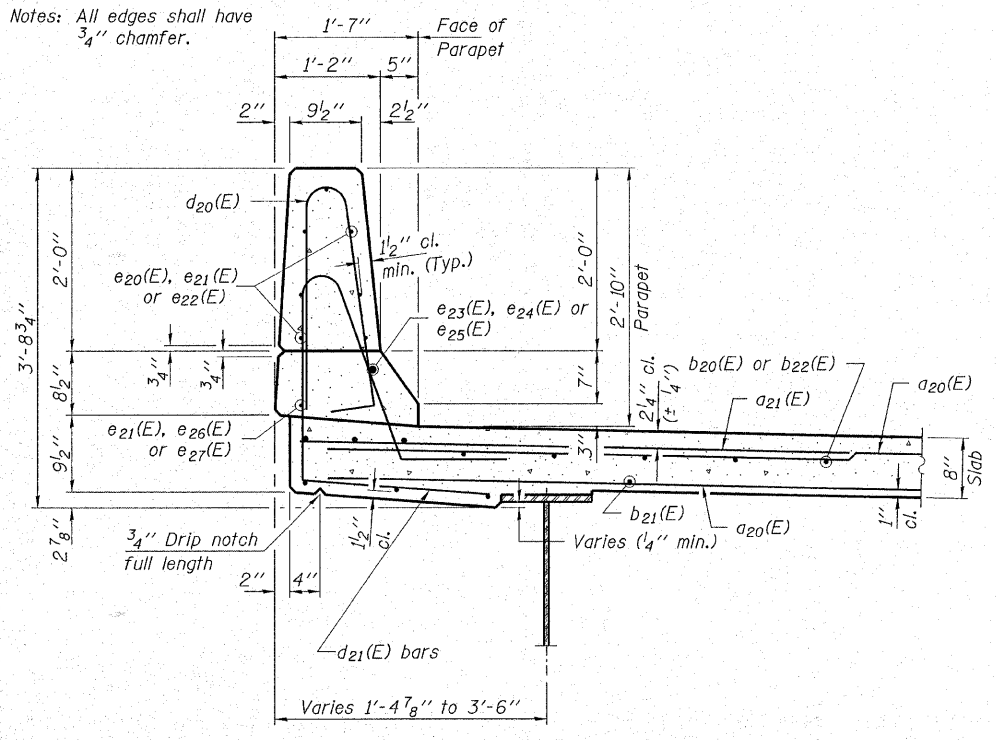
**INSIDE ELEVATION OF NORTH PARAPET**  
(Eastbound Structure)

**MIN. BAR LAPS**  
#4 bars = 1'-8"  
#5 bars = 2'-2"  
#8 bars = 4'-6"

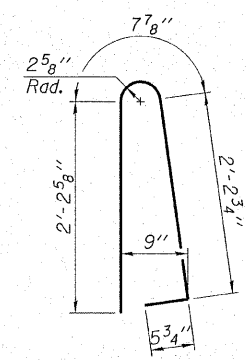


**PARAPET JOINT DETAILS**

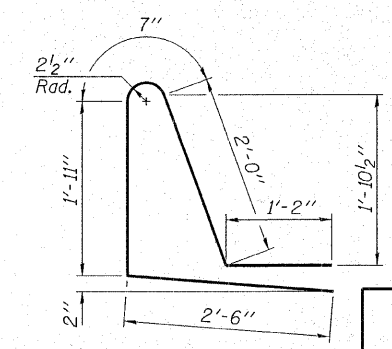
Notes: All edges shall have 3/4" chamfer.



**SECTION THRU PARAPET**



**BAR d<sub>20</sub>(E)**



**BAR d<sub>21</sub>(E)**

**HAMPTON, LENZINI & RENWICK, INC.**  
CIVIL & STRUCTURAL ENGINEERS  
LAND SURVEYORS  
3085 STEVENSON DRIVE, SUITE 201  
SPRINGFIELD, ILLINOIS 62703  
(217) 546-3400

**ELGIN • SPRINGFIELD**

PROJECT NUMBER: 12-05-0077-1 DATE: 09/20/07  
DESIGNED: T.P.L. CHECKED: J.L.B. DRAWN: P.J.L.

**SUPERSTRUCTURE DETAILS**  
SECTION 06-00214-08-BR  
F.A.U. ROUTE 361 / NEW STEARNS ROAD  
OVER THE NORTH ARM OF BREWSTER CREEK  
KANE COUNTY  
STRUCTURE NO. 045-3167 (E.B.) / STATION 590+50.50