

FOR INDEX OF SHEETS, SEE SHEET NO. 2

FOR INDEX OF HIGHWAY STANDARDS, SEE SHEET NO. 2

PROJECT
LOCATED IN THE
VILLAGE OF LAKEWOOD

PROJECT NUMBER: M-8003(840)
F.A.U. ROUTE 3869 HALIGUS ROAD
END RESURFACING
STA. 92 + 37

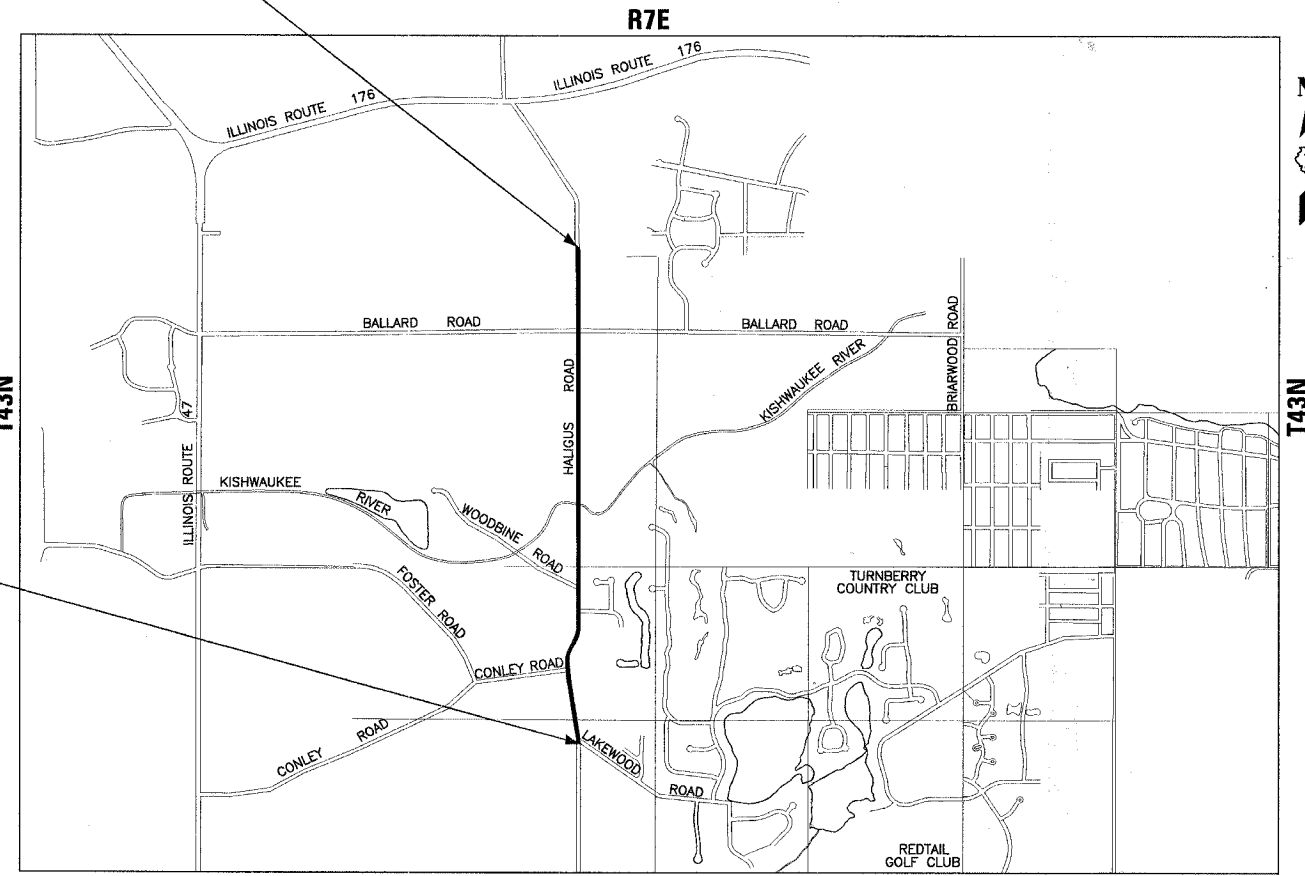
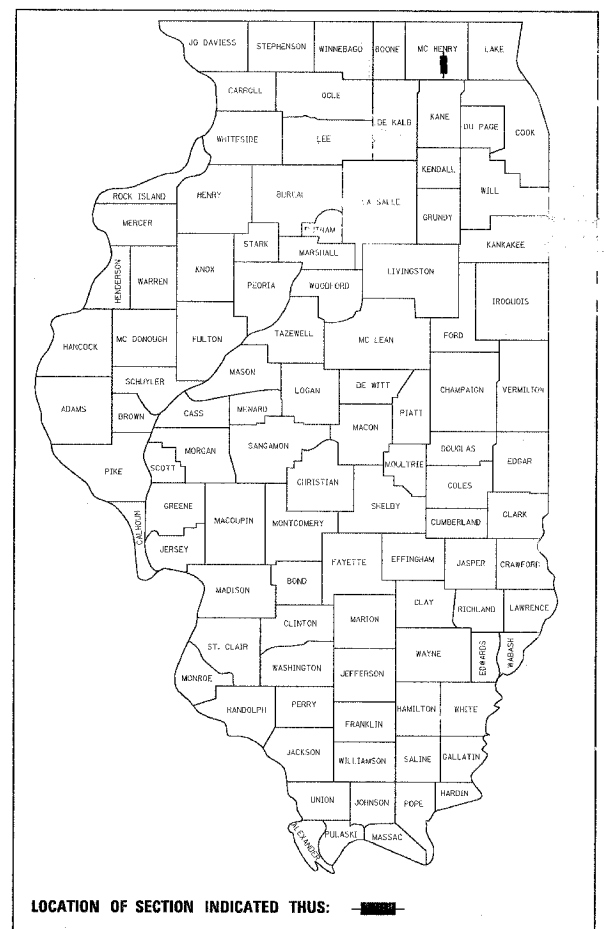
PROJECT NUMBER: M-8003(840)
F.A.U. ROUTE 3869 HALIGUS ROAD
BEGIN RESURFACING
STA. 9 + 20

STATE OF ILLINOIS
DEPARTMENT OF TRANSPORTATION
DIVISION OF HIGHWAYS

**PLANS FOR PROPOSED
FEDERAL AID PROJECT**
F.A.U. ROUTE 3869 HALIGUS ROAD
FROM LAKEWOOD ROAD TO NORTH VILLAGE LIMITS
RESURFACING

PROJECT NO.: M-8003 (840)
SECTION 07-00009-00-RS
JOB NO: C-91-340-07
VILLAGE OF LAKEWOOD
MCHENRY COUNTY

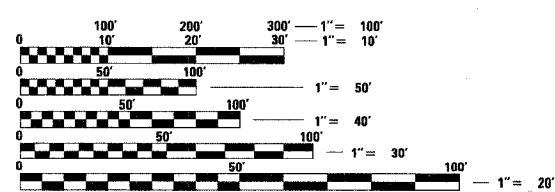
LOCATION MAP



R7E
GRAFTON TOWNSHIP
SCALE 1" = 1500'
GROSS LENGTH OF IMPROVEMENT = 8,317 LF OR 1.575 MILES
NET LENGTH OF IMPROVEMENT = 8,317 LF OR 1.575 MILES



TRAFFIC DATA
POSTED & DESIGN SPEED LIMIT = 45 MPH
2007 ADT = 5,000
DESIGN DESIGNATION - 5,000(07) COLLECTOR 0.31 (B-10)



FULL SIZE PLANS HAVE BEEN PREPARED USING STANDARD ENGINEERING SCALES. REDUCED SIZED PLANS WILL NOT CONFORM TO STANDARD SCALES. IN MAKING MEASUREMENTS ON REDUCED PLANS, THE ABOVE SCALES MAY BE USED.

J.U.L.I.E.
JOINT UTILITY LOCATION INFORMATION FOR EXCAVATION
1-800-892-0123

MICHAEL W. PLANT
62-056311
REGISTERED
PROFESSIONAL
ENGINEER
OF
STATE OF ILLINOIS
PROJECT MANAGER
"LICENSE EXPIRES 11-30-07"

PROJECT ENGINEER

STATE OF ILLINOIS
DEPARTMENT OF TRANSPORTATION
DIVISION OF HIGHWAYS

APPROVED October 25, 2007
Catherine Peterson
VILLAGE OF LAKEWOOD VILLAGE ADMINISTRATOR

PASSED NOVEMBER 5,
C. H. C. HERSHBERGER
REGION ONE ENGINEER OF LOCAL ROADS & STREETS

RELEASING FOR BID
BASED ON LIMITED
REVIEW Nov. 6, 2007
Diane O'Keefe
DEPUTY DIRECTOR OF
HIGHWAYS, REGION 1 ENGINEER

PRINTED BY THE AUTHORITY
OF THE STATE OF ILLINOIS

847-705-4169 SCHAUMBURG, IL
 847-705-4169 SCHAUMBURG, IL
 BUREAU OF LOCAL ROADS AND STREETS: ALEX HOUSER, P.E./KEVIN STALLWORTH

CONTRACT NO: 83979
COUNTY: MCHENRY SECTION NUMBER: 07-00009-00-RS

Burlington, Wisconsin (Crystal Lake, Illinois) DeKalb, Illinois Itasca, Illinois Mokena, Illinois Grayslake, Illinois Plainfield, Illinois Rockford, Illinois Madison, Wisconsin
262.763.7834 815.459.1260 815.787.3111 630.773.1870 708.560.7070 847.223.5088 815.609.7425 815.489.1551 608.347.1542
(OFFICE WHICH PREPARED PLANS)

NOT FOR BIDDING
B&W PROJECT NO.: 070489 DATE: 08-07-2007