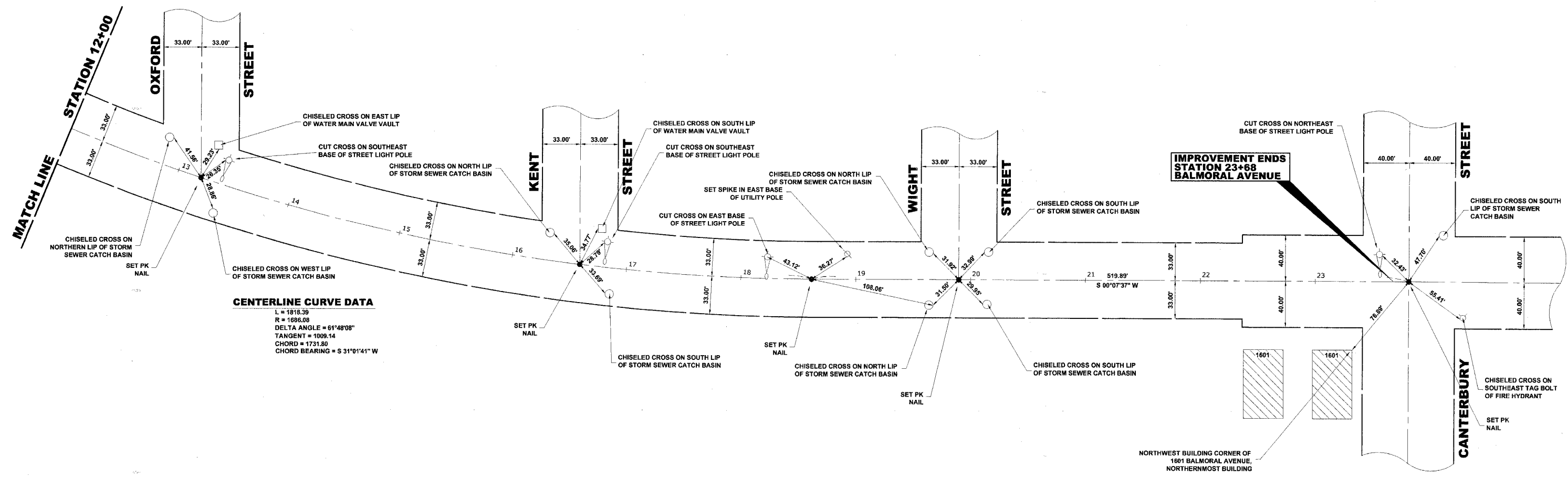


ROUTE NO.	SECTION	COUNTY	TOTAL SHEETS	SHEET NO.
FAU 2712	**	COOK	36	7
ILLINOIS PROJECT M-8003(655)				
VILLAGE SECTION 05-00069-00-FP				
CONTRACT NO. 83982				



CENTERLINE CURVE DATA
 L = 1818.39
 R = 1696.08
 DELTA ANGLE = 61°48'08"
 TANGENT = 1009.14
 CHORD = 1731.80
 CHORD BEARING = S 31°01'41" W

Drawing file: W:\Projects\2806156 - Balmoral Avenue Phase II\Alignment and Ties.dwg Oct 03, 2007 - 4:35pm


HANCOCK ENGINEERING
 ♦ Civil Engineers
 ♦ Municipal Consultants
 ♦ Established 1911

9933 Roosevelt Road
 Westchester, Illinois 60154-2780
 Phone: 708/865-0300
 Fax: 708/865-1212

BALMORAL AVENUE IMPROVEMENTS
VILLAGE OF WESTCHESTER, ILLINOIS

ALIGNMENT AND TIES

SCALE:	1"=40'	SHEET	7
DRAWN BY:	NAW/LEV/MK	OF	36
BOOK NO.:	1394/1427/LS		
DATE:	10-3-07		
REVISION:			
E.H.E. NO.:	838-06-16601		