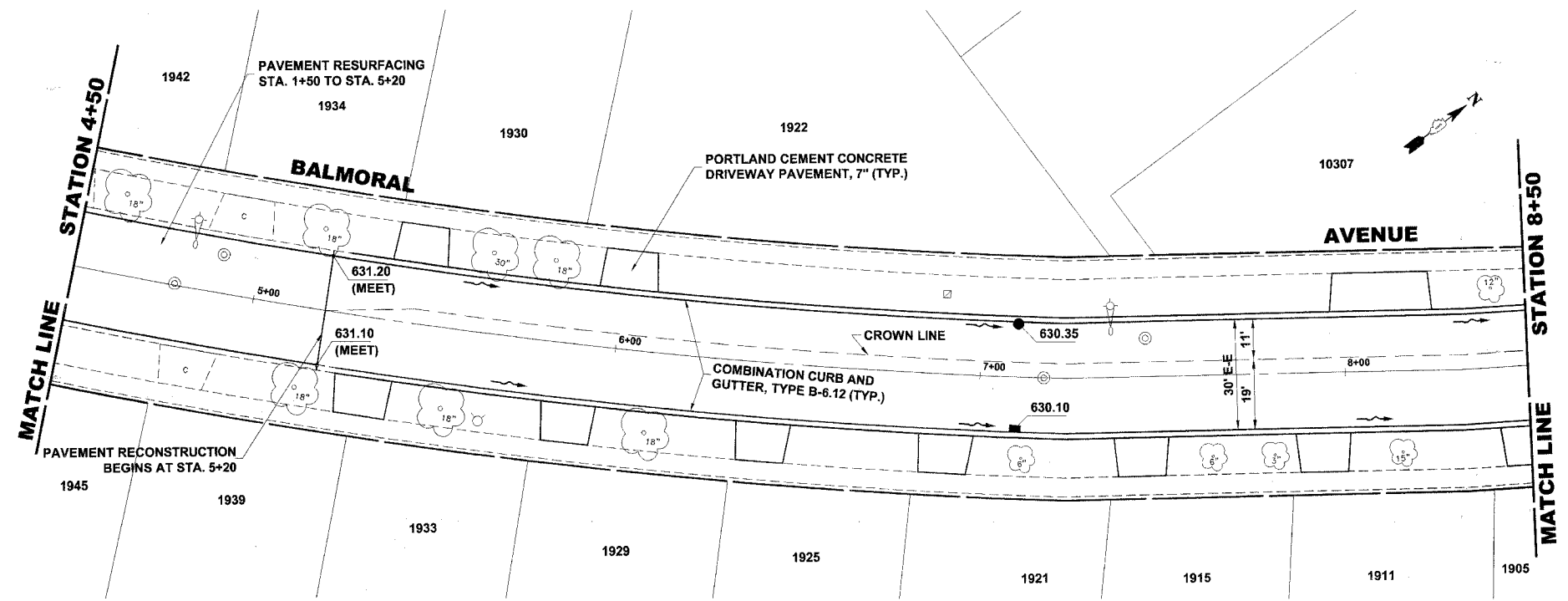
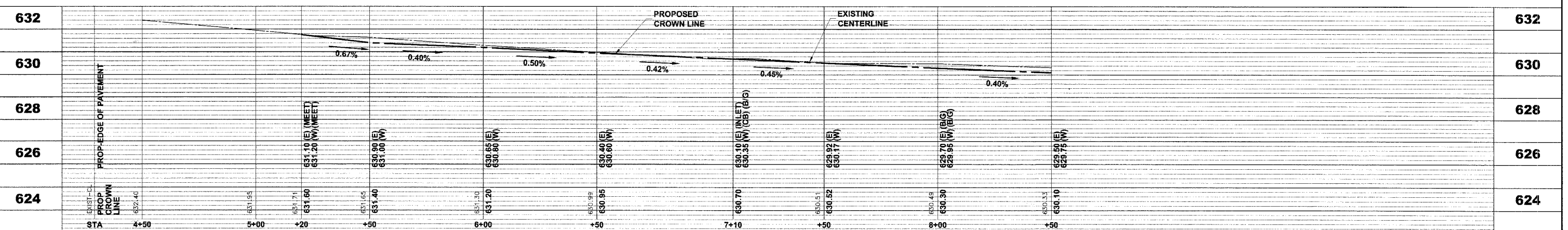


EXISTING TOPOGRAPHY

NOTE:
 ONLY CERTAIN DETERIORATED SECTIONS OF COMBINATION CURB AND GUTTER WILL BE REPLACED FROM STATION 1+50 TO STA. 5+20. LOCATIONS TO BE DETERMINED IN THE FIELD BY THE ENGINEER.



PROPOSED IMPROVEMENTS



Drawing File: W:\Projects\83982\106 - Balmoral Avenue Phase A\B11M\654_Balmoral.dwg Oct 04, 2007 - 9:54am



♦ Civil Engineers
 ♦ Municipal Consultants
 ♦ Established 1911
 9933 Roosevelt Road
 Westchester, Illinois 60154-2780
 Phone: 708/865-0300
 Fax: 708/865-1212

**BALMORAL AVENUE IMPROVEMENTS
 VILLAGE OF WESTCHESTER, ILLINOIS**

**EXISTING AND PROPOSED
 PAVING PLAN AND PROFILE**