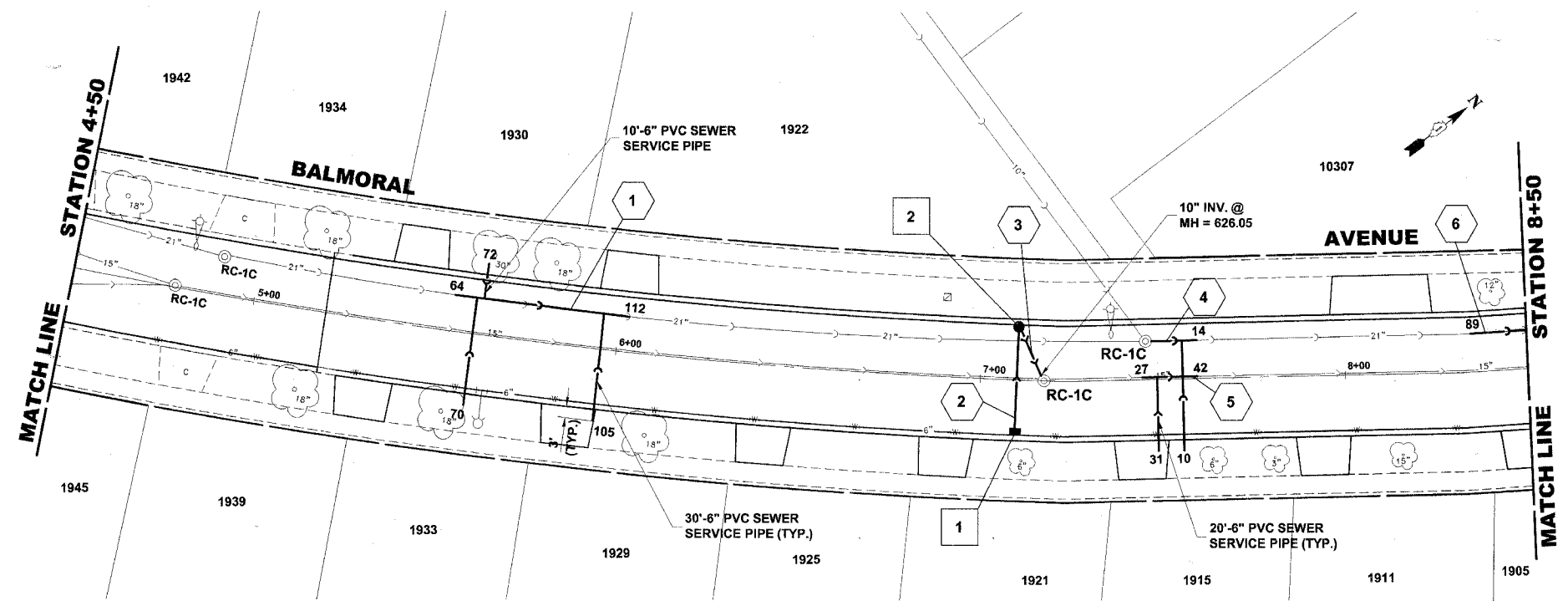


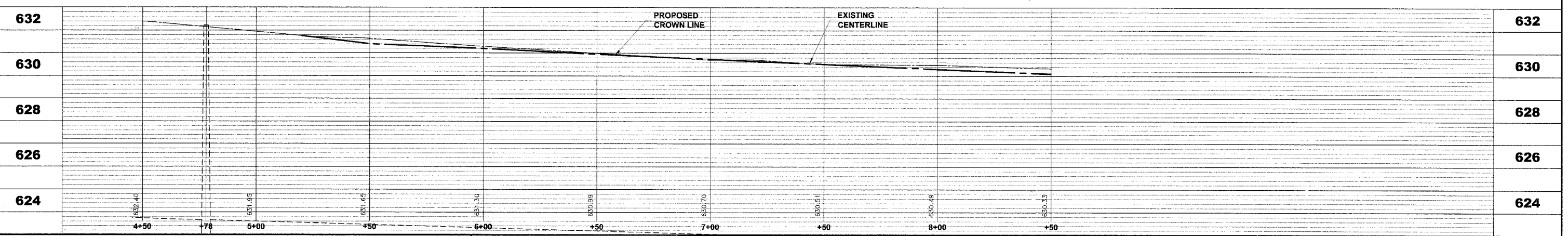
STRUC. NO.	STA.	OFFSET	TYPE	RIM ELEV.	INV. ELEV.
1	7+10	15' RT.	INLET, TYPE A, TYPE 1 FRAME, OPEN LID	630.10	626.60 NW
2	7+10	15' LT.	R.D. CATCH BASIN, 4' DIA. TYPE 1 FRAME, OPEN LID	630.35	626.20 E

**EXISTING TOPOGRAPHY**



PIPE NO.	LENGTH	DIA.	TYPE	SLOPE	C.Y.T.B.
1	48'	21"	SAN. SEWER, PVC	0.15%	67.0
2	30'	10"	SS, PVC, SDR 26	1.00%	1.0
3	15'	10"	SS, PVC, SDR 26	1.00%	1.30
4	14'	21"	SAN. SEWER, PVC	0.26%	17.1
5	15'	15"	SS, PVC, SDR 26	0.21%	12.6
6	20'	21"	SAN. SEWER, PVC	0.26%	24.7

**PROPOSED IMPROVEMENTS**



Drawing File: W:\Projects\6300166 - Balmoral Avenue Phase II\BALMORAL\Balmoral.dwg Oct. 04, 2007 - 8:57am

**HANCOCK ENGINEERING**  
 Civil Engineers  
 Municipal Consultants  
 Established 1911

9933 Roosevelt Road  
 Westchester, Illinois 60154-2780  
 Phone: 708/865-0300  
 Fax: 708/865-1212

**BALMORAL AVENUE IMPROVEMENTS  
 VILLAGE OF WESTCHESTER, ILLINOIS**

**EXISTING AND PROPOSED  
 DRAINAGE AND UTILITIES  
 PLAN AND PROFILE**

SCALE: 1"=20'H; 1"=2'V  
 DRAWN BY: NAW/LEV/MK  
 BOOK NO.: 1394/1427/LS  
 DATE: 10-3-07  
 E.H.E. NO.: 838-06-16601

REVISION:

SHEET **18** / 36