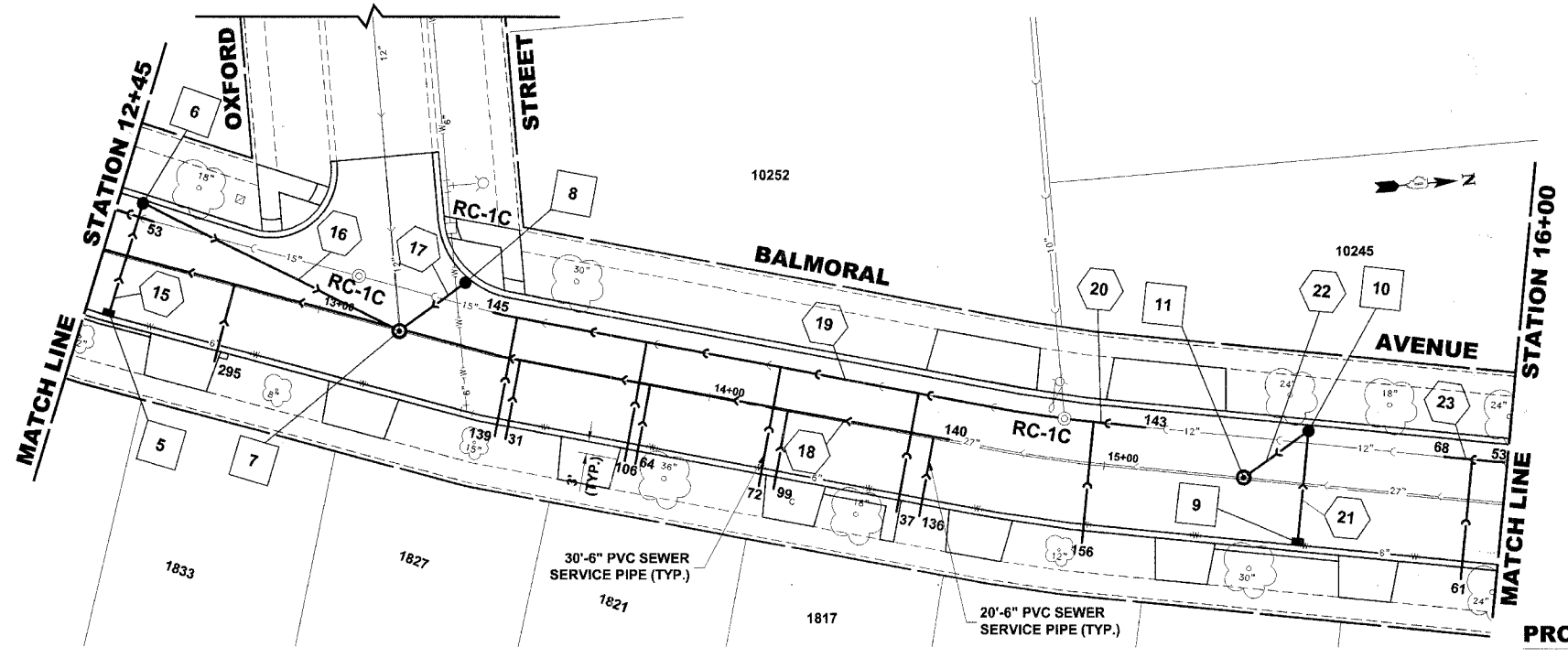


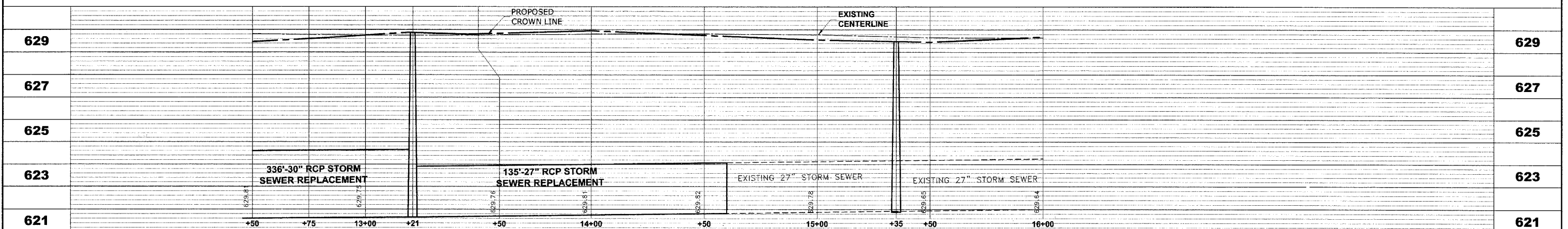
**EXISTING TOPOGRAPHY**

STRUC. NO.	STA.	OFFSET	TYPE	RIM ELEV.	INV. ELEV.
5	12+50	15' RT	INLET, TYPE A TYPE 1 FRAME, OPEN LID	628.80	625.30 W
6	12+50	15' LT	R.D. CATCH BASIN, 4' DIA. TYPE 1 FRAME, OPEN LID	629.00	625.00 E 624.90 NE
7	13+21	0'	R.D. STORM SEWER MANHOLE, 5' DIA., TYPE 1 FRAME, CLOSED LID	629.85	625.60 NW 624.20 SW 623.95 W 621.65 N-S
8	13+33	17' LT	R.D. CATCH BASIN, 4' DIA. TYPE 1 FRAME, OPEN LID	629.30	625.80 SE
9	15+50	15' RT	INLET, TYPE A TYPE 1 FRAME, OPEN LID	628.80	625.30 W
10	15+50	15' LT	R.D. CATCH BASIN, 4' DIA. TYPE 1 FRAME, OPEN LID	629.00	625.00 E 624.90 SE
11	15+35	0'	R.D. STORM SEWER MANHOLE, 5' DIA., TYPE 1 FRAME, CLOSED LID	629.30	624.70 NW 621.92 N-S



**PROPOSED IMPROVEMENTS**

PIPE NO.	LENGTH	DIA.	TYPE	SLOPE	C.Y.T.B.
15	30'	10"	SS, PVC, SDR 26	1.00%	0.9
16	70'	10"	SS, PVC, SDR 26	1.00%	8.6
17	20'	10"	SS, PVC, SDR 26	1.00%	0.8
18	135'	27"	SS, TY-2, RCP, CL-III	0.13%	137.0
19	145'	15"	SAN. SEWER, PVC	0.19%	160.8
20	20'	12"	SAN. SEWER, PVC	0.33%	20.4
21	30'	10"	SS, PVC, SDR 26	1.00%	0.9
22	20'	10"	SS, PVC, SDR 26	1.00%	2.0
23	15'	12"	SAN. SEWER, PVC	0.33%	15.0



<p><b>HANCOCK ENGINEERING</b> Civil Engineers Municipal Consultants Established 1911</p>	<p>9933 Roosevelt Road Westchester, Illinois 60154-2780 Phone: 708/865-0300 Fax: 708/865-1212</p>	<p><b>BALMORAL AVENUE IMPROVEMENTS</b> VILLAGE OF WESTCHESTER, ILLINOIS</p>	<p><b>EXISTING AND PROPOSED</b> DRAINAGE AND UTILITIES PLAN AND PROFILE</p>	<p>SCALE: 1"=20'H; 1"=2'V</p>	<p>SHEET <b>20</b> OF <b>36</b></p>
				<p>DRAWN BY: NAW/LEV/MK</p> <p>BOOK NO.: 1394/1427/LS</p> <p>DATE: 10-3-07</p> <p>E.H.E. NO.: 838-06-16601</p>	

Drawing File: W:\Projects\83806168 - Balmoral Avenue Improvements\Balmoral.dwg Oct 04, 2007 - 8:57am