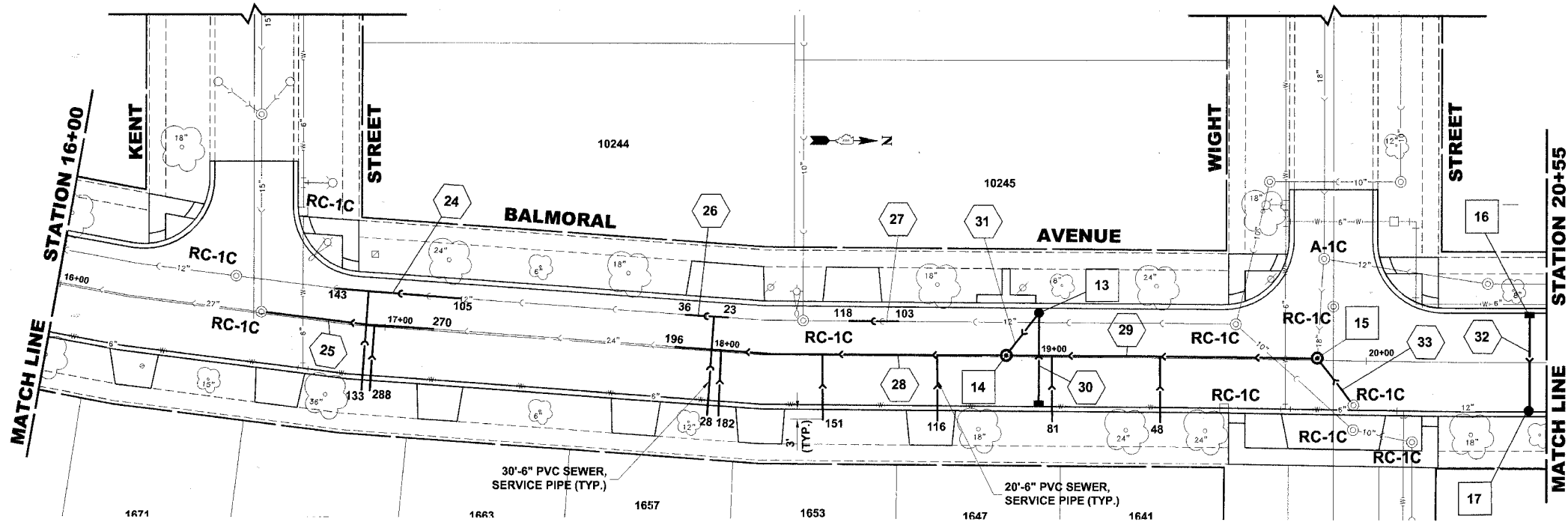


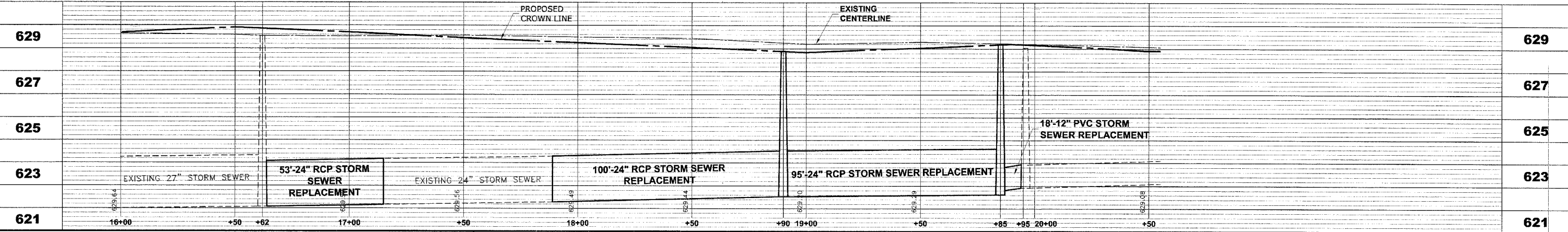
STRUC. NO.	STA.	OFFSET	TYPE	RIM ELEV.	INV. ELEV.
12	19+00	15' RT	INLET, TYPE A TYPE 1 FRAME, OPEN LID	628.20	624.90 W
13	19+00	15' LT	R.D. CATCH BASIN, 4' DIA. TYPE 1 FRAME, OPEN LID	628.40	624.65 E 624.75 SE
14	18+90	0'	R.D. STORM SEWER MANHOLE, 5' DIA., TYPE 1 FRAME, CLOSED LID	628.70	624.60 NW 622.45 N-S
15	19+85	0'	R.D. STORM SEWER MANHOLE, 5' DIA., TYPE 1 FRAME, CLOSED LID	629.25	622.63 NE 622.63 W 622.63 S 624.40 NW
16	20+50	15' LT	INLET, TYPE A TYPE 1 FRAME, OPEN LID	628.30	624.80 E
17	20+50	20' RT	R.D. CATCH BASIN, 4' DIA. TYPE 1 FRAME, OPEN LID	628.25	624.50 W 623.10 N-S

EXISTING TOPOGRAPHY



PIPE NO.	LENGTH	DIA.	TYPE	SLOPE	C.Y.T.B.
24	38'	12"	SAN. SEWER, PVC	0.25%	37.1
25	53'	24"	SS, TY-2, RCP, CL-III	0.17%	47.8
26	13'	12"	SAN. SEWER, PVC	0.25%	12.7
27	15'	12"	SAN. SEWER, PVC	0.22%	13.5
28	100'	24"	SS, TY-2, RCP, CL-III	0.17%	82.3
29	95'	24"	SS, TY-2, RCP, CL-III	0.17%	70.7
30	30'	10"	SS, PVC, SDR 26	1.00%	0.9
31	15'	10"	SS, PVC, SDR 26	1.00%	1.6
32	30'	10"	SS, PVC, SDR 26	1.00%	0.6
33	18'	12"	SS, PVC, SDR 26	1.67%	7.4

PROPOSED IMPROVEMENTS



Drawing file: W:\Projects\83982\Fig - Balmoral Avenue Phase II\Balmoral\Balmoral.dwg Oct. 04, 2007 - 8:57am

**HANCOCK ENGINEERING**  
 Civil Engineers  
 Municipal Consultants  
 Established 1911

9933 Roosevelt Road  
 Westchester, Illinois 60154-2780  
 Phone: 708/865-0300  
 Fax: 708/865-1212

**BALMORAL AVENUE IMPROVEMENTS  
 VILLAGE OF WESTCHESTER, ILLINOIS**

**EXISTING AND PROPOSED  
 DRAINAGE AND UTILITIES  
 PLAN AND PROFILE**

SCALE: 1"=20'H; 1"=2'V  
 DRAWN BY: NAW/LEV/MK  
 BOOK NO.: 1394/1427/LS  
 DATE: 10-3-07  
 E.H.E. NO.: 838-06-16601

REVISION:

SHEET **21** OF **36**