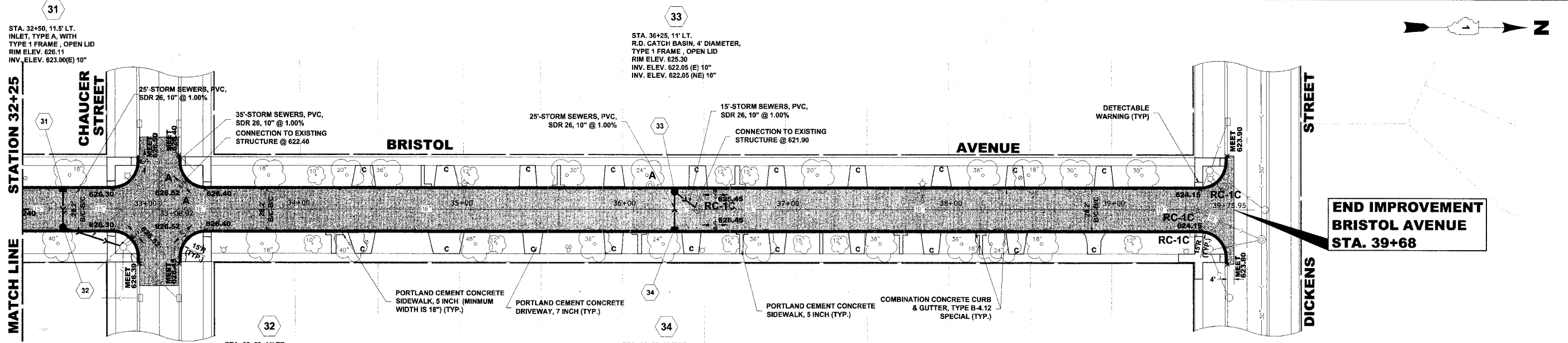
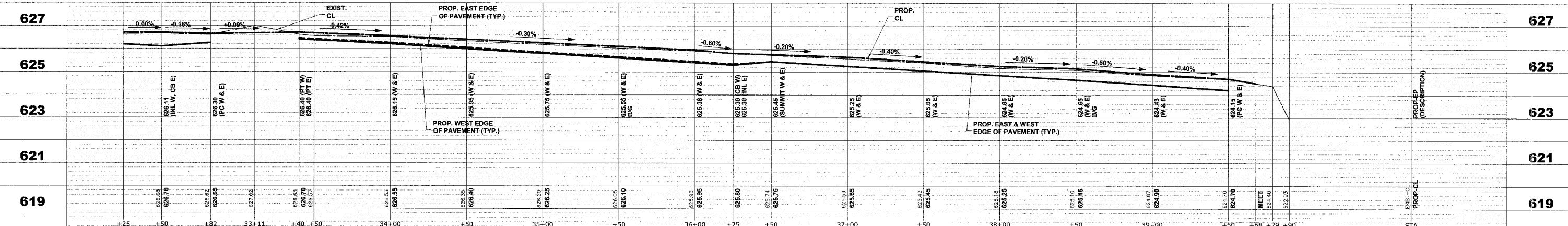


EXISTING TOPOGRAPHY



PROPOSED IMPROVEMENTS



Drawing file: W:\Projects\83983\Bristol And Dover.dwg Oct 03, 2007 - 11:22am

HANCOCK ENGINEERING ♦ Civil Engineers ♦ Municipal Consultants ♦ Established 1911

9933 Roosevelt Road
Westchester, Illinois 60154-2780
Phone: 708/865-0300 Fax: 708/865-1122

HIGH PRIORITY PROJECT HPP-2902 (002)
BRISTOL AVENUE & DOVER STREET
VILLAGE OF WESTCHESTER, ILLINOIS

BRISTOL AVENUE
PLAN & PROFILE

SCALE: 1"=30'H. & 1"=2'V.	SHEET 13
DRAWN BY: ECW/LEV	22
BOOK NO.: 1541	
DATE: 10-2-07	
E.H.E. NO.: 838-06-38501	