

F.A.U. RTE NO.	SECTION	COUNTY	TOTAL SHEETS	SHEET NO.
3783	00-00080-00-FP	COOK	49	1
FED. ROAD DIST. NO.		ILLINOIS	FED. AID PROJECT	
CONTRACT NO: 83988				

FOR INDEX OF SHEETS, SEE SHEET NO. 2

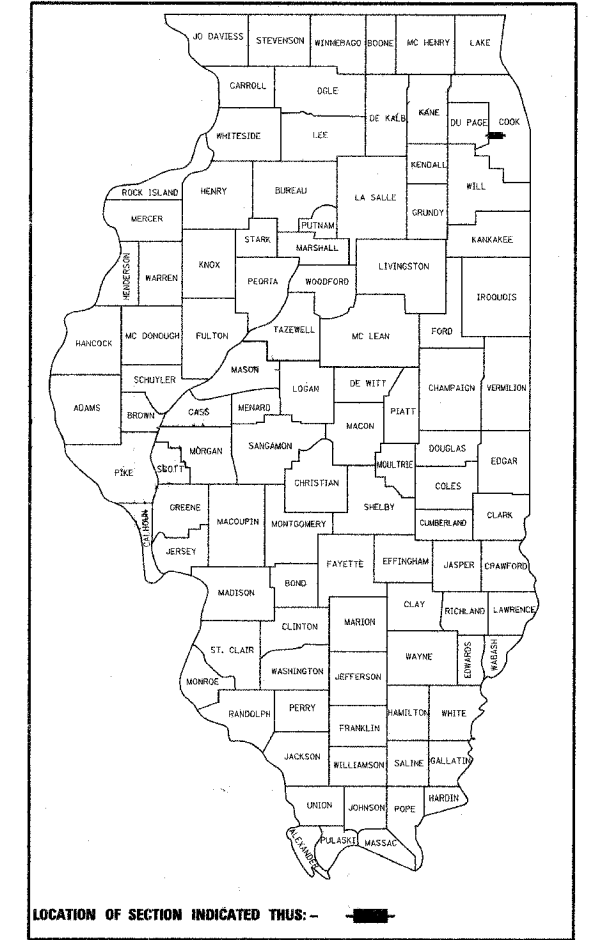
STATE OF ILLINOIS  
DEPARTMENT OF TRANSPORTATION  
DIVISION OF HIGHWAYS

PLANS FOR PROPOSED  
FEDERAL AID HIGHWAY

F.A.U. ROUTE 3783 (BURLINGTON AVE.)  
WOLF RD. (F.A.U. 2689) TO GILBERT AVE. (F.A.U. 2697)

SECTION: 00-00080-00-FP  
ROADWAY RECONSTRUCTION

PROJECT: M-8003(333)  
VILLAGE OF WESTERN SPRINGS  
COOK COUNTY  
C-91-053-04



LOCATION OF SECTION INDICATED THUS: -

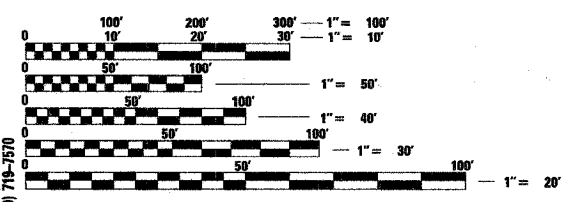
TRAFFIC DATA  
ADT:

BURLINGTON AVE. = 3250 (2025)

SPEED LIMIT:

BURLINGTON AVE. = 20 MPH (POSTED)  
30 MPH (DESIGN)

PROJECT LOCATED IN  
VILLAGE OF WESTERN SPRINGS

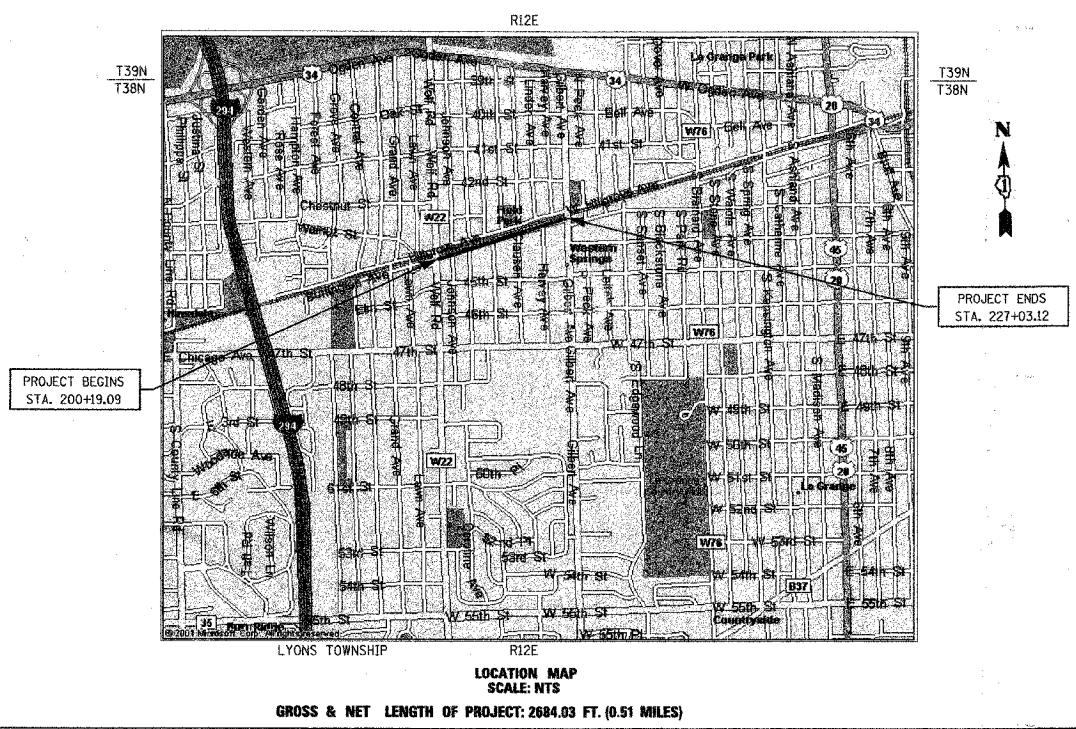


FULL SIZE PLANS HAVE BEEN PREPARED USING STANDARD ENGINEERING SCALES. REDUCED SIZED PLANS WILL NOT CONFORM TO STANDARD SCALES. IN MAKING MEASUREMENTS ON REDUCED PLANS, THE ABOVE SCALES MAY BE USED.

J.U.L.I.E.  
JOINT UTILITY LOCATION INFORMATION FOR EXCAVATION  
1-800-892-0123

CONTRACT NO. 83988  
DESIGN DESIGNATION: COLLECTOR

ASSOCIATE FIELD ENGINEER: JESSICA FELICIANO (847) 705-4487  
CONSULTANT: JAMES J. BENES & ASSOCIATES, INC. (630) 719-7570



LOCATION MAP  
SCALE: NTS  
GROSS & NET LENGTH OF PROJECT: 2684.03 FT. (0.51 MILES)

AGENCY RESPONSIBLE FOR LETTING

Approved: *William M. White*  
9.27.07  
Village of Western Springs, Director of Municipal Services

Passed: *Christopher J. ...*  
NOVEMBER 6, 2007  
District #1 Engineer of Local Roads & Streets

Releasing for Bid  
Based on Limited  
Review: *Biane O. Kapelewa*  
Nov. 7, 2007  
Deputy Director Of Highways, Region #1 Engineer

PRINTED BY AUTHORITY OF THE STATE OF ILLINOIS

**JJB** JAMES J. BENES & ASSOCIATES  
CONSULTING ENGINEERS  
950 WARRENVILLE ROAD, SUITE 101  
LISLE, IL 60532  
(630) 719-7570  
SIGNATURE: *James J. Benes*  
DATE: 9/27/07  
IL LICENSE NO: 062-034438  
EXP. DATE: NOVEMBER 30, 2009  
FIELD: JAMES J. BENES AND ASSOCIATES, INC.  
CIVIL ENGINEERING  
(SHEETS 1-49)