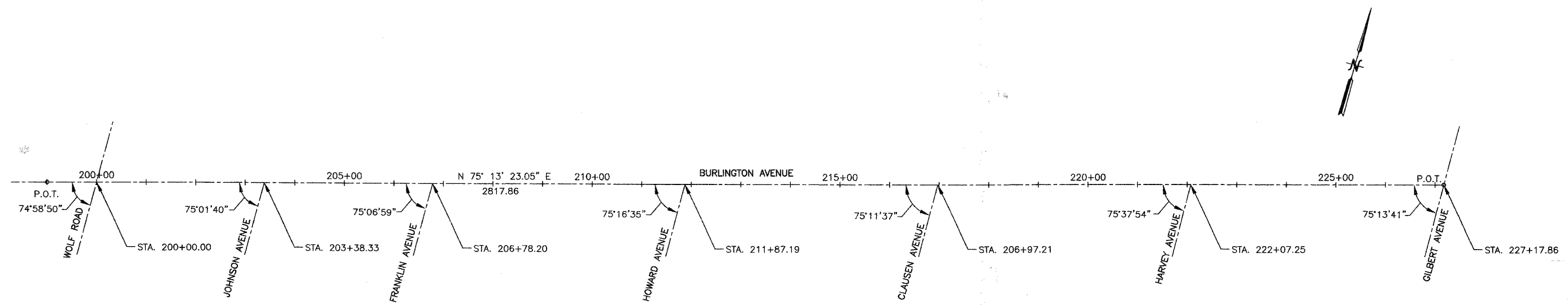


F.A.U. RTE.	SECTION	COUNTY	TOTAL SHEETS	SHEET NO.
3783	00-00080-00-FP	COOK	49	9
STA.		TO STA.		
FED. ROAD DIST. NO.		ILLINOIS FED. AID PROJECT		
CONTRACT NO: 83988				



CONTROL POINTS						
CONTROL POINT NO.	LOCATION		NORTHING	EASTING	ELEVATION	DESCRIPTION
	STATION	OFFSET				
44	202+09.38	26.95 R	9118.8697	17551.7251	669.54	CUT CROSS
50	207+03.47	28.73 R	9243.1768	18029.9296	668.65	CUT CROSS
43	208+86.90	26.67 R	9291.9486	18206.7653	668.11	CUT CROSS
46	209+34.26	20.98 L	9350.0986	18240.4083	666.57	PK NAIL
47	212+14.44	28.03 R	9374.1770	18523.8210	665.15	CUT CROSS
42	212+97.21	16.59 L	9438.4304	18592.4712	664.61	PK NAIL
41	216+58.93	32.24 R	9483.4687	18954.6784	655.13	CUT CROSS
80	218+88.20	27.39 R	9546.6391	19175.1323	656.28	CUT CROSS
81	221+68.74	31.78 R	9613.9540	19447.5130	659.02	CUT CROSS
82	224+23.76	27.73 R	9682.9068	19693.0624	657.92	CUT CROSS
83	225+69.87	28.33 R	9719.5951	19834.4949	658.75	CUT CROSS
84	226+79.27	29.58 R	9746.2886	19940.6010	658.97	CUT CROSS

CURVE NO.	Δ	D <sub>a</sub>	T	R	L	E	POT/PI STATION	POT/PI COORDINATES		PC STATION	PC COORDINATES		PT STATION	PT COORDINATES	
								NORTHING	EASTING		NORTHING	EASTING		NORTHING	EASTING
BURLINGTON AVENUE							199+00.00 227+17.86	9066.0215 9784.7342	17245.7029 19970.3630						

- BURLINGTON AVENUE BENCH MARKS**
- BM#1: TOP BOLT (NOT OPERATING NUT) ON FIRE HYDRANT, FIRE HYDRANT AT THE NORTHEAST CORNER OF WOLF ROAD AND BURLINGTON AVENUE. ELEVATION=673.60
  - \*BM#2: NORTHWEST FLANGE BOLT ON FIRE HYDRANT, FIRE HYDRANT AT THE SOUTHWEST CORNER OF JOHNSON AVENUE AND BURLINGTON AVENUE. ELEVATION=670.22
  - \*BM#3: NORTHWEST FLANGE BOLT ON FIRE HYDRANT, FIRE HYDRANT AT THE SOUTHWEST CORNER OF FRANKLIN AVENUE AND BURLINGTON AVENUE. ELEVATION=667.72
  - BM#4: NORTHWEST FLANGE BOLT ON FIRE HYDRANT, FIRE HYDRANT AT THE SOUTHWEST CORNER OF HOWARD AVENUE AND BURLINGTON AVENUE. ELEVATION=667.08
  - \*BM#5: NORTHWEST FLANGE BOLT ON FIRE HYDRANT, FIRE HYDRANT AT THE SOUTHWEST CORNER OF CLAUSEN AVENUE AND BURLINGTON AVENUE. ELEVATION=660.41
  - \*BM#6: NORTHWEST FLANGE BOLT ON FIRE HYDRANT, FIRE HYDRANT AT THE SOUTHWEST CORNER OF HARVEY AVENUE AND BURLINGTON AVENUE. ELEVATION=656.14
  - BM#6: NORTHWEST FLANGE BOLT ON FIRE HYDRANT, FIRE HYDRANT ON THE EAST SIDE OF GILBERT AVENUE AT THE INTERSECTION WITH BURLINGTON AVENUE. ELEVATION=662.15
- \*NOTES: BENCH MARK IS LOCATED ON A FIRE HYDRANT THAT WILL BE MOVED. BENCH MARK WILL NEED TO BE RELOCATED PRIOR TO CONSTRUCTION.

REVISIONS	
NAME	DATE

ILLINOIS DEPARTMENT OF TRANSPORTATION  
F.A.U. 3783  
BURLINGTON AVENUE

ALIGNMENT AND BENCH MARKS

SCALE: 1"=100'  
DATE: 8/15/07

DRAWN BY SMP  
CHECKED BY BDH