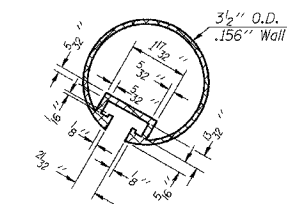
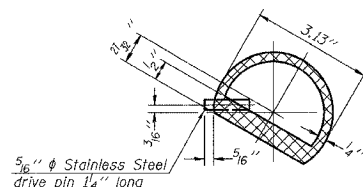


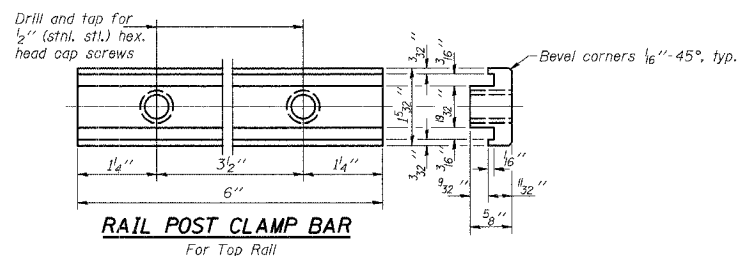
| RTE. | SECTION | COUNTY | TOTAL SHEETS | SHEET NO. |
|------------|----------------|--------------|--------------|-----------|
| 9th | 05-00142-00-BR | COLES | 16 | 9 |
| STA. 14+00 | | TO STA.15+80 | | |



SECTION THRU TOP RAIL

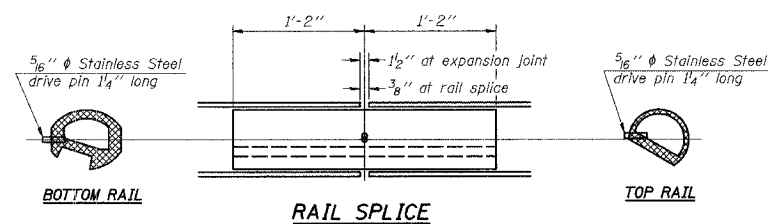


SECTION THRU SPLICE
For Top Rail



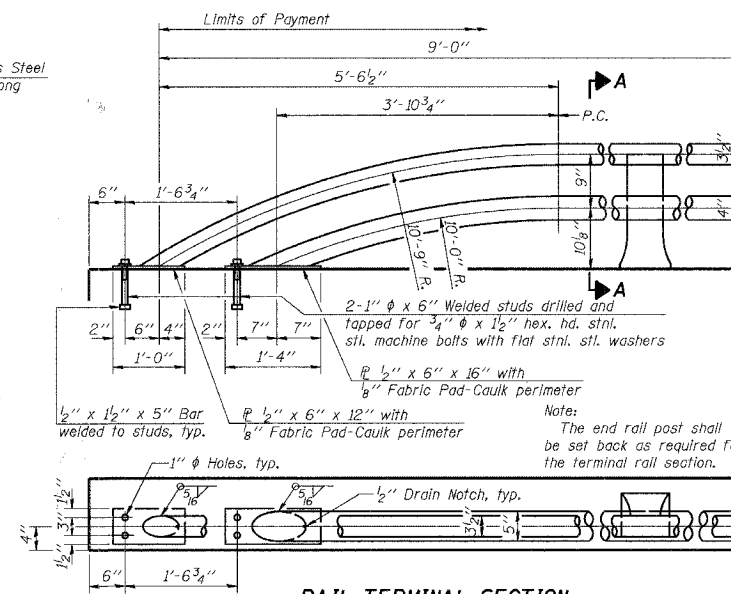
RAIL POST CLAMP BAR

For Top Rail

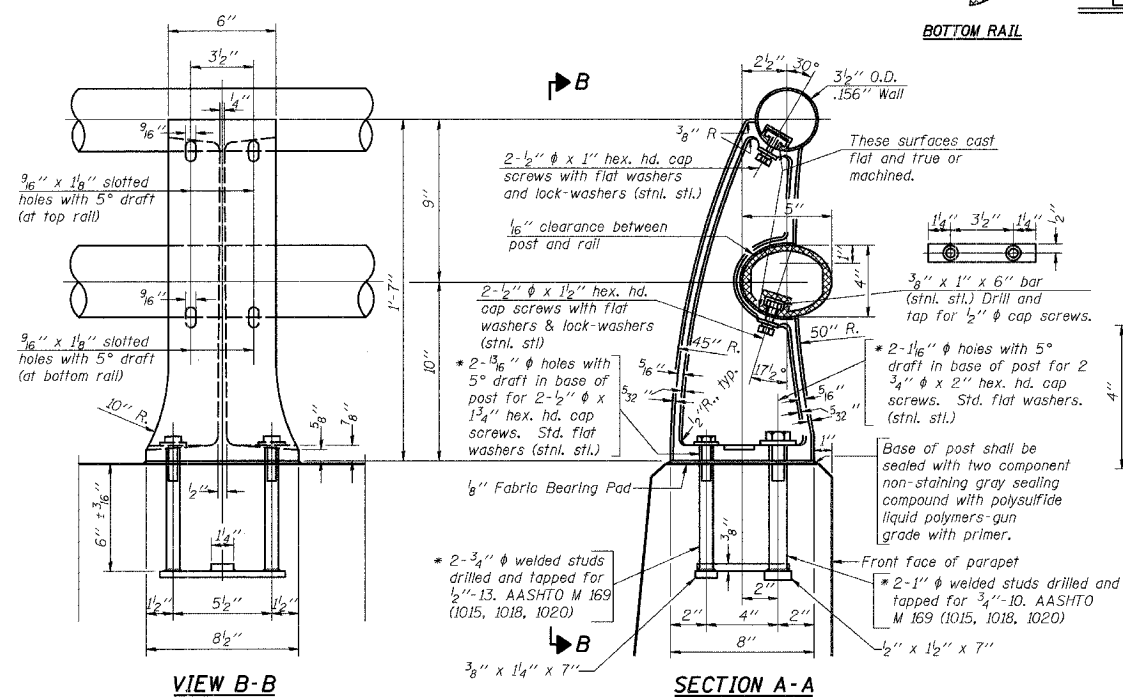


RAIL SPLICE

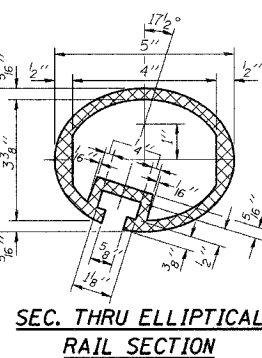
Notes:
 All Posts shall be normal to parapet.
 All Aluminum Alloy Extruded Rail shall be supplied in modular lengths of 30 feet, except at the end of bridge or over open joints in bridge deck where the rail shall be attached to a minimum of 2 posts. If the rail is on a horizontal curve of 2300 Foot radius or less, the modular lengths may be reduced but shall be attached to a minimum of 2 posts.
 All joints in rail shall be spliced per detail.
 Provide 1-1/2" and 2-1/16" Aluminum Shims for 25% of the Posts.
 Rail elements shall be parallel to Grade-high spots will be ground and low spots shimmed.
 Railing shall be according to Section 509 of the Standard Specifications, except as noted, and will be paid for at the contract unit price per foot for ALUMINUM RAILING, TYPE L.
 Aluminum alloy rail shall conform to ASTM B 221 alloy 6061-T6 or 6351-T5 with min. yield 35 ksi, min. tensile 38 ksi, and elongation of 10% in 2 inches.



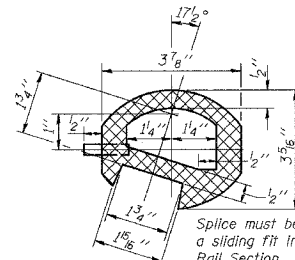
RAIL TERMINAL SECTION



RAIL POST DETAILS



SEC. THRU ELLIPTICAL RAIL SECTION



SEC. THRU SPLICE

BILL OF MATERIAL

| Item | Unit | Quantity |
|--------------------------|------|----------|
| Aluminum Railing, Type L | Foot | 151 |

TYPE L ALUMINUM RAILING

| REVISIONS | |
|-----------|------|
| NAME | DATE |
| | |
| | |
| | |
| | |
| | |
| | |
| | |

ILLINOIS DEPARTMENT OF TRANSPORTATION
 TYPE L ALUMINUM RAILING
 9th St. Over Kickapoo Creek
 SECTION 05-00142-00-BR
 CITY OF MATTOON STA. 14+95
 STRUCTURE NO. 015-6339

SCALE: N.T.S. DRAWN BY
 DATE CHECKED BY