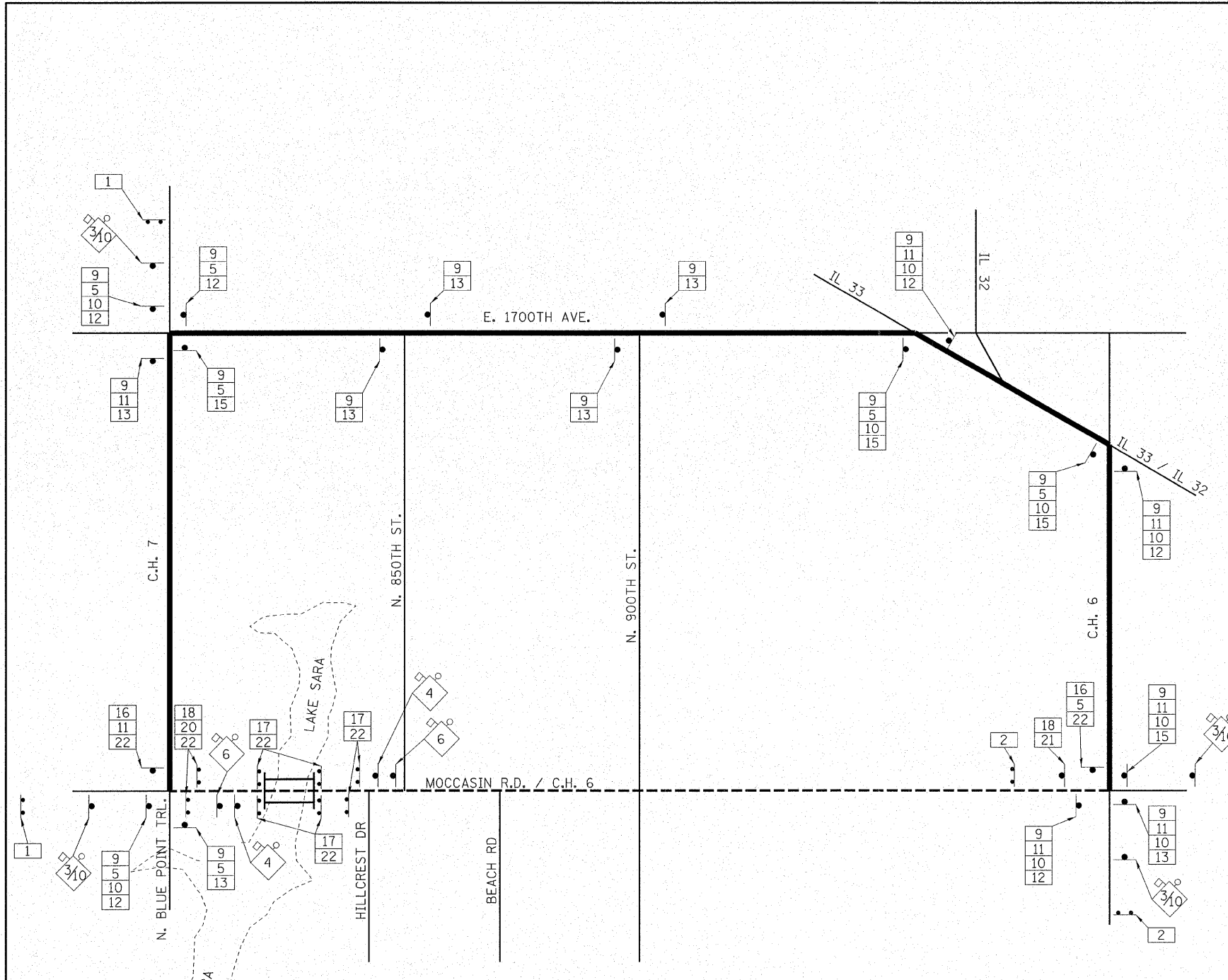


ROUTE NO.	SECTION	COUNTY	TOTAL SHEETS	SHEET NO.
F.A.S. 1706	00-00080-00-BR	EFFINGHAM	17	5
FED. ROAD DIST. NO.	ILLINOIS	CONTRACT NO. 95524		

SIGN LEGEND

①		R11-3 WITH 2 AMBER FLASHING LIGHTS. (2 REQ'D)	⑪		M3-1 24"x12" (7 REQ'D)
②		R11-3 WITH 2 AMBER FLASHING LIGHTS. (3 REQ'D)	⑫		M6-1 21"x15" (6 REQ'D)
			⑬		M6-3 21"x15" (7 REQ'D)
③		W20-2, 48" x 48" WITH AMBER FLASHING LIGHT AND FLAG. (4 REQ'D)	⑮		M6-1 21"x15" (4 REQ'D)
④		W20-3, 48" x 48" WITH AMBER FLASHING LIGHT AND FLAG. (2 REQ'D)	⑯		M4-8A 24"x48" (2 REQ'D)
⑤		M3-3 24"x12" (8 REQ'D)	⑰		R11-2 48"x30" (6 REQ'D)
⑥		W20-3, 48" x 48" WITH AMBER FLASHING LIGHT AND FLAG. (2 REQ'D)	⑱		R11-3 60"x30" (1 REQ'D)
⑨		M4-8 24"x12" (17 REQ'D)	⑳		M4-10L 48"x18" (2 REQ'D)
⑩		M1-1100 24"x12" (13 REQ'D)	㉑		M4-10R 48"x18" (1 REQ'D)
			㉒		TYPE III BARRICADES WITH TWO FLASHING LIGHTS EACH. (10 REQ'D) STD 702001



AREA PLAN

SPECIAL DETOUR NOTES

1. THE CONTRACTOR SHALL PAY PARTICULAR ATTENTION TO THE DETOUR GENERAL NOTES.
2. TEN (10) TYPE III BARRICADES WILL BE NEEDED FOR THIS DETOUR AND ROAD CLOSURE.
3. THE TOTAL LENGTH OF THE DETOUR IS 4.6 MILES.
4. ALL DETOUR SIGNS, SHALL BE COMPLETELY COVERED AT ALL TIMES THE ROADWAY IS NOT CLOSED TO TRAFFIC.

LEGEND

- OPEN ROAD
- DETOUR ROUTE
- - - ROAD OPEN TO LOCAL TRAFFIC ONLY
- 48" x 48" CONSTRUCTION SIGN, WITH AMBER FLASHING LIGHT AND ORANGE WARNING FLAG (OPTIONAL) NUMBER DENOTES SIGN TYPE
- SERIES OF DETOUR SIGNS WITH DIRECTION AND ROAD NAME PLATES NUMBER DENOTES TYPE
- SINGLE DETOUR SIGNS, NUMBER DENOTES TYPE



HAMPTON, LENZINI & RENWICK, INC.
 CIVIL & STRUCTURAL ENGINEERS
 LAND SURVEYORS
 3085 STEVENSON DRIVE, SUITE 201
 SPRINGFIELD, ILLINOIS 62703
 (217) 546-3400
 ELGIN • SPRINGFIELD
 PROJECT NUMBER: 12-33-0004-1 DATE: 11/07/07
 DESIGNED: R.J.P. CHECKED: S.W.M. DRAWN: D.B.

DETOUR PLAN
 F.A.S. 1706 / C.H. 6 OVER LAKE SARA
 SECTION 00-00080-00-BR
 EFFINGHAM COUNTY