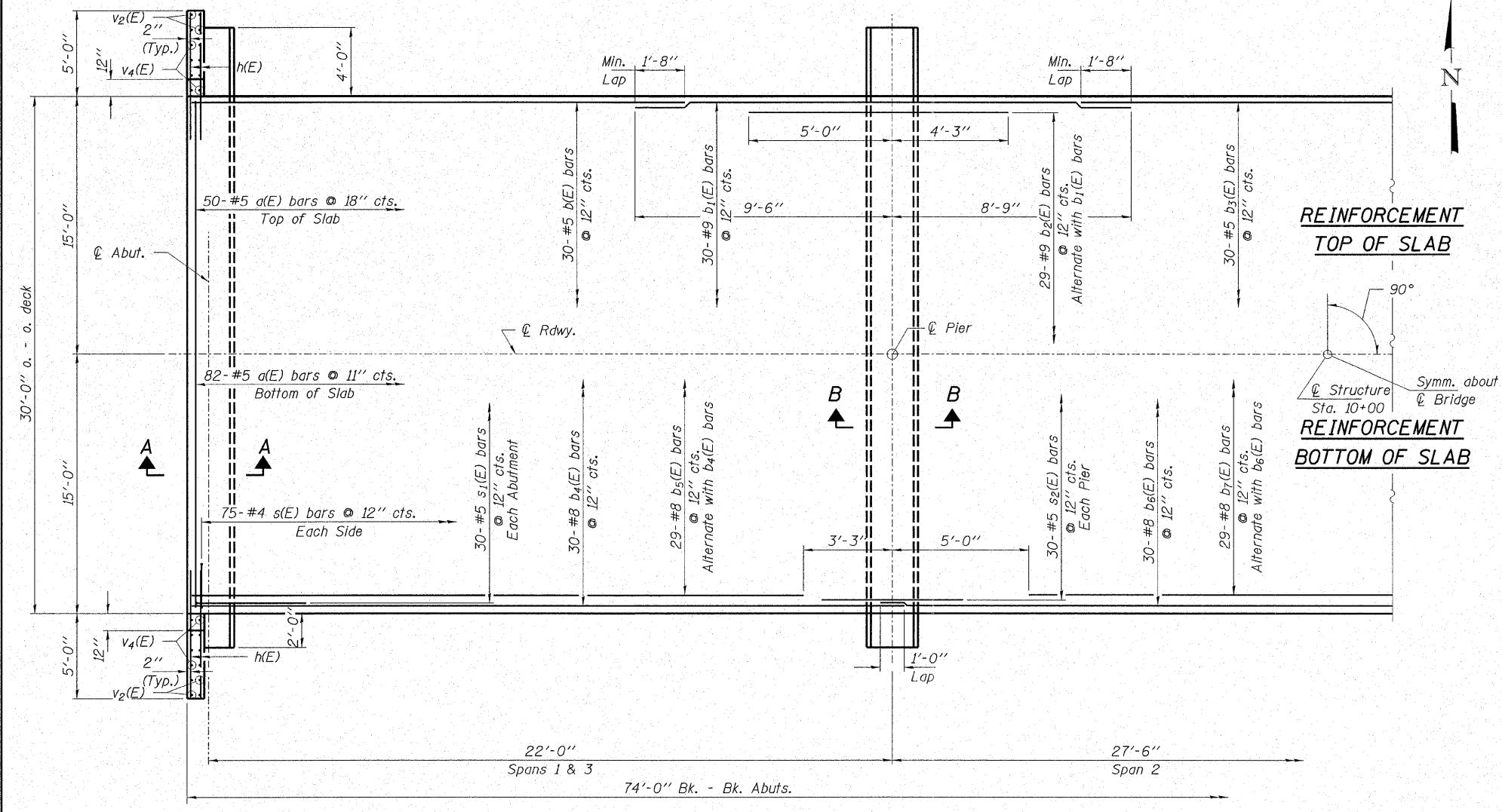
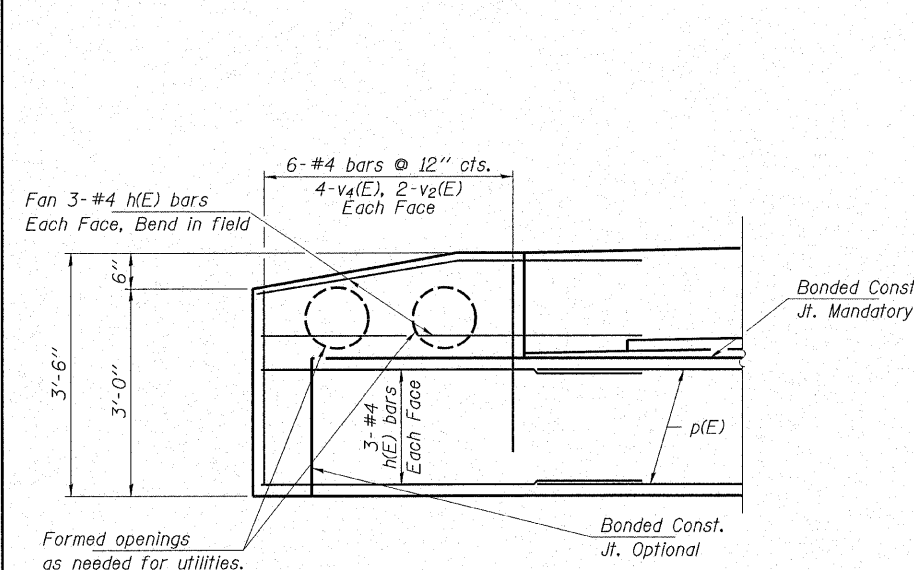


ROUTE NO.	SECTION	COUNTY	TOTAL SHEETS	SHEET NO.
F.A.S. 1706	00-00080-00-BR	EFFINGHAM	17	13
FED. ROAD DIST. NO.	ILLINOIS	CONTRACT NO. 95524		

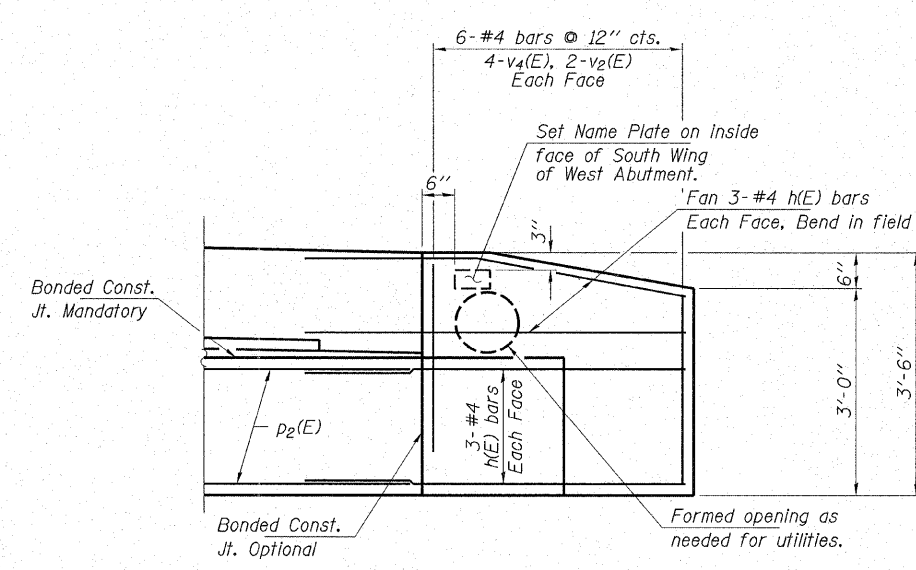
Notes:
 See Sheet 14 for Superstructure Details.
 Reinforcement bars designated (E) shall be epoxy coated.
 For Elevations, Sections A-A, and B-B see sheet 14.



HALF PLAN



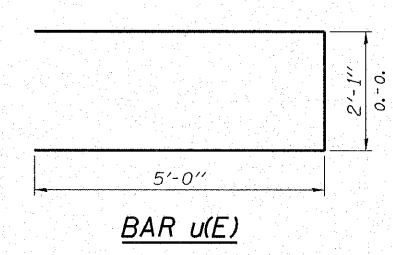
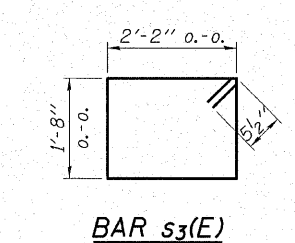
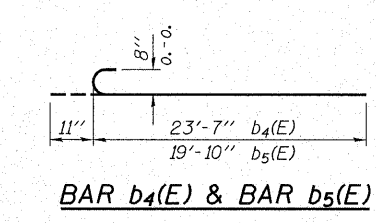
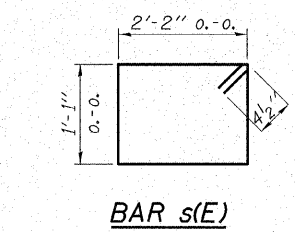
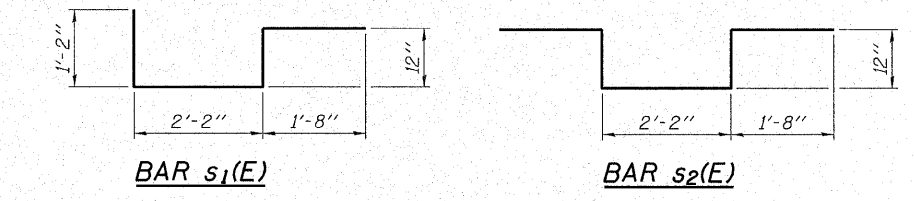
DETAIL - NORTH WINGWALLS
(Looking East)



DETAIL - SOUTH WINGWALLS
(Looking East)

REINFORCEMENT
TOP OF SLAB

REINFORCEMENT
BOTTOM OF SLAB



BILL OF MATERIAL				
BAR	NO.	SIZE	LENGTH	SHAPE
a(E)	132	#5	29'-8"	—
b(E)	60	#5	15'-3"	—
b1(E)	60	#9	18'-3"	—
b2(E)	58	#9	9'-3"	—
b3(E)	30	#5	13'-4"	—
b4(E)	60	#8	24'-6"	—
b5(E)	58	#8	20'-9"	—
b6(E)	30	#8	28'-6"	—
b7(E)	29	#8	17'-6"	—
h(E)	48	#4	6'-0"	—
p(E)	20	#7	28'-8"	—
p1(E)	20	#8	28'-8"	—
p2(E)	20	#7	6'-8"	—
p3(E)	20	#8	6'-8"	—
s(E)	150	#4	7'-3"	—
s1(E)	60	#5	6'-0"	—
s2(E)	60	#5	7'-6"	—
s3(E)	148	#5	8'-7"	—
u(E)	24	#6	12'-1"	—
v2(E)	16	#4	3'-3"	—
v3(E)	240	#5	3'-2"	—
v4(E)	32	#4	2'-9"	—
Concrete Structures			Cu. Yd.	29.1
Concrete Superstructure			Cu. Yd.	93.1
Bridge Deck Grooving			Sq. Yd.	247
Concrete Encasement			Cu. Yd.	25.8
Protective Coat			Sq. Yd.	290
Reinforcement Bars, Epoxy Coated			Pound	29,520
Bar Splacers			Each	40
Steel Piles HPI0x42			Foot	820
Test Pile Steel HPI0x42			Each	2
Name Plates			Each	1

HAMPTON, LENZINI & RENWICK, INC.
 CIVIL & STRUCTURAL ENGINEERS
 LAND SURVEYORS

3085 STEVENSON DRIVE, SUITE 201
 SPRINGFIELD, ILLINOIS 62703
 (217) 546-3400

ELGIN • SPRINGFIELD

PROJECT NUMBER: 12-33-0004-1 DATE: 11/07/07
 DESIGNED: R.J.P. CHECKED: S.W.M. DRAWN: D.A.B.

SUPERSTRUCTURE
 F.A.S. 1706 / C.H. 6 OVER LAKE SARA
 SECTION 00-00080-00-BR
 EFFINGHAM COUNTY
 STRUCTURE NO. 025-3222 / STATION 10+00